

Copyright FCI

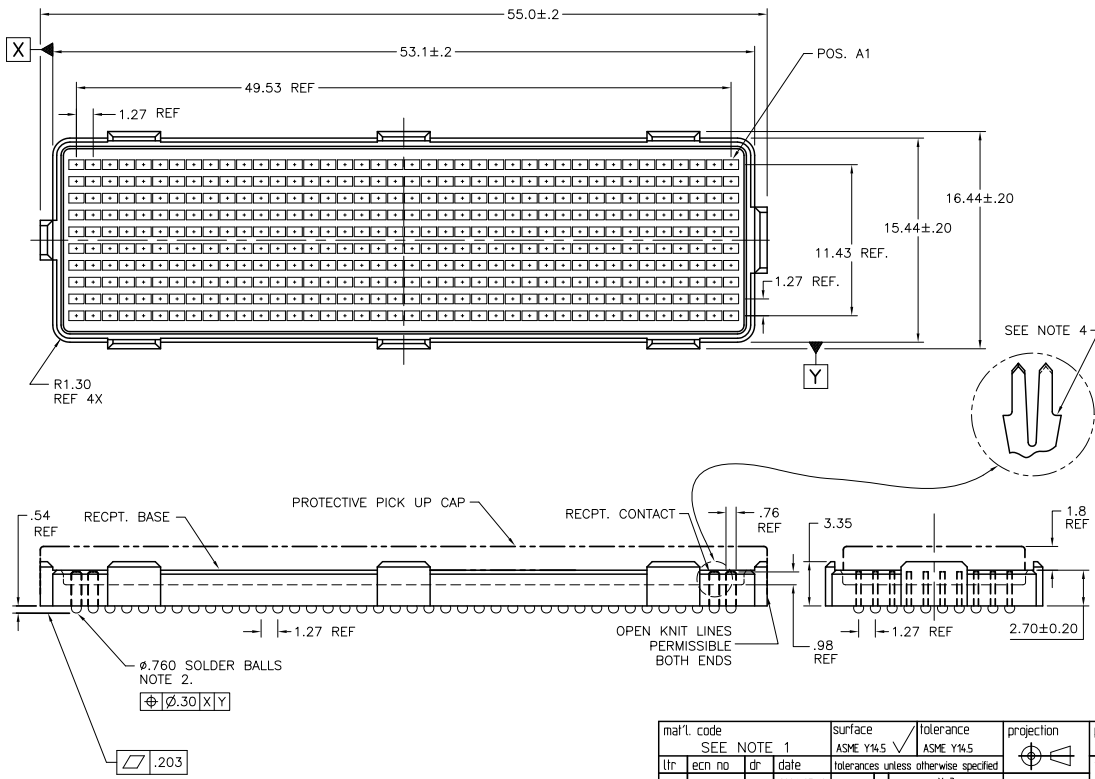


1 2

3

4

PRODUCT NUMBER  
SEE TABLE-SHEET 3



|             |            |         |            |                                       |                         |
|-------------|------------|---------|------------|---------------------------------------|-------------------------|
| mat'l. code | SEE NOTE 1 | surface | tolerance  | projection                            | product family          |
| l/r         | ec'n no    | dr      | date       | ASME Y14.5 ✓<br>ASME Y14.5            | MEG-ARRAY               |
| N           | v06-0560   | LP      | 2006-07-18 | tolerances unless otherwise specified | title                   |
| P           | v-004083   | HTB     | 2011-06-19 | angles<br>X=3<br>XX=19                | 4mm RECEPTACLE ASSEMBLY |
| -           | -          | -       | -          | 0° ±2'<br>XXX=051                     | 10 X 40 = 400 POSITIONS |
| J           | v20006     | DRW     | 2002-01-03 | dr                                    | D. WAUGHEN              |
| K           | v03-0679   | DAI     | 2003-06-19 | eng'r                                 | T. LEMKE                |
| L           | v04-0940   | VS      | 2004-10-18 | chr                                   | T. LEMKE                |
| M           | v05-1071   | DAI     | 2005-12-21 | app'd                                 | T. LEMKE                |
| sheet       | revision   | P       | P          | P                                     | P                       |
| index       | sheet      | 1       | 2          | 3                                     | 4                       |



form A4mmXLc

1

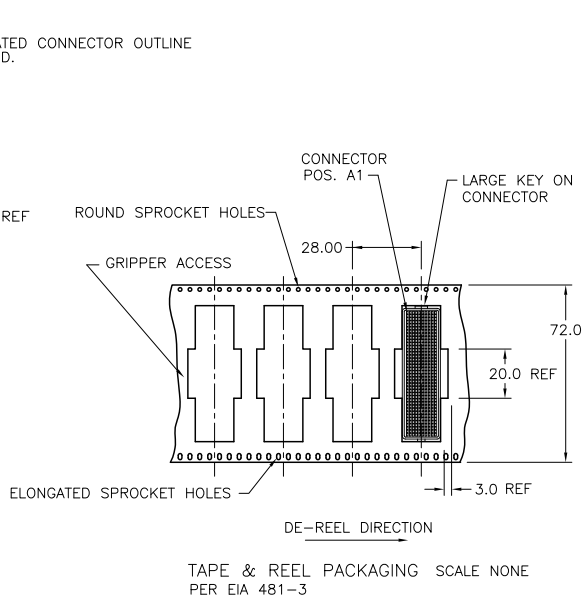
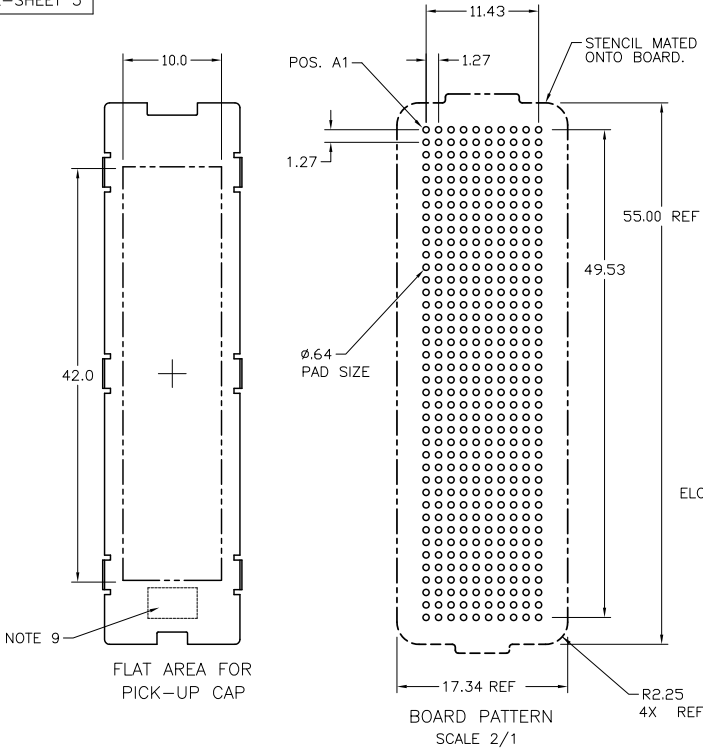
2

3

4

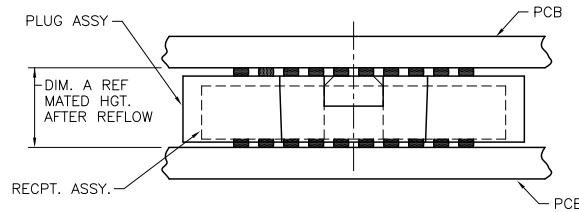
PDS: Rev :P STATUS:Released Printed: Jun 15, 2011

PRODUCT NUMBER  
SEE TABLE-SHEET 3



|             |                |         |              |                                       |            |            |                         |                         |
|-------------|----------------|---------|--------------|---------------------------------------|------------|------------|-------------------------|-------------------------|
| mat'l. code | SEE NOTE 1     | surface | ASME Y14.5 ✓ | tolerance                             | ASME Y14.5 | projection | product family          | MEG-ARRAY               |
| lfr         | ecm no         | dr      | date         | tolerances unless otherwise specified |            | MM         | title                   | 4mm RECEPTACLE ASSEMBLY |
| P           |                |         |              | angles                                | X=3        | MM         | 10 x 40 = 400 POSITIONS |                         |
|             |                |         |              | 0° ±2'                                | XX=13      | scale 2:1  | dwg no                  | 74221                   |
|             |                |         |              |                                       | XXX=051    | FCI        | sheet 2 of 4            | A4                      |
|             |                | dr      | D. WAUGHEN   | 1997-11-26                            |            |            | type                    | CUSTOMER Drawing        |
|             |                | engr    | T. LEMKE     | 1997-11-26                            |            |            |                         |                         |
|             |                | chr     | T. LEMKE     | 1997-11-26                            |            |            |                         |                         |
|             |                | appd    | T. LEMKE     | 1997-11-26                            |            |            |                         |                         |
| sheet index | revision sheet |         |              |                                       |            |            |                         |                         |

| PRODUCT NUMBER | PICK-UP CAP | CONTACT PLATING                   | SOLDER BALL      | NOTES |
|----------------|-------------|-----------------------------------|------------------|-------|
| 74221-001      | YES         | 15μ" (.38μm) Au OVER Ni           | SnPb             |       |
| 74221-001LF    |             |                                   | SnAgCu LEAD FREE | 6 & 7 |
| 74221-101      | YES         | 30μ" (.76μm) Au OVER Ni           | SnPb             |       |
| 74221-101LF    |             |                                   | SnAgCu LEAD FREE | 6 & 7 |
| 74221-201      | YES         | SEE NOTE 5                        | SnPb             |       |
| 74221-201LF    |             |                                   | SnAgCu LEAD FREE | 6 & 7 |
| 74221-A01      | YES         | 30μ" (.76μm) Au OVER Ni<br>NOTE 8 | SnPb             |       |
| 74221-A01LF    |             |                                   | SnAgCu LEAD FREE | 6 & 7 |



| DIM. A | PLUG ASSY P/N | RECPT. ASSY P/N |
|--------|---------------|-----------------|
| 4.0    | 84740         | 74221           |
| 10.0   | 84520         | 74221           |

MATED HEIGHT AFTER REFLOW IS BASED ON ø .64mm PAD (METAL-DEFINED) AND .13mm SOLDER PASTE STENCIL THICKNESS. SEE NOTE 3.



END VIEW - MATED CONNECTORS SCALE NONE

|             |                |         |              |                                       |            |            |                |                         |
|-------------|----------------|---------|--------------|---------------------------------------|------------|------------|----------------|-------------------------|
| mat'l. code | SEE NOTE 1     | surface | ASME Y14.5 ✓ | tolerance                             | ASME Y14.5 | projection | product family | MEG-ARRAY               |
| lfr         | ecn no         | dr      | date         | tolerances unless otherwise specified | angles     | MM         | title          | 4mm RECEPTACLE ASSEMBLY |
| P           |                |         |              | 0° ±2'                                | XXx-13     | scale 2:1  | dwg no         | 10 x 40 = 400 POSITIONS |
|             |                |         |              | XXXx-051                              | XXx-19     |            | sheet          | 3 of 4                  |
|             |                | dr      | D. WAUGHEN   | 1997-11-26                            |            |            | size           | A4                      |
|             |                | engr    | T. LEMKE     | 1997-11-26                            |            |            | type           | CUSTOMER Drawing        |
|             |                | chr     | T. LEMKE     | 1997-11-26                            |            |            |                |                         |
|             |                | appd    | T. LEMKE     | 1997-11-26                            |            |            |                |                         |
| sheet index | revision sheet |         |              |                                       |            |            |                |                         |

PRODUCT NUMBER  
SEE TABLE-SHEET 3

NOTES:

- ① MATERIAL:  
HOUSING: LCP  
CONTACT: COPPER ALLOY  
  
PLATING  
CONTACT: (SEE TABLE ON SHEET 3)  
SOLDER BALL: (SEE TABLE ON SHEET 3)  
EUTECTIC SnPb OR LEAD FREE  
95.5Sn/4Ag/0.5Cu
- ② SOLDER BALLS WILL NOT BE PERFECT SPHERICAL SHAPE DUE TO REFLOW ATTACHMENT.
- ③ MATED HEIGHT EFFECTED BY CUSTOMER'S PCB PAD SIZE, PLATING, SOLDER REFLOW PROFILE, & SOLDER PASTE.
- ④ NO TIN\LEAD OR FLUX ABOVE TERMINAL SHOULDER.
- ⑤ PLATING FOR -2XX SERIES DASH NOS. MEETS THE REQUIREMENTS OF NORTEL NPS25298-2 (CENTRAL OFFICE ENVIRONMENT, 25 YEAR LIFE EXPECTANCY).
- ⑥ FOR PROPER APPLICATION FOLLOW FCI APPLICATION SPECIFICATION GS-20-033 LEAD FREE SOLDER BALLS WILL NOT SOLDER PROPERLY IN A LEADED SOLDER PROCESS DUE TO A HIGHER REFLOW TEMPERATURE. LEAD FREE PRODUCT IS THERFORE NOT BACKWARDS COMPATIBLE WITH LEADED OR SOME SOLDERING APPLICATIONS. REFERENCE FCI APPLICATION SPECIFICATION.
- ⑦ THIS PRODUCT MEETS EUROPEAN UNION DIRECTIVES AND OTHER COUNTRY REGULATIONS AS DESCRIBED IN GS-22-008 PRODUCT MEETING THIS DIRECTIVE IS IDENTIFIED IN THE LOT CODE NUMBER MARKED ON EACH PART BY HAVING AN "X" IN THE SEVENTH CHARACTER POSITION.
- ⑧ 74221-A01 AND -A01LF ARE CUSTOMER SPECIALS.
- ⑨ CURRENT COMPANY LOGO TO BE VISIBLE IN APPROXIMATE AREA SHOWN.

|             |                |              |              |                                       |   |   |              |                         |                  |
|-------------|----------------|--------------|--------------|---------------------------------------|---|---|--------------|-------------------------|------------------|
| mat'l. code |                | surface      |              | tolerance                             |   | projection  |              | product family          |                  |
| SEE NOTE 1  |                | ASME Y14.5 ✓ |              | ASME Y14.5                            |   |  |              | MEG-ARRAY               |                  |
| ltr         | ec'n no        | dr           | date         | tolerances unless otherwise specified |   | MM  |              | title                   |                  |
| P           |                |              |              | angles                                | X±3   | ←   |              | 4mm RECEPTACLE ASSEMBLY |                  |
|             |                |              |              | fin                                   | XX±.13  | →   |              | 10 x 40 = 400 POSITIONS |                  |
|             |                |              |              | 0° ±2'                                | XXX±.051  | scale 2:1   |              | dwg no                  |                  |
|             |                | dr           | T. BREWBAKER | 2011-06-19                            |  |   | sheet 4 of 4 |                         | size             |
|             |                | engi         | D. HORCHLER  | 2011-06-19                            |   |   | 74221        |                         |                  |
|             |                | chr          | D. HORCHLER  | 2011-06-19                            |   |   | type         |                         | CUSTOMER Drawing |
|             |                | appd         | D. HORCHLER  | 2011-06-19                            |   |   |              |                         |                  |
| sheet index | revision sheet |              |              |                                       |   |   |              |                         |                  |