

FO-55111-A

4

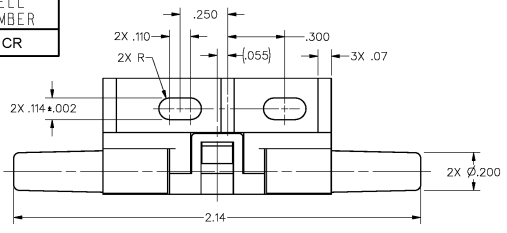
3

2

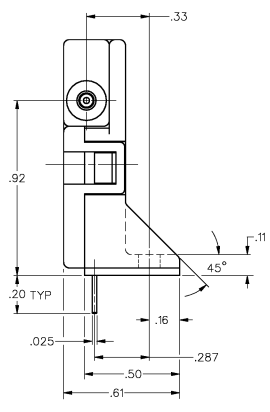
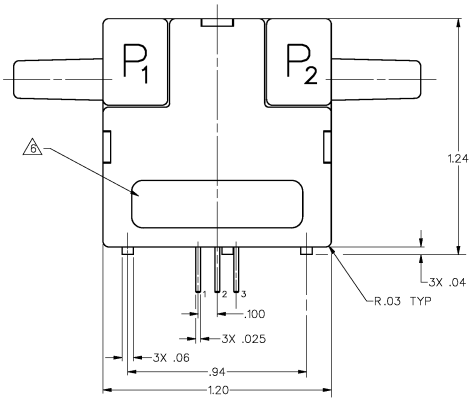
1

HONEYWELL
PART NUMBER
AWM3201CR

REV	DOCUMENT	CHANGED BY	CHECK
4	0013772	RS 16JUNE05	AK



EXCITATION VOLTAGE	10.000 ± .010 VDC
POWER CONSUMPTION	100mW MAX
OUTPUT TYPE	LINEAR, 4-20 mA DC
EXTERNAL OUTPUT LOAD	100-300 OHMS
CALIBRATION GAS	NITROGEN
FLOW RANGE	0-5 IN H ₂ O
OUTPUT @ LASER TRIM POINT	20.0 ± 1.0 mA DC @ .5 IN H ₂ O
NULL OUTPUT	4.0 ± .4 mA DC
NULL OUTPUT SHIFT	±.2 mA DC (MAX)
	-25°C TO +85°C
FULL SCALE OUTPUT SHIFT	+32.0% READING (MAX)
	-25°C TO +25°C
	+25°C TO +85°C
LINEARITY ERROR	±5.0% READING (MAX)
REPEATABILITY AND HYSTERESIS	.5% FSO (MAX)
RESPONSE TIME	60 mSEC (MAX)
OVERPRESSURE	25 PSI (MAX)



OUTPUT CONNECTIONS

- PIN 1 OUTPUT VOLTAGE
- PIN 2 + SUPPLY VOLTAGE (10 VDC)
- PIN 3 GROUND

NOTE
1 - POSITIVE FLOW DIRECTION IS DEFINED AS PROCEEDING FROM P₁ TO P₂ AND RESULTS IN POSITIVE OUTPUT (PIN 1 > PIN 3). NEGATIVE FLOW DIRECTION IS DEFINED CONVERSELY AND RESULTS IN NEGATIVE OUTPUT (PIN 1 < PIN 3).
2 - CONNECT LOAD FROM PIN 1 TO PIN 3
3 - LOAD RANGE (100 OHMS TO 300 OHMS)
4 - OUTPUT RANGE (4-20 mA, 0-.5" H₂O)
5 - SCHEMATIC IS ON (WISS-13647 DRAWING)
6 - LABEL (CATALOG LISTING AND DATE CODE)

DESIGN UNITS: INCH	
TOLERANCES UNLESS NOTED:	
NO PLACE	X ±
ONE PLACE	.X ±
TWO PLACE	.XX ±
THREE PLACE	.XXX ±
FOUR PLACE	.XXXX ±
ANGLES	±

DRAWN	JJA	17NOV95
CHECK	TSM	21NOV95
THIS DRAWING COVERS A PROPRIETARY ITEM AND IS THE PROPERTY OF HONEYWELL. THIS DRAWING IS NOT TO BE COPIED OR USED WITHOUT THE PERMISSION OF HONEYWELL.		
INTERPRET PER ANSI Y14.5M-1982 OTHER HONEYWELL ENGINEERING STANDARDS MAY APPLY		
RASTER		

Honeywell			
TITLE MASS AIRFLOW SENSOR			
SIZE	TYPE	DRAWING NAME	REV
B	I	AWM3201CR	4
SCALE	3:1	SHEET	1 OF 1

4

3

2

1

