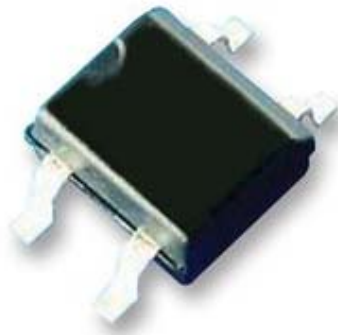


MB Series Bridge Rectifiers



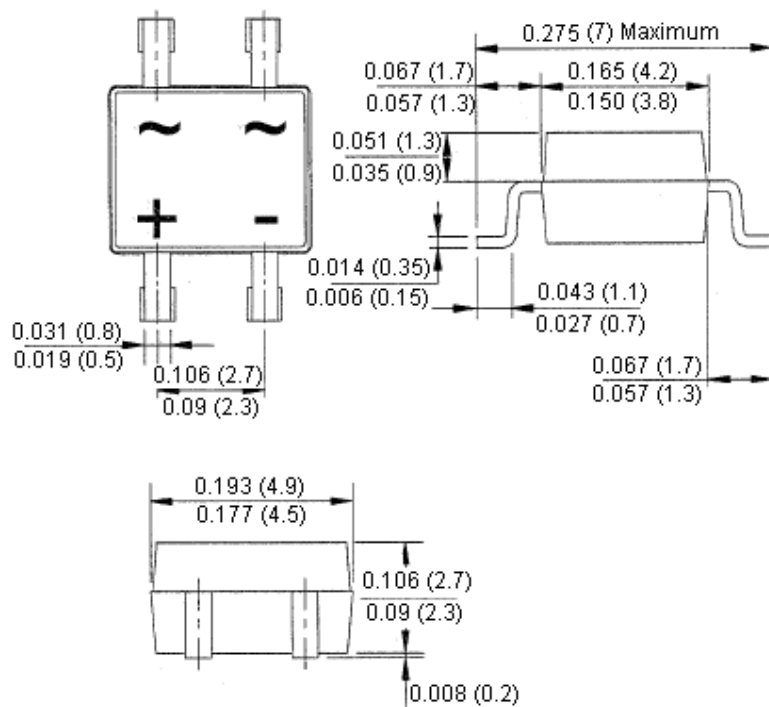
Surface Mount



Features:

- Rating to 1,000 V PRV
- Ideal for printed circuit board
- Lead tin plated copper

Reverse Voltage - 50 to 1,000 Volts
Forward Current - 0.8 Ampere



Dimensions : Inches (Millimetres)

Mechanical Data

Polarity : Symbol moulded on body
Weight : 0.0044 oz, 0.125 g
Mounting position : Any

MB Series Bridge Rectifiers



Surface Mount

Maximum Ratings and Electrical Characteristics

Rating at 25°C ambient temperature unless otherwise specified

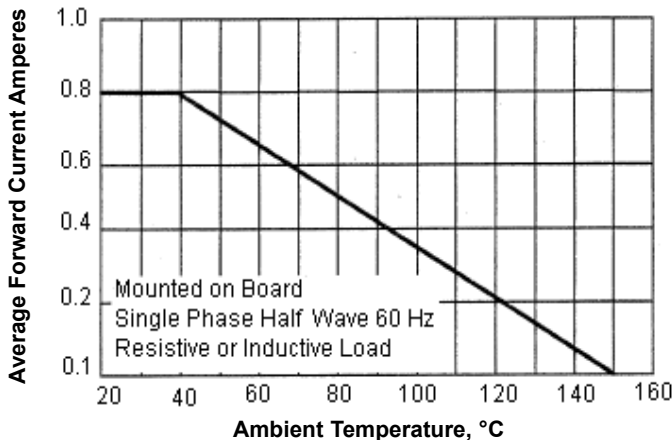
Single phase, half wave, 60 Hz, resistive or inductive load

For capacitive load, derate current by 20%

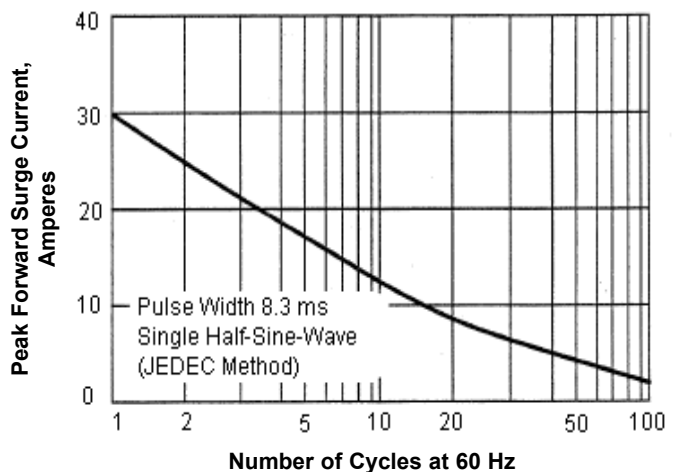
Characteristics	Symbol	MB05S	MB1S	MB2S	MB4S	MB6S	MB8S	MB10S	Unit
Maximum Recurrent Peak Reverse Voltage	V_{RRM}	50	100	200	400	600	800	1,000	V
Maximum RMS Voltage	V_{RMS}	35	70	140	280	420	560	700	
Maximum DC Blocking Voltage	V_{DC}	50	100	200	400	600	800	1,000	
Maximum Average Forward Rectified Current (Note 1) at $T_A = 40^\circ\text{C}$	$I_{(AV)}$	0.8							A
Peak Forward Surge Current 8.3 ms Single Half Sine-wave	I_{FSM}	30							
Peak Forward Voltage at 0.8 A dc	V_F	1.1							V
Maximum DC Reverse Current at $T_J = 25^\circ\text{C}$ at Rated DC Blocking Voltage at $T_J = 125^\circ\text{C}$	I_R	5 500							μA
Typical Junction Capacitance Per Element (Note 2)	C_J	15							pF
Typical Thermal Resistance (Note 3)	$R_{\theta JC}$	75							$^\circ\text{C/W}$
Operating Temperature Range	T_J	-55 to +150							$^\circ\text{C}$
Storage Temperature Range	T_{STG}								

- Notes:**
1. Mounted on P C board
 2. Measured at 1 MHz and applied reverse voltage of 4 V dc
 3. Thermal resistance junction to case

Forward Current Derating Curve



Maximum Non-Repetitive Surge Current

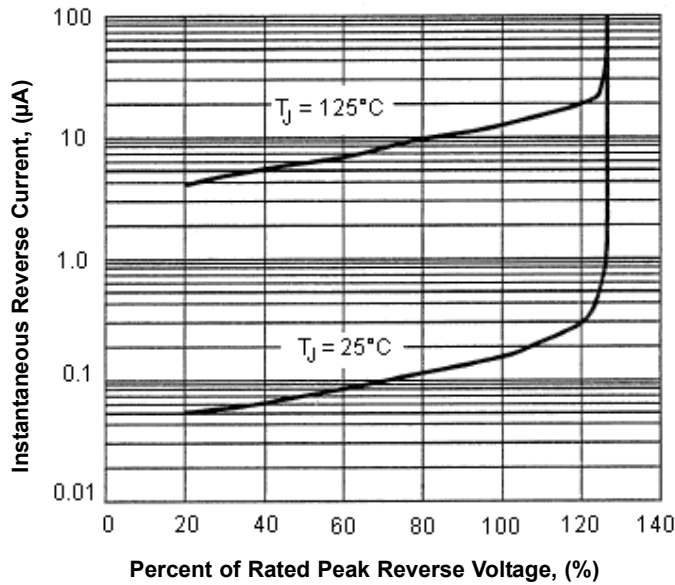


MB Series Bridge Rectifiers

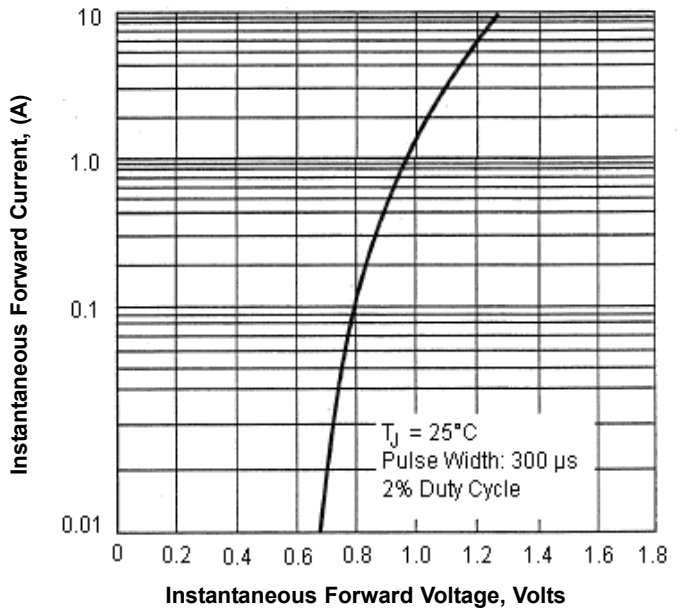


Surface Mount

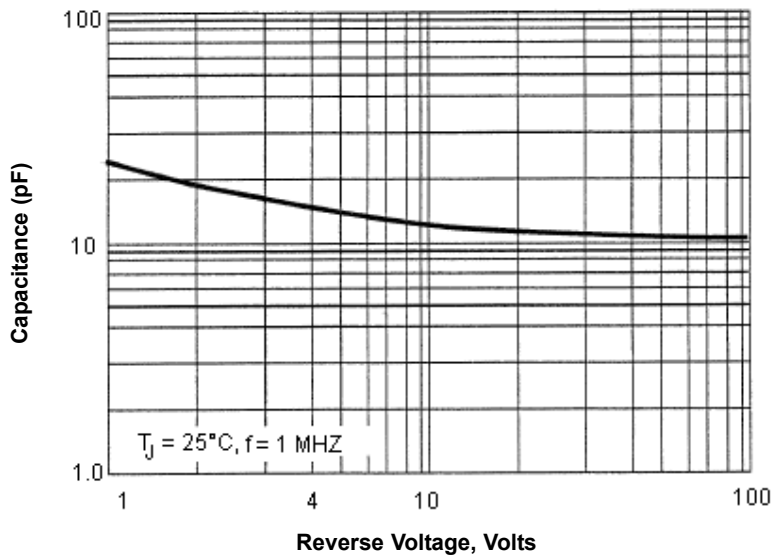
Typical Reverse Characteristics



Typical Forward Characteristics



Typical Junction Capacitance



Important Notice : This data sheet and its contents (the "Information") belong to the members of the Premier Farnell group of companies (the "Group") or are licensed to it. No licence is granted for the use of it other than for information purposes in connection with the products to which it relates. No licence of any intellectual property rights is granted. The Information is subject to change without notice and replaces all data sheets previously supplied. The Information supplied is believed to be accurate but the Group assumes no responsibility for its accuracy or completeness, any error in or omission from it or for any use made of it. Users of this data sheet should check for themselves the Information and the suitability of the products for their purpose and not make any assumptions based on information included or omitted. Liability for loss or damage resulting from any reliance on the Information or use of it (including liability resulting from negligence or where the Group was aware of the possibility of such loss or damage arising) is excluded. This will not operate to limit or restrict the Group's liability for death or personal injury resulting from its negligence. Multicomp is the registered trademark of the Group. © Premier Farnell plc 2011.

