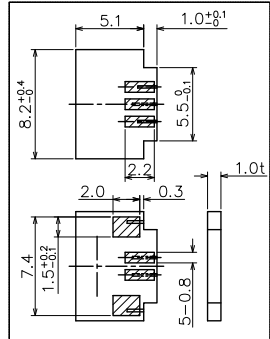
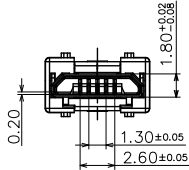
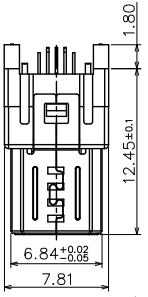
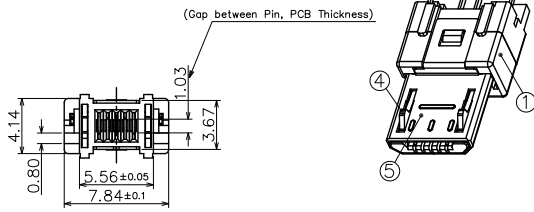


Tous droits strictement réservés. Reproduction ou communication à des tiers interdite sous quelque forme que ce soit sans autorisation écrite du propriétaire. Propriété de c FCI. Droits de reproduction FCI.

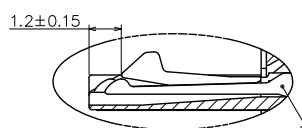
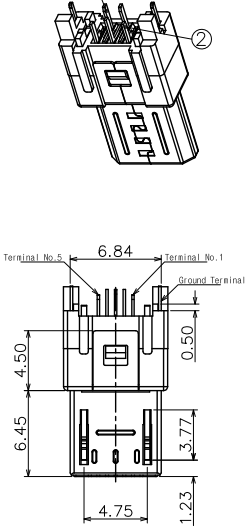


All rights strictly reserved. Reproduction or issue to third parties in any form whatever is not permitted without written authority from the proprietor. Property of FCI. Copyright FCI.

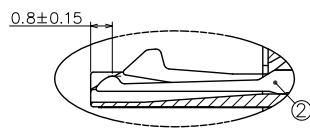
Part Number
10104109-0001LF



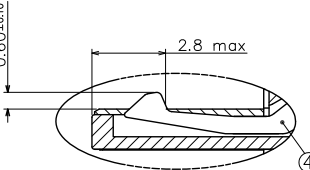
\*PCB ref.  
(Tolerance ±0.05)



Plug Contact -A Point -2EA (No.2, No.4)  
Plug Contact -B Point -1EA (No.3)



Plug Contact -B Point -2EA (No.1, No.5)



Plug Contact -LOCK TML' Point -2EA

(Table-1)

No.	Part Name	Material	Finish	Remarks
1	Plug Housing	Thermoplastic	black	
2	Plug Contact -B	Copper alloy	Selective Gold Plated	
3	Plug Contact -A	Copper alloy	Selective Gold Plated	
4	Lock Plate	Sustainess steel		
5	Plug Shield	Sustainess steel	Ni Plated	

mat'l. code		tolerances unless otherwise specified		CUSTOMER COPY		FCI		www.fciconnect.com	
ltr	ecn no	dr	date	linear	.X ± 0.38	projection	title	product family	code
A	T10-0002	J.H	01/07/10		.XX ± 0.25		MICRO-USB B-TYPE PLUG	USB	TWN
				angles	.XXX ± 0.10				
				dr	0° ± 2'	scale	A4	10104109	sheet
				enrg	JASON HSU 01/07/10	1:1			1 of 1
				chr	JASON HSU 01/07/10				
				appd	GARY HSEH 01/07/10				
					JOSEPH HSIA 01/07/10				
sheet index	revision sheet	A						cage code	
	1								

-Note-  
1. Material & finish: See table-1  
2. Packing in tray