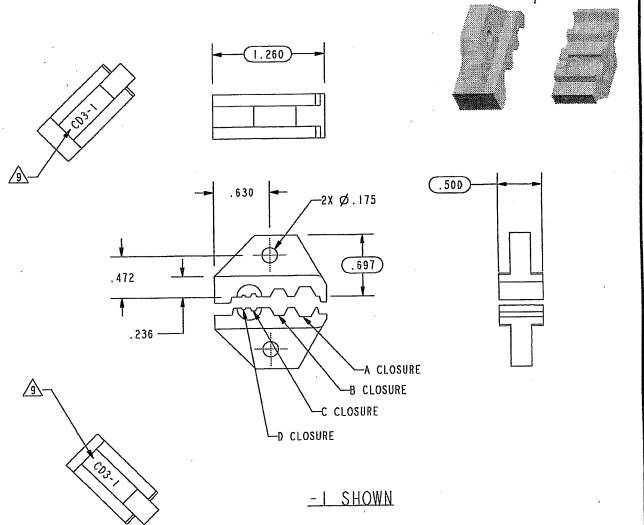


DASH NUMBER	CLOSURE				CABLE GROUPS ACCOMMODATED	MARKING
	A	B	C	D		
-1	.213 HEX	.178 HEX	.068 HEX	.042 HEX	-001,-003,-004,-007,-008,-009, -010,-011,-012,-021,-026,-027	CD3-1
-2	.324 HEX	.255 HEX	.068 HEX	.042 HEX	-013,-014,-016,-018,-019,-022, -023,-025 (-015,-018 PL130CR)	CD3-2
-3	.344 HEX	.290 HEX	.068 HEX	.042 HEX	-015,-017,-020,-024	CD3-3
-4	.193 SHIELD	.218 HEX	.197 HEX		-201,-202,-203,-204,-205,-218	CD3-4
-5		.197 HEX	.068 HEX	.042 HEX	-002,-005,-006	CD3-5
-6	.309 HEX	.272 HEX			-013,-013A,-014 PL130CP ONLY	CD3-6
-7	.263 SHIELD	.344 HEX			-201 THRU -218 ("70" SERIES ONLY)	CD3-7
-8	.263 SHIELD	.344 HEX			-207,-210 THRU -216 ("150AC" LG BODY SERIES ONLY)	CD3-8
-9	.193 SHIELD	.255 HEX			-201 THRU -206, -208, -209, -217, -218 ("150AC" SM BODY SERIES ONLY)	CD3-9
-10	.218 HEX	.165 HEX			-301 (CJ/PL150C, SPBP/S)	CD3-10
-11	.255 HEX	.178 HEX			-025 AT&T (.255), -026 AT&T (.178)	I047-D1
-12	.324 HEX	.151 HEX			-016 AT&T (.324), -027 AT&T (.151)	I047-D2
-13	.290 HEX				AT&T 619F/027C	I047-D3
-14	.213 HEX	.178 HEX	.068 HEX	.042 HEX	SPECIAL FOR NT1	CD3-14
-15	.255 HEX	.178 HEX	.068 HEX		SPECIAL FOR NYNEX	CD3-15
-16	.202 CIRCULAR	.042 BOX			SPECIAL FOR TELMEX (105-1429/1430)	CD3-16
-17	.255 HEX	.178 HEX			SPECIAL FOR TELECOM (INDENTS HEX SIZE)	CD3-17
-18	.324 HEX	.178 HEX			SPECIAL FOR TELECOM (INDENTS HEX SIZE)	CD3-18
-19	.178 HEX	.255 HEX			-025 AT&T (.255) -026 AT&T (.178)	CD3-19
-20					SAVE FOR NBC	CD3-20
-21	.290 HEX	.255 HEX	.042 HEX		1694A BELDON, 1505A BELDON, D2, D3, D4, D6, D8, D9, D11, D12	CD3-21
-22	.404 HEX	.068 HEX			BELDEN 7731A, COMSCOPE 5906, D5	CD3-22
-23	.324 HEX	.290 HEX			BELDEN 1694A, BELDEN 8281	CD3-23
-24		.178 HEX	.034 BOX		NORTEL CABLE TX 1 THRU 32	CD3-24

REVISIONS			
REV	DESCRIPTION	DATE	APPROVED
AX	REVISED PER ECO 16436	10/17/83	[Signature]



RED INDICATES ORIGINAL

- STAMP OR LASER MARK WITH .12 HIGH GOTHIC CHARACTERS APPROXIMATELY AS SHOWN ON BOTH HALVES. SEE TABLE FOR MARKING
 - 4, -7, -8, & -9 SUPPLIED WITH HEX WRENCH (.050 HEX) FOR SHIELD CRIMP ADJUSTMENT
 - GAUGE HEX CLOSURES PER TGS-3
 - .068 HEX USED ON 50Ω CONTACTS AND RIGHT ANGLE 75Ω CONTACTS ONLY. .042 HEX USED ON 75Ω CONTACTS ONLY
 - SET DEPTH OF CRIMP PIN AND LOCATOR PIN FOR -7 & -8 POSITION "A" WITH 010-0039-304 GAUGE PER TAI-136
 - SET DEPTH OF CRIMP PIN AND LOCATOR PIN FOR -4 & -9 POSITION "A" WITH 010-0039-301 GAUGE PER TAI-136
 - CRIMP DIE SETS FOR USE WITH HAND CRIMP TOOL (CT3, CT4 AND CT4L)
 - FINISH: BLACK OXIDE
 - ALL DIMENSIONS ARE APPLICABLE TO BOTH DIE HALVES EXCEPT CRIMP DIMENSIONS WHICH ARE FOR DIE HALVES IN A MATED CONDITION.
- NOTES: UNLESS OTHERWISE SPECIFIED.

TROMPETER DRAWING PER MIL-STD-189. DIMENSIONS ARE IN INCHES AND INCLUDE FINISH TOLERANCES UNLESS OTHERWISE SPECIFIED.	TOL: UNLESS SPECIFIED .XX ± .02 .XXX ± .010 ANGLE ± 1°	
DATE: 10-24-07 C.J.H. 11/1/83	MATERIAL: FINISH:	
NEXT ASSY: 076-0039	DO NOT SCALE DWG	SIZE: B 14949 SCALE: 1/1 DRAWING NO.: 010-0039 DATE: 12-22-83 SHEET: 1C