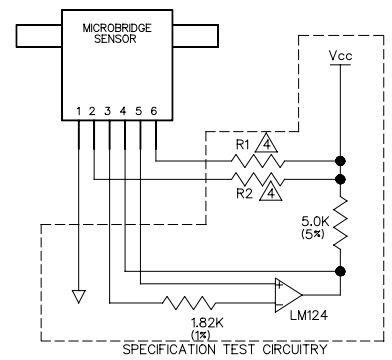
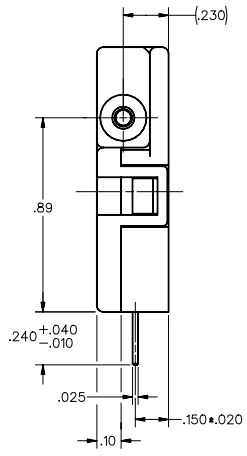
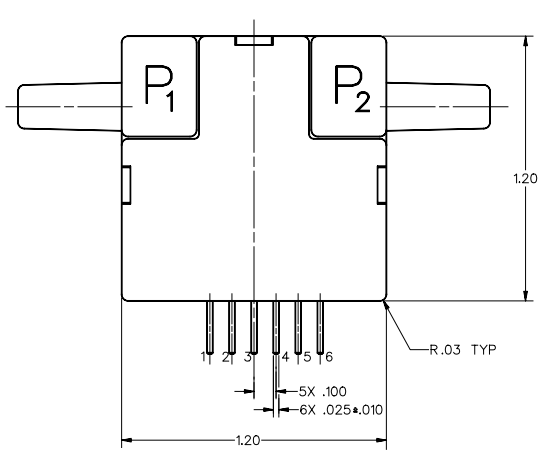
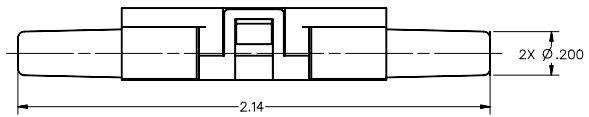


M AWM92101V



SPECIFICATIONS:	AWM92101V
RECOMMENDED EXCITATION (MAX VOLTAGE) / I_{cc}	10.000±.010 VDC (15.000 VDC MAX)
POWER CONSUMPTION	30mW MAX
NULL VOLTAGE SHIFT (-25°C TO +85°C)	±1.5mV (MAX)
OUTPUT VOLTAGE SHIFT (+25°C TO -25°C) / (+25°C TO +85°C)	+2.5% READING MAX / -2.5% READING MAX
REPEATABILITY & HYSTERESIS	±.35% READING MAX
RESPONSE TIME	3.0 msec (MAX)
OPERATING TEMPERATURE RANGE	-25°C TO +85°C
STORAGE TEMPERATURE RANGE	-40°C TO +90°C
TERMINATION	0.025 SQ. IN.
WEIGHT	10.8 GRAMS
SHOCK	100G PEAK
OVERPRESSURE	25 PSI (MAX)
SENSOR RESISTANCE (PIN 2—PIN 1, PIN 6—PIN 1)	5 K—OHMS (TYP)
SENSOR CURRENT (PIN 2—PIN 1, PIN 6—PIN 1)	0.6 mA (MAX)

AWM92101V FLOW SPECIFICATIONS:		
FLOW (Scfm)	NOMINAL (mV)	TOL. (±mV)
+FSO	200	44.50
	150	38.75
	100	30.00
	50	16.50
NULL	0	0.00
	-50	-16.50
	-100	-30.00
	-150	-38.75
-FSO	-200	-44.50

NOTE:
 1 - POSITIVE FLOW DIRECTION IS DEFINED AS PROCEEDING FROM P₁ TO P₂ AND RESULTS IN POSITIVE OUTPUT (PIN 6 > PIN 2). NEGATIVE FLOW DIRECTION IS DEFINED CONVERSELY AND RESULTS IN NEGATIVE OUTPUT (PIN 6 < PIN 2).
 OUTPUT VOLTAGE IS RATIO-METRIC TO SUPPLY VOLTAGE.
 2 - PIN 2 IS (-OUT) AND PIN 6 IS (+-OUT).
 3 - IN SPECIFICATION TEST CIRCUITRY R₁ MATCHED TO R₂ .1% DIFFERENCE MAX. NOMINAL RESISTANCE IS 24.9K±1%
 5 - FSO IS THE ALGEBRAIC DIFFERENCE BETWEEN FS @ 200 AND NULL @ 0

DRAWING NUMBER
AWM92101V
 PAGE 1 OF 1
 ISSUE 3
 RELEASE NO PR-2048
 DATE X97149-AW

REVISIONS
 DATE
 BY
 APPROVED BY
 J.A.F. 23 APR 83
 DDM/CAD
 DATE
 BY
 APPROVED BY

THIS DRAWING COVERS A PROPRIETARY ITEM AND IS THE PROPERTY OF MICRO SWITCH, A DIVISION OF HONEYWELL. THIS DRAWING IS NOT TO BE COPIED OR USED WITHOUT THE APPROVAL OF MICRO SWITCH.

MICRO SWITCH
a Honeywell Division

MASS AIRFLOW SENSOR

CATALOG LISTING
AWM92101V

THIRD ANGLE PROJECTION	
SCALE	3:1
DO NOT SCALE PRINT	
UNLESS OTHERWISE SPECIFIED TOLERANCES ARE	
ONE PLACE (L0)	±.030
TWO PLACES (L00)	±.015
THREE PLACES (L000)	±.005
ANGLES	±
WEIGHT	

MASTER REDUCED
 ANSI Y14.5M-1982 APPLIES

FED. MFG. CODE 91829