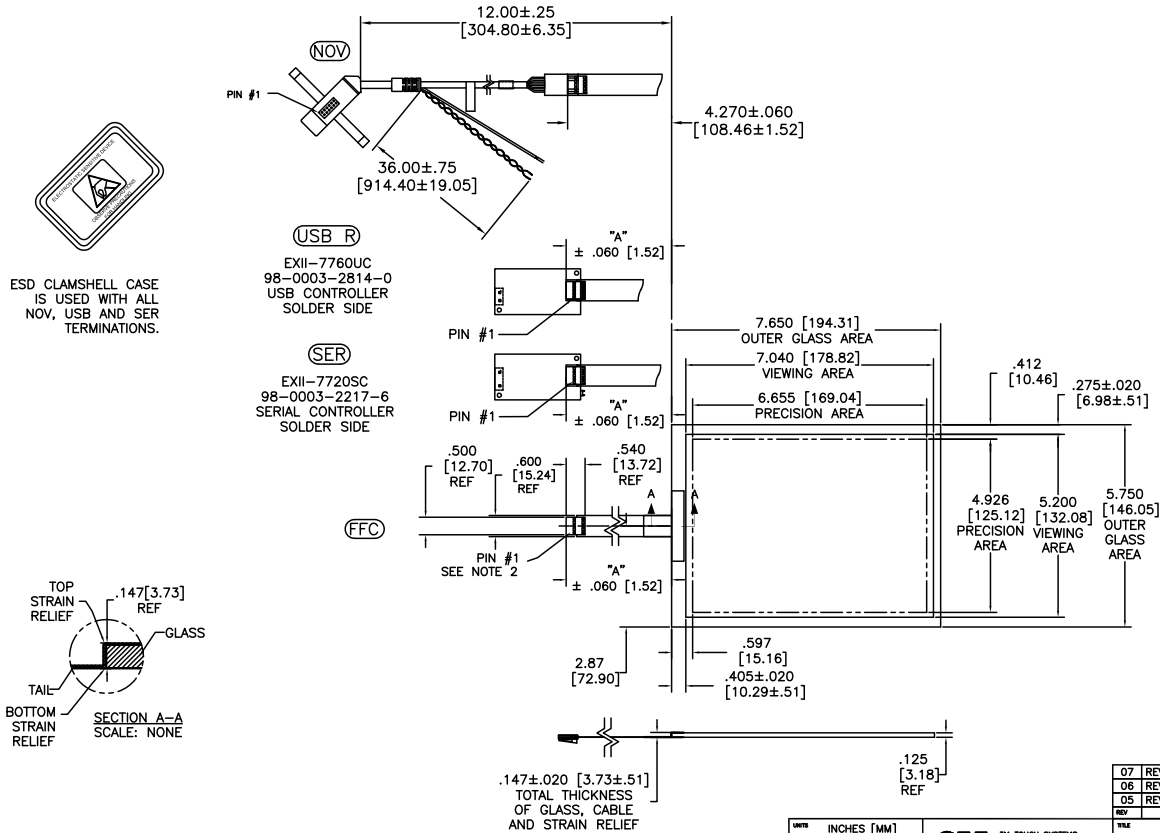


OGA DIAGONAL: 9.57 [243.08]
 VA DIAGONAL: 8.75 [222.31]
 PA DIAGONAL: 8.28 [210.31]

TOP LEVEL NUMBER	SKU 98 NUMBER	TYPE	DIM "A" (TOTAL GLASS TO CONNECTOR)	A/G FINISH	PROD SPEC
17-8921-203	98-0003-2669-8	FFC	4.27" [108.46]	AG500	23655
17-8921-221	98-0003-2672-2	SER	4.27" [108.46]	AG500	23655
17-8921-206	98-0003-2670-6	NOV	SEE DWG	AG500	23655
	98-0003-3505-3	USB	4.27" [108.46]	AG500	23655



NOTES:

- WEIGHT OF GLASS IN GRAMS: $216 \pm 10\%$
- 5 PIN AMP CONNECTOR LATCH STYLE HOUSING P/N: 487526-4 TIN CONTACTS P/N: 2-487406-4 HOUSING ORIENTED WITH LATCH DOWN

PINOUT	
1	LR
2	LL
3	SHLD
4	UL
5	UR

UNITS	INCHES [MM]
TOLERANCES UNLESS OTHERWISE SPECIFIED	
.X	±
.XX	±.03 [.76]
.XXX	±.015 [.38]
ANGLES	±1°

3M 3M TOUCH SYSTEMS
 METHUEN, MA
 USA
 THIS DOCUMENT IS COPYRIGHTED PROPERTY OF THE 3M COMPANY AND MAY NOT BE REPRODUCED WITHOUT 3M WRITTEN PERMISSION OR USED OR DISCLOSED FOR OTHER THAN 3M AUTHORIZED PURPOSES.

REV	CHANGE NOTICE	DATE	BY
07	REVISED PER CO 030952	9/09	SB
06	REVISED PER CO 030452	6/09	SB
05	REVISED PER CO 028803	03/08	SEB

MARKETING DRAWING
 SCT32NN 8.75"

DATE	10/11/05	DWG	1 OF 1
DRAWN	AVO	CHECKED	
SCALE	1 = 1	DOCUMENT NO.	28710-MKT
REV		REV	07