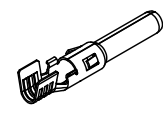
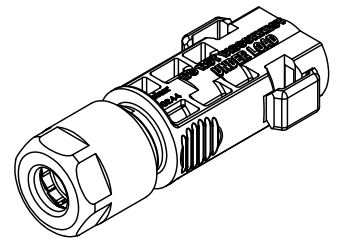
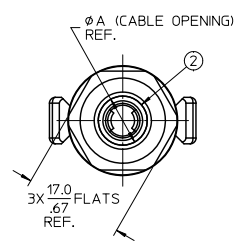
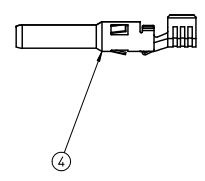
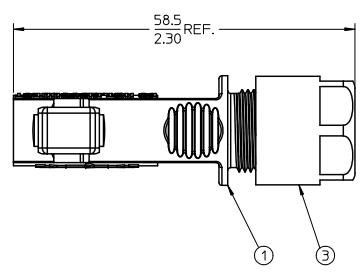
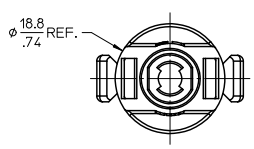


13	12	11	10	9	8	7	6	5	4	3	2	1
1302441204	2.5 mm ² / 14 AWG	5.8-6.7 / .23-.26	7.0 / .28									
1302441202	4.0-6.0 mm ² / 12-10 AWG	6.7-7.8 / .26-.31	8.4 / .33									
MATERIAL NO.	CABLE SIZE	CABLE Ø RANGE	DIM. "A"									



12-10 AWG SHOWN



NOTES:

1. MATERIALS: SEE TABLE
2. FINISHES: SEE TABLE
3. PRODUCT SPECIFICATION: PS-130244-001
4. PACKAGING SPECIFICATION: PK-130244-022
5. MATES WITH: 1302441201 OR 1302441203
6. ASSEMBLY IS ROHS COMPLIANT.
7. 5 ASSEMBLIES PER KIT.

ITEM	QTY.	DESCRIPTION	MATERIAL	FINISH
4	1	CONTACT, PIN	COPPER ALLOY	SELECTIVE SILVER
3	1	CABLE RETENTION NUT	POLYCARBONATE (PC)	BLACK
2	1	CABLE GROMMET	SILICONE	TRANSLUCENT
1	1	PIN HOUSING	POLYCARBONATE (PC)	BLACK

PRELIMINARY	EC NO: WNA2011-0336	2010/12/15
J DRWNL:CLYORK	CHK:ROT TUS	2010/12/17
APPRO:DTITUS		
REV	DESCRIPTION	QUALITY SYMBOLS
		▽=0
		▽=0

GENERAL TOLERANCES (UNLESS SPECIFIED)	
4 PLACES	±.005
3 PLACES	±.005
2 PLACES	±.010
1 PLACE	±.025
ANGULAR ± 2°	
DRAFT WHERE APPLICABLE MUST REMAIN WITHIN DIMENSIONS	

DIMENSION STYLE	
MM/IN	
DRAWN BY	DATE
CLYORK	2010/08/13
CHECKED BY	DATE
DTITUS	2010/08/13
APPROVED BY	DATE
DTITUS	2010/12/06
MATERIAL NO.	DOCUMENT NO.
	SD-130244-022
SIZE	SEE CHART

SCALE	DESIGN UNITS	THIRD ANGLE PROJECTION
2:1	METRIC	
TITLE		
PIN ASSEMBLY KIT, PV SOLAR DC CONNECTOR, 14-10 AWG		
MOLEX INCORPORATED		
DOCUMENT NO.		SHEET NO.
SD-130244-022		1 OF 1
THIS DRAWING CONTAINS INFORMATION THAT IS PROPRIETARY TO MOLEX INCORPORATED AND SHOULD NOT BE USED WITHOUT WRITTEN PERMISSION		

Id_frame_C_P_AM_T
Rev. E 2006/04/15