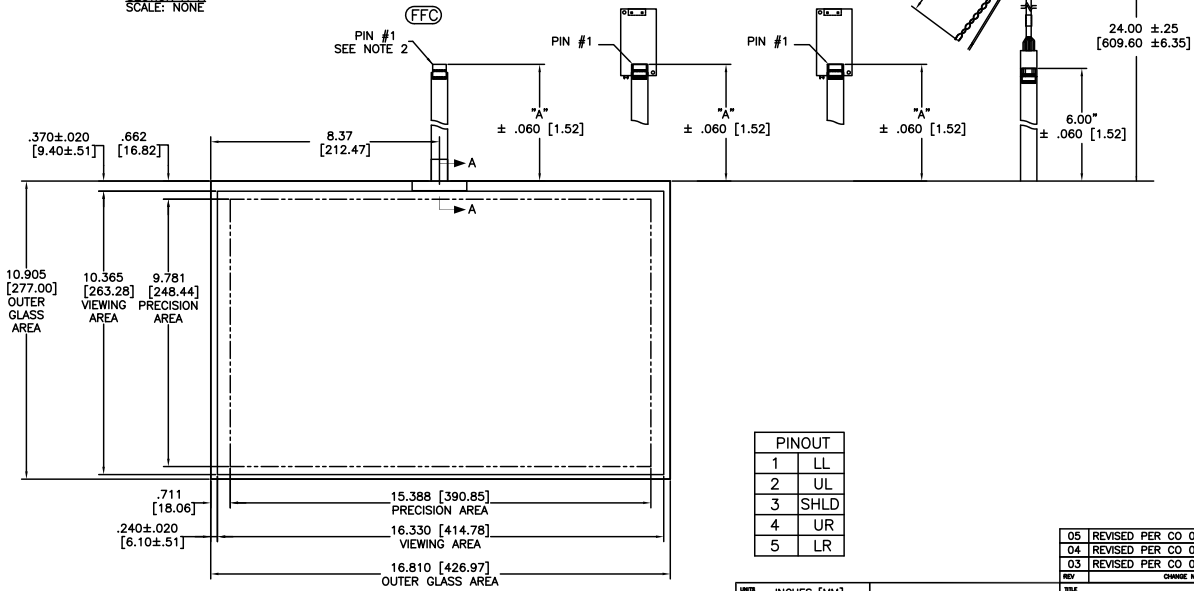
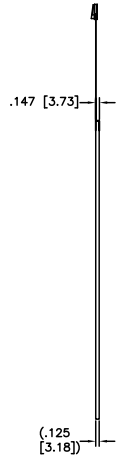
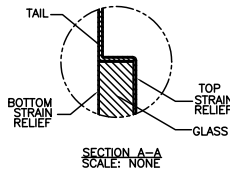


OGA DIAGONAL: 20.04 [508.95]
 VA DIAGONAL: 19.34 [491.28]
 PA DIAGONAL: 18.23 [463.13]

TOP LEVEL NUMBER	SKU 98 NUMBER	TYPE	DIM "A" (TOTAL GLASS TO CONNECTOR)	A/G FINISH	PROD SPEC
17-9251-204	98-0003-2206-9	FFC	6.00" [152.40]	AG500	23655
17-9251-205	98-0003-2716-7	FFC	8.00" [203.20]	AG500	23655
17-9251-206	98-0003-2717-5	NOV	SEE DWG	AG500	23655
17-9251-223	98-0003-2208-5	SER	6.00" [152.40]	AG500	23655
17-9251-227	98-0003-2720-9	SER	8.00" [203.20]	AG500	23655
17-9251-220	98-0003-2718-3	USB R	6.00" [152.40]	AG500	23655
17-9251-226	98-0003-3046-8	USB R	8.00" [203.20]	AG500	23655



ESD CLAMSHELL CASE IS USED WITH ALL NOV, USB AND SER TERMINATIONS.

PINOUT	
1	LL
2	UL
3	SHLD
4	UR
5	LR

- NOTES:
- WEIGHT OF GLASS IN GRAMS: 927±10%
 - 5 PIN AMP CONNECTOR LATCH STYLE HOUSING P/N: 487526-4
 TIN CONTACTS P/N: 2-487406-4
 HOUSING ORIENTED WITH LATCH DOWN

UNITS	INCHES [MM]	 3M TOUCH SYSTEMS METHUEN, MA USA <small>© COPYRIGHT 2004 THIS DOCUMENT IS COPYRIGHTED PROPERTY OF THE 3M COMPANY AND MAY NOT BE REPRODUCED WITHOUT 3M WRITTEN PERMISSION OR USED OR INCORPORATED FOR OTHER THAN 3M AUTHORIZED PURPOSES.</small>
TOLERANCES UNLESS OTHERWISE SPECIFIED	.X ± .XX ±.03 [.76] .XXX ±.015 [.38] ANGLES ±1°	
THIRD ANGLE PROJECTION		
DO NOT SCALE DRAWING	SCALE 1 = 1	
DATE	9/7/06	TITLE MARKETING DRAWING SCT32NN 19.34" W
DRAWN	MTD	CDR FORMAT AUTOCAD SHEET 1 OF 1
REV	C	DOCUMENT NO. 32739-MKT REV 05

REV	CHANGE NOTICE	DATE	DRW
05	REVISED PER CO 030452	6/09	SB
04	REVISED PER CO 028687	2/08	ACM
03	REVISED PER CO 028077	9/07	MD