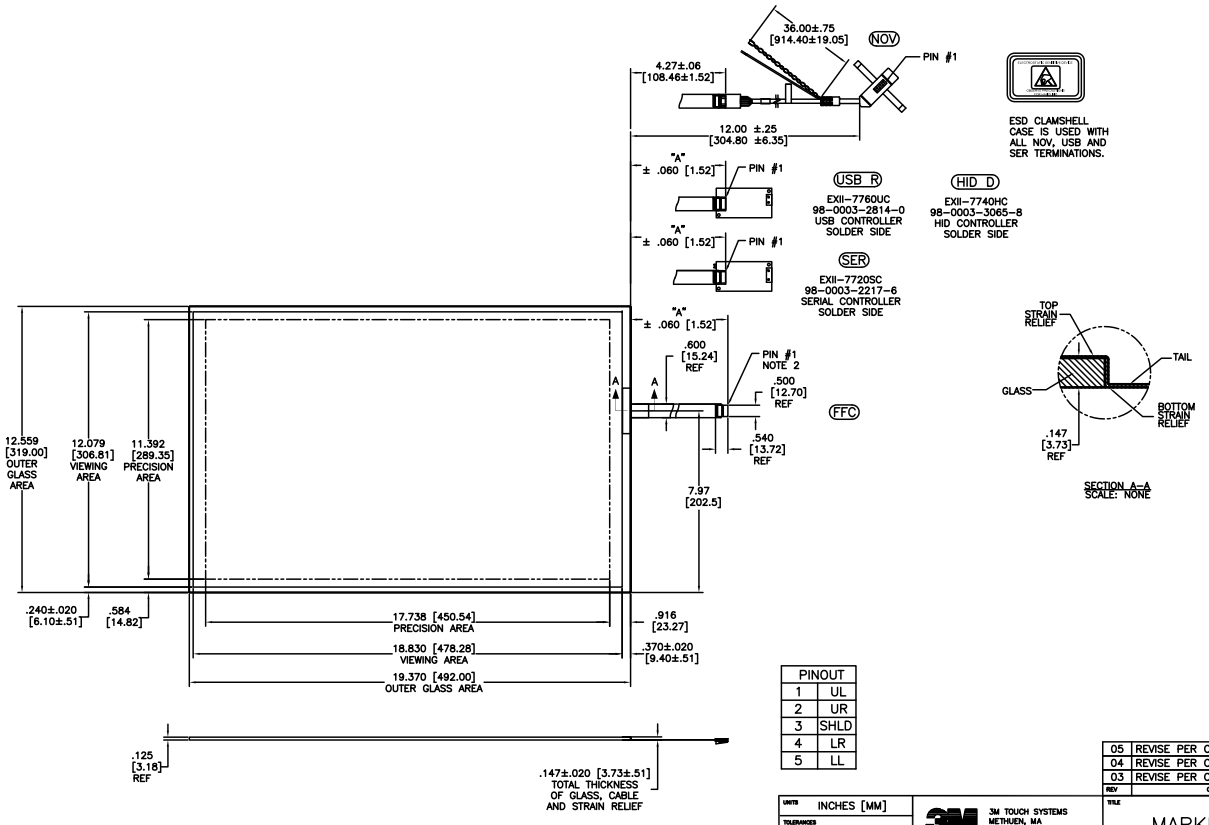


OGA DIAGONAL: 23.09 [586.4]
 VA DIAGONAL: 22.37 [568.2]
 PA DIAGONAL: 21.08 [535.5]

TOP LEVEL NUMBER	SKU 98 NUMBER	TYPE	DM "A" (TOTAL GLASS TO CONNECTOR)	A/G FINISH	PROD SPEC
17-9311-205	98-0003-2209-3	FFC	8.00" [203.20]	AG500	23655
17-9311-206	98-0003-2731-6	NOV	SEE DWG	AG500	23655
17-9311-227	98-0003-2734-0	SER	8.00" [203.20]	AG500	23655
17-9311-226	98-0003-3052-6	USB R	8.00" [203.20]	AG500	23655
N/A	98-0003-3652-3	HID D	8.00" [203.20]	AG500	23655
N/A	98-0003-3420-5	FFC	8.00" [203.20]	WC100	34523
N/A	98-0003-3418-9	SER	8.00" [203.20]	WC100	34523
N/A	98-0003-3419-7	USB R	8.00" [203.20]	WC100	34523



PINOUT	
1	UL
2	UR
3	SHLD
4	LR
5	LL

- NOTES:
1. WEIGHT OF GLASS IN GRAMS: 1196±10%
 2. 5 PIN AMP CONNECTOR LATCH STYLE HOUSING P/N: 487526-4
TIN CONTACTS P/N: 2-487406-4
HOUSING ORIENTED WITH LATCH DOWN

3M 3M TOUCH SYSTEMS
 WETUEN, MA
 USA

THIS DOCUMENT IS COPYRIGHTED PROPERTY OF THE 3M COMPANY AND MAY NOT BE REPRODUCED WITHOUT 3M WRITTEN PERMISSION OR USED OR DISCLOSED FOR OTHER THAN AUTHORIZED PURPOSES.

DATE: 4/07
 DRAWN: AH
 CHECKED: AUTOCAD
 SHEET: 1 OF 1

SCALE: 1 = 1

REV	CHANGE NOTICE	DATE	BY
05	REVISE PER CO 032175	10/10	SB
04	REVISE PER CO 031906	7/10	SB
03	REVISE PER CO 030452	6/09	SB

MARKETING DRAWING
 SCT32NN 22.37" W

DOCUMENT NO. 34079-MKT
 REV 05