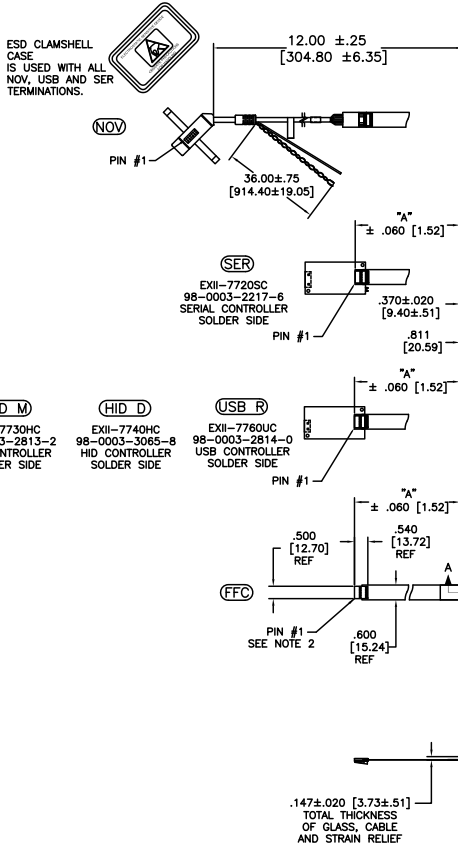


OGA DIAGONAL: 20.44 [519.08]  
 VA DIAGONAL: 19.71 [500.74]  
 PA DIAGONAL: 18.58 [472.03]

TOP LEVEL NUMBER	SKU 98 NUMBER	TYPE	DM "A" (TOTAL GLASS TO CONNECTOR)	A/G FINISH	PROD SPEC
17-8051-203	98-0003-2532-8	FFC	4.27" [108.46]	AG500	23655
17-8051-205	98-0003-2185-5	FFC	8.00" [203.20]	AG500	23655
17-8051-206	98-0003-2186-3	NOV	SEE DWG	AG500	23655
17-8051-221	98-0003-2537-7	SER	4.27" [108.46]	AG500	23655
17-8051-227	98-0003-2927-0	SER	8.00" [203.20]	AG500	23655
17-8051-218	98-0003-2535-1	USB R	4.27" [108.46]	AG500	23655
17-8051-226	98-0003-3114-4	USB R	8.00" [203.20]	AG500	23655
N/A	98-0003-3535-0	HID D	8.00" [203.20]	AG500	23655
N/A	98-0003-3199-5	HID M	8.00" [203.20]	AG500	23655
N/A	98-0003-3413-0	SER	6.00" [152.40]	AG500	23655
N/A	98-0003-3421-3	SER	6.00" [152.40]	WC100	34523
N/A	98-0003-3422-1	USB	6.00" [152.40]	WC100	34523
N/A	98-0003-3423-9	FFC	6.00" [152.40]	WC100	34523



PINOUT	
1	LR
2	LL
3	SHIELD
4	UL
5	UR

- NOTES:
- WEIGHT OF GLASS IN GRAMS: 1005±10%
  - 5 PIN AMP CONNECTOR LATCH STYLE HOUSING P/N: 487526-4 TIN CONTACTS P/N: 2-487406-4 HOUSING ORIENTED WITH LATCH DOWN

UNITS: INCHES [MM] TOLERANCES UNLESS OTHERWISE SPECIFIED: .X ± .XX ±.03 [.76] .XXX ±.015 [.38] ANGLES ±1° THIRD ANGLE PROJECTION DO NOT SCALE DRAWING SCALE: 1 = 1	3M TOUCH SYSTEMS METHUEN, MA USA © COPYRIGHT 2005 THIS DOCUMENT IS COPYRIGHTED PROPERTY OF THE 3M COMPANY AND MAY NOT BE REPRODUCED WITHOUT 3M WRITTEN PERMISSION OR USED OR DISCLOSED FOR OTHER THAN 3M AUTHORIZED PURPOSES.	TITLE: MARKETING DRAWING SCT32NN 19.71" DRAWN: K. CROWLEY 9/05 DATE: 9/05 SHEET: 1 OF 1 DOCUMENT NO.: 28177-MKT REV: 10
--	---	---

10	REVISED PER CO 031907	7/10	SB
09	REVISED PER CO 031876	7/10	SB
08	REVISED PER CO 031738	6/10	MTD