

4

3

2

1

THIS DRAWING IS UNPUBLISHED. RELEASED FOR PUBLICATION JUNE ,2004.

COPYRIGHT 2004 BY TYCO ELECTRONICS CORPORATION. ALL RIGHTS RESERVED.

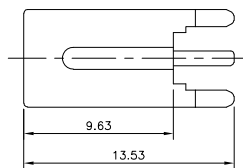
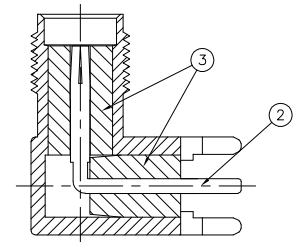
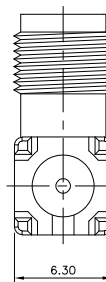
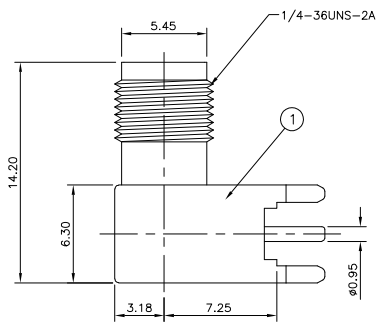
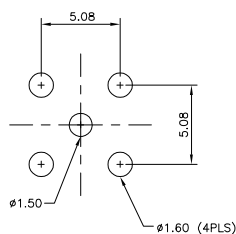
LOC  
EDIST  
B

## REVISIONS

P	LTR	DESCRIPTION	DATE	DWN	APVD
B		ECR-06-026419	09NOV06	JMS	FWK

## NOTES

- 1 SINGLE PACK IN ACCORDANCE WITH AMP SPEC 107-3275
- 2 100 TRAY PACK IN ACCORDANCE WITH AMP SPEC 107-3275
- 3 Au PLATING
4. ELECTRICAL CHARACTERISTICS  
FREQUENCY RANGE: DC-3GHz  
NOMINAL IMPEDANCE: 50 OHMS  
INSULATION RESISTANCE: 5000 MOHMS  
DIELECTRIC WITHSTAND VOLTAGE: 500V RMS  
CONTACT RESISTANCE:  
CENTRE CONTACT: 3 mOHMS  
OUTER CONTACT: 2 mOHMS
5. MECHANICAL CHARACTERISTICS  
DURABILITY: 50 CYCLES  
TORQUE SETTING: 0.15-0.20 NM
6. FOR TECHNICAL DATA REFER TO YOUR LOCAL TYCO ELECTRONICS SALES OFFICE
7. ALL DIMENSIONS ARE NOMINAL FOR REFERENCE ONLY UNLESS OTHERWISE STATED

RECOMMENDED PCB LAYOUT  
WITH MOUNTING POSTS

						1	1	PTFE	INSULATOR	3
						1	1	BERYLLIUM COPPER	CONTACT	2
						1	1	ZINC ALLOY	BODY	1
						5	15	MATERIAL	DESCRIPTION	ITEM

QUANTITY PER ASSY

PARTS LIST

THIS DRAWING IS A CONTROLLED DOCUMENT.

DWN J.SANDWELL 16JUN04

CHK S.PARLOW 16JUN04

APVD F.WHEELER-KING 16JUN04

PRODUCT SPEC

APPLICATION SPEC

WEIGHT

CUSTOMER DRAWING

tyco  
ElectronicsTyco Electronics Corporation  
Bideford, UK, EX39 4HE

NAME

SMA RIGHT ANGLE PCB SOCKET DIE CAST

SIZE

CAGE CODE

DRAWING NO

RESTRICTED TO

A3 00779 C-1814400

SCALE

NTS

SHEET

1 OF 1

REV

B