

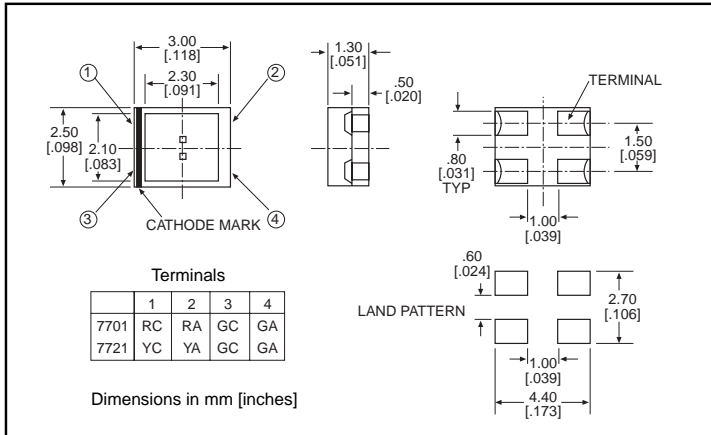
**microLED<sup>®</sup>**

**Surface Mount LED  
Bi-Color**

**Dialight**

**597-77x1-5xx**

**1**

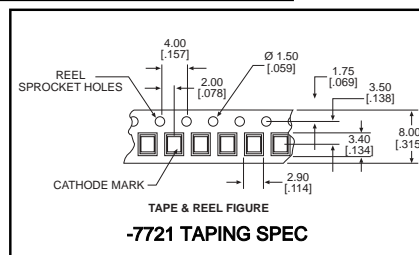
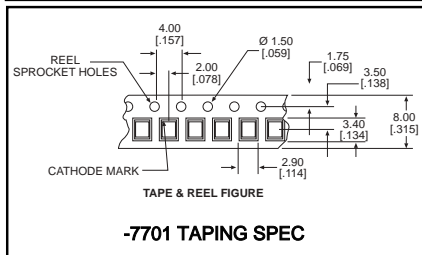


**PART NO.\***  
597-7701-5xx  
597-7721-5xx

**COLOR**  
Red/Green  
Yellow/Green

**Features**

- Compatible with automatic placement equipment
- Compatible with infrared reflow processes
- Packaged on 8mm tape, 7" reels (meets EIA-481-1 standard)
- Helps to eliminate mixed technology PC board processing
- Compatible with Dialight's Optopipe™ Series light pipes



<b>*ORDERING INFORMATION</b>	
<b>597-77x1-5xx</b>	
packaging option	
02	20 pieces on tape
07	7" reel, 2500 pcs/reel

**ABSOLUTE MAXIMUM RATINGS** (T<sub>A</sub>=25°C)

	Red/Green <b>-7701</b>	Yellow/Green <b>-7721</b>
Power Dissipation (mW)	60/60	60/60
Derating (mA/°C) From 25°C	.4/.3	.4/.3
Forward Current (mA)	25/25	25/25
Peak Current (mA) Pulse width = 10 μs	60/60	60/60
Operating Temperature (°C)	-30/+85	-25/+80
Storage Temperature (°C)	-40/+85	-30/+85
Soldering Profile	240°C to 245°C, 5 seconds max.	

Solder Adherence per MIL-STD-202E, Method 208C

**OPERATING CHARACTERISTICS** (T<sub>A</sub>=25°C)

		Red/Green <b>-7701</b>	Yellow/Green <b>-7721</b>
Luminous Intensity (mcd)	Min.	3.6/9	3.6/9
I <sub>F</sub> =20mA	Typical	6.3/20	6.3/20
Peak Wavelength (nm) λ <sub>Peak</sub>	Typical	650/570	585/563
Viewing Angle (2θ ½)	Typical	104°	104°
Forward Voltage (V)	Typical	2/2.2	2.1/2.2
I <sub>F</sub> =20mA	Max.	2.8/2.8	2.8/2.8
Reverse Current (μA) (V <sub>R</sub> =4V)		100/100	100/100

θ ½ is the off axis angle at which the luminous intensity is half the axial luminous intensity