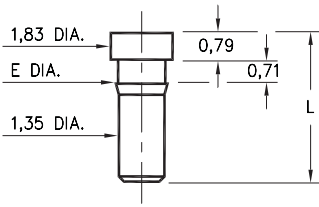


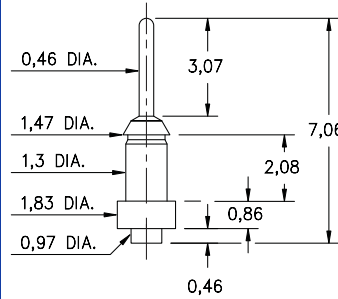
**0259/0286/1941**



Basic Part Number	Length L	Barb Dia. E	Mounting Hole
0259-0	4,39	1,57	1,5
0286-0	2,92	1,52	1,45
1941-0	4,29	1,47	1,45

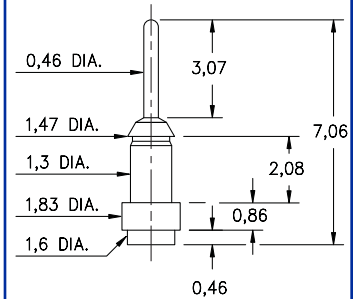
**02XX-0-00-XX-00-00-03-0**  
Press-fit in 1,45/1,5 mounting hole

**2956-0**



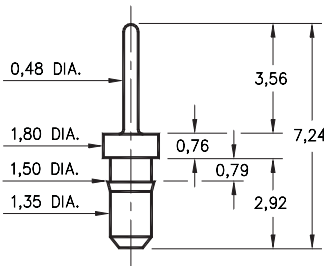
**2956-0-00-XX-00-00-03-0**  
Surface mount

**2956-1**



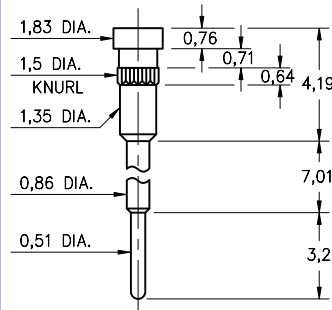
**2956-1-00-XX-00-00-03-0**  
Surface mount

**8876**



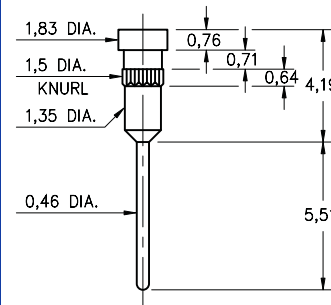
**8876-0-00-XX-00-00-03-0**  
Press-fit in 1,45 mounting hole

**1938**



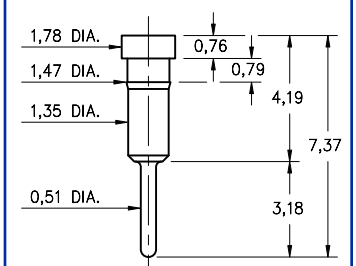
**1938-0-00-XX-00-00-03-0**  
Press-fit in 1,45 mounting hole

**1940**



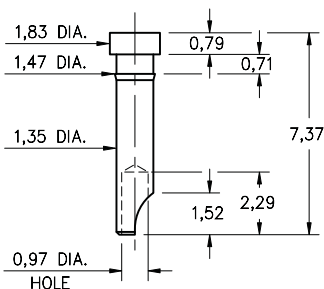
**1940-0-00-XX-00-00-03-0**  
Press-fit in 1,45 mounting hole

**1942**



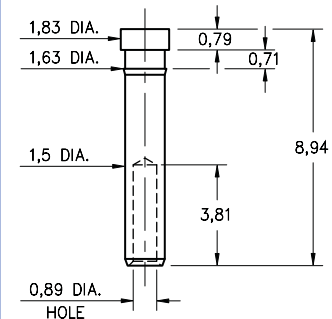
**1942-0-00-XX-00-00-03-0**  
Press-fit in 1,45 mounting hole

**3024**



**3024-0-01-XX-00-00-03-0**  
Press-fit in 1,45 mounting hole

**3000**



**3000-0-00-XX-00-00-03-0**  
Press-fit in 1,55 mounting hole

**SPECIFICATIONS**

**PIN MATERIAL:**  
Brass Alloy 360, 1/2 Hard  
( Except Swage pins which are annealed )

**DIMENSION IN INCHES**  
**TOLERANCES ON:**  
LENGTHS: ±0,13  
DIAMETERS: ±0,05  
ANGLES: ± 2°

**ORDER CODE: XXXX - X - 0X - XX - 00 - 00 - XX - 0**

**BASIC PART #**

**SPECIFY PIN FINISH:**

- 01 5,08µm TIN/LEAD OVER NICKEL
- ◇ 80 5,08µm TIN OVER NICKEL (RoHS)
- ◇ 15 0,25µm GOLD OVER NICKEL (RoHS)
- ◇ 21 0,51µm GOLD OVER NICKEL (RoHS)
- ◇ 34 1,27µm GOLD OVER NICKEL (RoHS)

