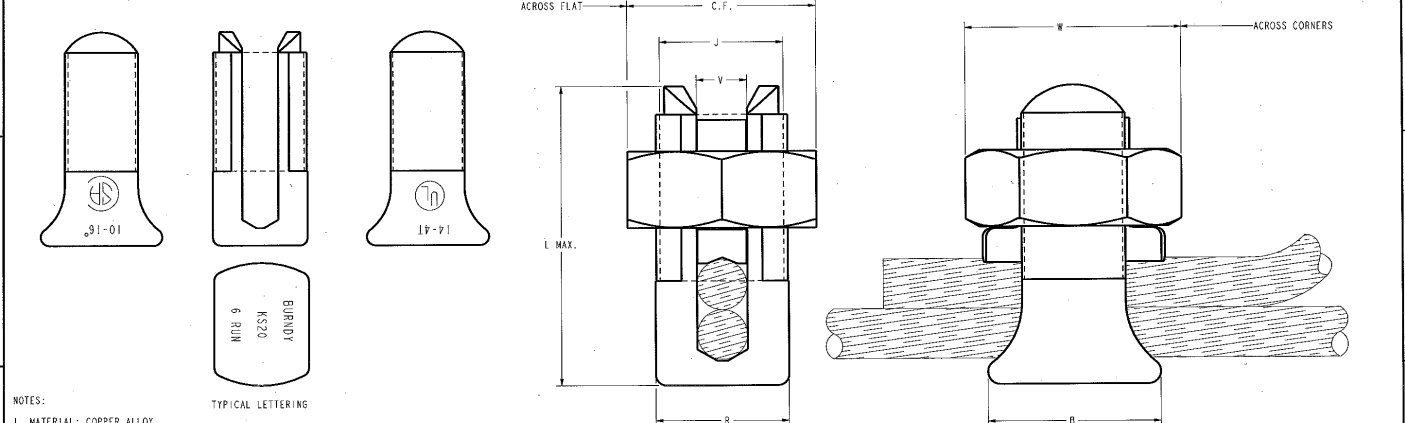


CATALOG NUMBER	AWG				CATALOG NUMBER	METRIC WIRE SIZE			
	RANGE FOR EQUAL RUN & TAP (COPPER)					RANGE FOR EQUAL RUN & TAP (COPPER)			
	MAX. SOLID CONDUCTOR	MINIMUM	MAXIMUM	MINIMUM TAP WITH MAXIMUM CABLE RUN		MAX. SOLID CONDUCTOR	MINIMUM	MAXIMUM	MINIMUM TAP WITH MAXIMUM CABLE RUN
KS15	#8 SOL (.129)	#10 STR (.116)	#8 STR (.146)	#14 STR (.073)	KS15	1.0mm ² SOL [3.2]	6mm ² STR [3.3]	1.0mm ² STR [4.0]	2.5mm ² STR [2.2]
KS17	#6 SOL (.162)	#8 STR (.146)	#6 STR (.184)	#14 STR (.073)	KS17	16mm ² SOL [4.0]	10mm ² STR [4.0]	1.0mm ² STR [4.0]	2.5mm ² STR [2.2]
KS20	#4 SOL (.204)	#8 STR (.146)	#4 STR (.232)	#14 STR (.073)	KS20	-----	18mm ² STR [4.0]	16mm ² STR [5.1]	2.5mm ² STR [2.2]
KS22	#2 SOL (.258)	#6 STR (.184)	#3 STR (.260)	#14 STR (.073)	KS22	-----	16mm ² STR [5.1]	25mm ² STR [6.3]	2.5mm ² STR [2.2]
KS23	#1 SOL (.289)	#6 STR (.184)	#2 STR (.292)	#14 STR (.073)	KS23	-----	16mm ² STR [5.1]	35mm ² STR [7.5]	2.5mm ² STR [2.2]
KS25	2/0 SOL (.365)	#4 STR (.232)	1/0 STR (.373)	#14 STR (.073)	KS25	-----	25mm ² STR [6.3]	50mm ² STR [9.0]	2.5mm ² STR [2.2]
KS26	3/0 SOL (.410)	#2 STR (.292)	2/0 STR (.418)	#14 STR (.073)	KS26	-----	35mm ² STR [7.5]	70mm ² STR [10.5]	2.5mm ² STR [2.2]
KS27	4/0 SOL (.460)	#1 STR (.332)	3/0 STR (.470)	#8 SOL (.129)	KS27	-----	50mm ² STR [9.0]	95mm ² STR [12.5]	10mm ² SOL [3.2]
KS29	4/0 SOL (.460)	#1 STR (.332)	250 Kcmil (.575)	#8 SOL (.129)	KS29	-----	50mm ² STR [9.0]	120mm ² STR [14.0]	10mm ² SOL [3.2]
KS31	-----	1/0 STR (.373)	350 Kcmil (.681)	1/0 STR (.373)	KS31	-----	70mm ² STR [10.5]	185mm ² STR [17.5]	70mm ² STR [10.5]
KS34	-----	2/0 STR (.418)	500 Kcmil (.814)	2/0 STR (.418)	KS34	-----	70mm ² STR [10.5]	240mm ² STR [20.6]	70mm ² STR [10.5]
KS39	-----	4/0 STR (.528)	750 Kcmil (.998)	4/0 STR (.528)	KS39	-----	120mm ² STR [14.0]	300mm ² STR [22.5]	120mm ² STR [14.0]
KS44	-----	300 Kcmil (.630)	1600 Kcmil (1.152)	4/0 STR (.528)	KS44	-----	150mm ² STR [15.7]	500mm ² STR [29.1]	120mm ² STR [14.0]
KS90	#8 SOL (.129)	#12 STR (.092)	#10 STR (.116)	#16 STR (.058)	KS90	-----	4mm ² STR [2.3]	8mm ² STR [3.3]	1.5mm ² STR [1.4]



- NOTES:
1. MATERIAL: COPPER ALLOY
 2. DIMENSIONS IN BRACKET [] ARE IN MILLIMETERS ROUNDED OFF TO THE NEAREST MILLIMETER, UNLESS OTHERWISE NOTED, AND ARE FOR REFERENCE ONLY.
 3. UL 486A LISTED. FILE NO. E9498.
 4. CSA C22.2 NO. 65 LISTED. FILE NO. 42862.
 5. UL467 LISTED, FILE NO. E9999. SUITABLE FOR DIRECT BURIAL. THIS DOES NOT APPLY TO KS39 & KS44.
 6. CSA C22.2 NO. 41 CERTIFIED. SUITABLE FOR DIRECT BURIAL. THIS DOES NOT APPLY TO KS39 & KS44.
 7. THIS DRAWING TO BE INTERPRETED PER ASME Y14.5M-1994.

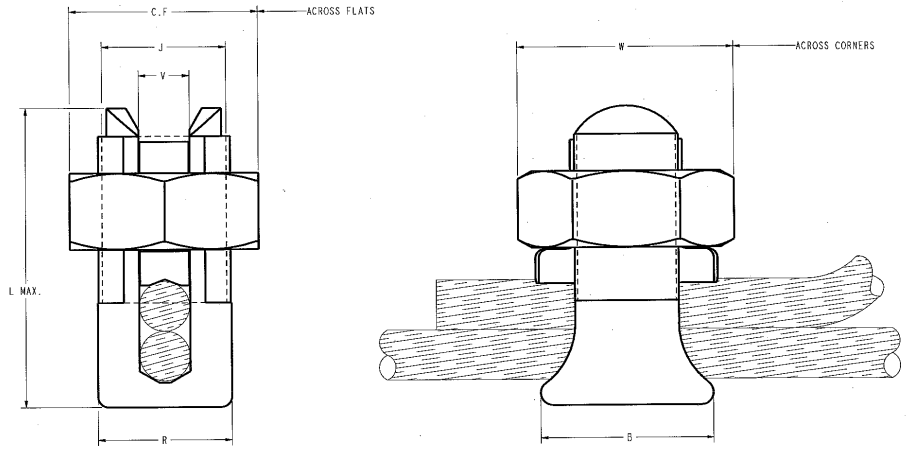
TO ORDER BURNDY PRODUCTS CALL 1-800-346-4715
 MANCHESTER, NH 03103, USA
 FOR PRODUCT INFO - VISIT www.burndy.com

REVIT™

LINK NO.	SEE TABLE
CAT. NO.	SEE TABLE
DRAWG. B.C. #	17032789
CRUISE - B.C.	1228278
ISSN APPL.	--
IMP. SPECS.	--
ISA APPL.	--
IMP. SPECS.	--
PROJ. FAX	--
PROJ. #	-----
PRODUCT	SIZE
QUANTITY	SCALE
REV. LEVEL	RELEASED

DRAWING NO. SDO78561
 SHEET 1 OF 2

CATALOG NUMBER	B	C.F.	J	L MAX.	R	V REF.	W REF.
KS15	.45 (11)	.50 (13)	3/8"-24NF-2	.85 (22)	.38 (10)	.14 (4)	.57 (15)
KS17	.58 (15)	.63 (16)	7/16"-20NF-2	1.14 (30)	.45 (11)	.16 (4)	.70 (18)
KS20	.65 (17)	.64 (16)	1/2"-20NF-2	1.20 (31)	.51 (13)	.22 (6)	.78 (20)
KS22	.69 (18)	.75 (19)	19/32"-20NS-2	1.50 (38)	.60 (15)	.26 (7)	.84 (21)
KS23	.72 (18)	.82 (21)	5/8"-18UNF-2	1.54 (39)	.62 (16)	.32 (8)	.92 (23)
KS25	.81 (21)	.94 (24)	3/4"-16UNF-2	1.77 (45)	.73 (19)	.38 (10)	1.06 (27)
KS26	.90 (23)	1.05 (27)	7/8"-14UNF-2	1.94 (49)	.82 (21)	.44 (11)	1.18 (30)
KS27	1.00 (25)	1.36 (35)	1 1/8"-12NF-2	2.04 (52)	1.17 (30)	.55 (14)	1.56 (37)
KS29	1.00 (25)	1.36 (35)	1 1/8"-12NF-2	2.22 (56)	1.24 (32)	.60 (15)	1.56 (37)
KS31	1.25 (32)	1.70 (43)	1 3/8"-12UNF-2	2.60 (66)	1.41 (36)	.71 (18)	1.96 (50)
KS34	1.31 (33)	1.82 (46)	1 7/16"-12UN-2	2.83 (72)	1.48 (38)	.85 (22)	2.10 (53)
KS39	1.15 (45)	2.31 (59)	1 7/8"-12UN-2	3.51 (89)	1.94 (49)	1.02 (26)	2.62 (67)
KS44	2.10 (53)	2.56 (65)	2 1/8"-12UN-2	3.90 (99)	2.19 (56)	1.17 (28)	2.91 (74)
KS90	.45 (11)	.50 (13)	3/8"-24NF-2	.85 (22)	.38 (10)	.14 (4)	.57 (15)



- NOTES:
1. MATERIAL: COPPER ALLOY
 2. DIMENSIONS IN BRACKET () ARE IN MILLIMETERS ROUNDED OFF TO THE NEAREST MILLIMETER, UNLESS OTHERWISE NOTED, AND ARE FOR REFERENCE ONLY.
 3. UL 486A LISTED. FILE NO. E9498.
 4. CSA C22.2 NO. 65 LISTED. FILE NO. 42862.
 5. NUL467 LISTED, FILE NO. E9999. SUITABLE FOR DIRECT BURIAL. THIS DOES NOT APPLY TO KS39 & KS44.
 6. CSA C22.2 NO. 41 CERTIFIED. SUITABLE FOR DIRECT BURIAL. THIS DOES NOT APPLY TO KS39 & KS44.
 7. THIS DRAWING TO BE INTERPRETED PER ASME Y14.5M-1994.

TO ORDER SURMOT PRODUCTS CALL 1-800-348-4175
 MANCHESTER, NH 03109, USA
 FOR PRODUCT INFO: <http://Amg-5.com/connect.com>

SERVIT™

TITLE NO.	SEE TABLE
CAT. NO.	KS - (TABLE)
DRAWN BY:	B.G. (2/25/21)
CHECKED BY:	B.G. (2/28/21)
DES. APPR.	---
MFG. APPR.	---
QA APPR.	---
DEL. APPR.	---
PROD. PLAN.	---
PROJ. MGR.	---
ISSUED BY:	---
DATE:	---
SCALE:	---
DRAWING NO.	SD078561
PRODUCT:	D
REVISION:	---
SHEET NO.:	2 OF 2