

High-speed Multi-phase PLL Clock Buffer

Features

- 500-ps max. Total Timing Budget™ (TTB™) window
- 12–100-MHz (CY7B993V), or 24–200-MHz (CY7B994V) input/output operation
- Matched pair output skew < 200 ps
- Zero input-to-output delay
- 18 LVTTTL outputs driving 50Ω terminated lines
- 16 outputs at 200 MHz: Commercial temperature
- 6 outputs at 200 MHz: Industrial temperature
- 3.3V LVTTTL/LVPECL, fault-tolerant, and hot insertable reference inputs
- Phase adjustments in 625-/1300-ps steps up to ± 10.4 ns
- Multiply/divide ratios of 1–6, 8, 10, 12
- Individual output bank disable
- Output high-impedance option for testing purposes
- Fully integrated phase-locked loop (PLL) with lock indicator
- <50-ps typical cycle-to-cycle jitter
- Single 3.3V ± 10% supply
- 100-pin TQFP package
- 100-lead BGA package

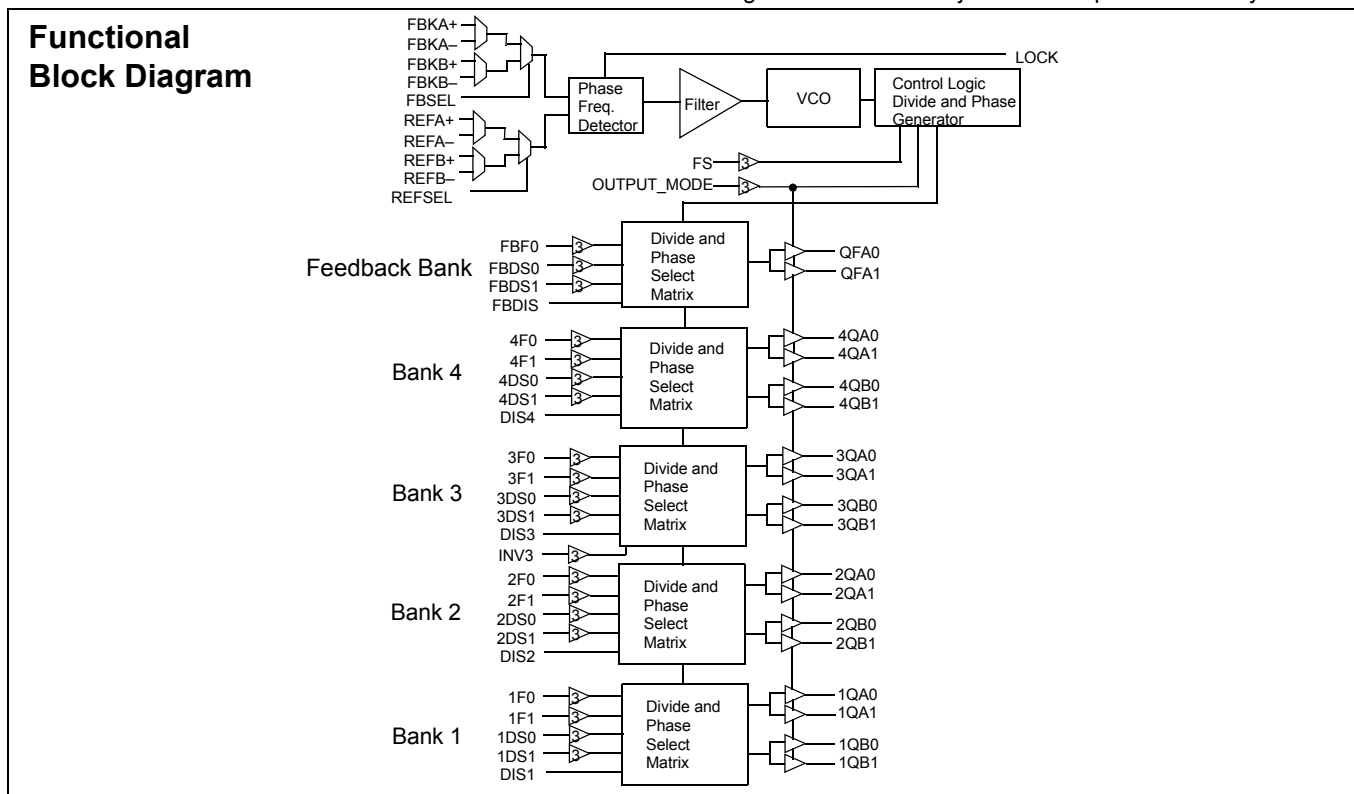
Functional Description

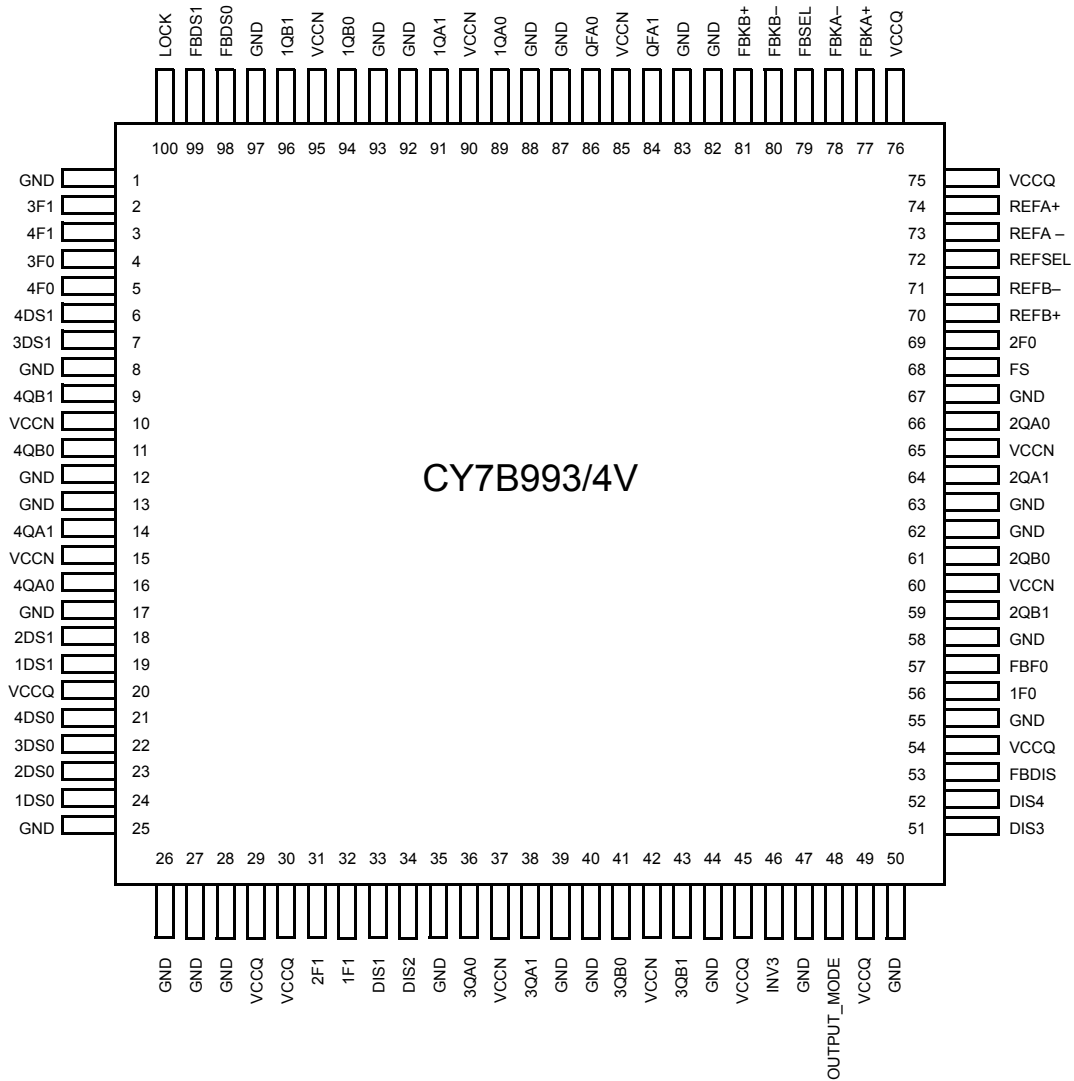
The CY7B993V and CY7B994V High-speed Multi-phase PLL Clock Buffers offer user-selectable control over system clock functions. This multiple-output clock driver provides the system integrator with functions necessary to optimize the timing of high-performance computer and communication systems.

These devices feature a guaranteed maximum TTB window specifying all occurrences of output clocks with respect to the input reference clock across variations in output frequency, supply voltage, operating temperature, input edge rate, and process.

Eighteen configurable outputs each drive terminated transmission lines with impedances as low as 50Ω while delivering minimal and specified output skews at LVTTTL levels. The outputs are arranged in five banks. Banks 1 to 4 of four outputs allow a divide function of 1 to 12, while simultaneously allowing phase adjustments in 625–1300-ps increments up to 10.4 ns. One of the output banks also includes an independent clock invert function. The feedback bank consists of two outputs, which allows divide-by functionality from 1 to 12 and limited phase adjustments. Any one of these eighteen outputs can be connected to the feedback input as well as driving other inputs.

Selectable reference input is a fault tolerance feature that allows smooth change-over to secondary clock source, when the primary clock source is not in operation. The reference inputs and feedback inputs are configurable to accommodate both LVTTTL or Differential (LVPECL) inputs. The completely integrated PLL reduces jitter and simplifies board layout.



Pin Configurations
100-pin TQFP


Pin Configurations (continued)

100-lead BGA

| | 1 | 2 | 3 | 4 | 5 | 6 | 7 | 8 | 9 | 10 |
|----------|-------------------|-------------------|-------------------|------|--------------------|--------------------|------------------|-----------------------------|------------------|-------|
| A | 1QB1 | 1QB0 | 1QA1 | 1QA0 | QFA0 | QFA1 | FBKB+ | VCCQ | FBKA– | FBKA+ |
| B | VCCN | VCCN | VCCN | VCCN | VCCN | VCCN | VCCQ | FBKB– | FBSEL | REFA+ |
| C | GND | GND | GND | GND | GND | GND | VCCQ | GND | GND | REFA– |
| D | LOCK | 4F0 (3_level) | 3F1 (3_level) | GND | FBDS1 (3_level) | FBDS0 (3_level) | 2F0 (3_level) | VCCQ | REFSEL | REFB– |
| E | 4QB1 | VCCN | 4DS1 (3_level) | GND | 3F0 (3_level) | 4F1 (3_level) | GND | FS (3_level) | VCCN | REFB+ |
| F | 4QB0 | VCCN | 3DS1 (3_level) | GND | GND | GND | GND | FBF0 (3_level) | VCCN | 2QA0 |
| G | 4QA1 | 2DS1 (3_level) | VCCQ | GND | GND | GND | GND | VCCQ | 1F0 (3_level) | 2QA1 |
| H | 4QA0 | 1DS1 (3_level) | 1DS0 (3_level) | VCCQ | GND | GND | VCCQ | OUTPUT MODE (3_level) | FBDIS | 2QB0 |
| J | 4DS0 (3_level) | 3DS0 (3_level) | 2DS0 (3_level) | DIS1 | VCCN | VCCN | GND | INV3 (3_level) | DIS3 | 2QB1 |
| K | 2F1 (3_level) | 1F1 (3_level) | DIS2 | VCCN | 3QA0 | 3QA1 | GND | 3QB0 | 3QB1 | DIS4 |

Pin Definitions [1]

| Pin Name | I/O | Pin Type | Pin Description |
|------------------------------|-------|------------------|--|
| FBSEL | Input | LVTTL | Feedback Input Select: When LOW, FBKA inputs are selected. When HIGH, the FBKB inputs are selected. This input has an internal pull-down. |
| FBKA+, FBKA– FBKB+, FBKB– | Input | LVTTL/ LVDIFF | Feedback Inputs: One pair of inputs selected by the FBSEL is used to feedback the clock output xQn to the phase detector. The PLL will operate such that the rising edges of the reference and feedback signals are aligned in both phase and frequency. These inputs can operate as differential PECL or single-ended TTL inputs. When operating as a single-ended LVTTL input, the complementary input must be left open. |
| REFA+, REFA– REFB+, REFB– | Input | LVTTL/ LVDIFF | Reference Inputs: These inputs can operate as differential PECL or single-ended TTL reference inputs to the PLL. When operating as a single-ended LVTTL input, the complementary input must be left open. |
| REFSEL | Input | LVTTL | Reference Select Input: The REFSEL input controls how the reference input is configured. When LOW, it will use the REFA pair as the reference input. When HIGH, it will use the REFB pair as the reference input. This input has an internal pull-down. |
| FS | Input | 3-level Input | Frequency Select: This input must be set according to the nominal frequency (f_{NOM}) (see <i>Table 1</i>). |
| FBF0 | Input | 3-level Input | Feedback Output Phase Function Select: This input determines the phase function of the Feedback bank's QFA[0:1] outputs (see <i>Table 3</i>). |

Note:

- For all three-state inputs, HIGH indicates a connection to V_{CC} , LOW indicates a connection to GND, and MID indicates an open connection. Internal termination circuitry holds an unconnected input to $V_{CC}/2$.

Pin Definitions (continued)^[1]

| Pin Name | I/O | Pin Type | Pin Description |
|------------------|--------|---------------|--|
| FBDS[0:1] | Input | 3-level Input | Feedback Divider Function Select: These inputs determine the function of the QFA0 and QFA1 outputs (see <i>Table 4</i>). |
| FBDIS | Input | LVTTTL | Feedback Disable: This input controls the state of QFA[0:1]. When HIGH, the QFA[0:1] is disabled to the “HOLD-OFF” or “HI-Z” state; the disable state is determined by OUTPUT_MODE. When LOW, the QFA[0:1] is enabled (see <i>Table 5</i>). This input has an internal pull-down. |
| [1:4]F[0:1] | Input | 3-level Input | Output Phase Function Select: Each pair controls the phase function of the respective bank of outputs (see <i>Table 3</i>). |
| [1:4]DS[0:1] | Input | 3-level Input | Output Divider Function Select: Each pair controls the divider function of the respective bank of outputs (see <i>Table 4</i>). |
| DIS[1:4] | Input | LVTTTL | Output Disable: Each input controls the state of the respective output bank. When HIGH, the output bank is disabled to the “HOLD-OFF” or “HI-Z” state; the disable state is determined by OUTPUT_MODE. When LOW, the [1:4]Q[A:B][0:1] is enabled (see <i>Table 5</i>). These inputs each have an internal pull-down. |
| INV3 | Input | 3-level Input | Invert Mode: This input only affects Bank 3. When this input is LOW, each matched output pair will become complementary (3QA0+, 3QA1–, 3QB0+, 3QB1–). When this input is HIGH, all four outputs in the same bank will be inverted. When this input is MID all four outputs will be non inverting. |
| LOCK | Output | LVTTTL | PLL Lock Indicator: When HIGH, this output indicates the internal PLL is locked to the reference signal. When LOW, the PLL is attempting to acquire lock. |
| OUTPUT_MODE | Input | 3-Level Input | Output Mode: This pin determines the clock outputs’ disable state. When this input is HIGH, the clock outputs will disable to high-impedance (HI-Z). When this input is LOW, the clock outputs will disable to “HOLD-OFF” mode. When in MID, the device will enter factory test mode. |
| QFA[0:1] | Output | LVTTTL | Clock Feedback Output: This pair of clock outputs is intended to be connected to the FB input. These outputs have numerous divide options and three choices of phase adjustments. The function is determined by the setting of the FBDS[0:1] pins and FBF0. |
| [1:4]Q[A:B][0:1] | Output | LVTTTL | Clock Output: These outputs provide numerous divide and phase select functions determined by the [1:4]DS[0:1] and [1:4]F[0:1] inputs. |
| VCCN | | PWR | Output Buffer Power: Power supply for each output pair. |
| VCCQ | | PWR | Internal Power: Power supply for the internal circuitry. |
| GND | | PWR | Device Ground. |

Block Diagram Description
Phase Frequency Detector and Filter

These two blocks accept signals from the REF inputs (REFA+, REFA–, REFB+, or REFB–) and the FB inputs (FBKA+, FBKA–, FBKB+, or FBKB–). Correction information is then generated to control the frequency of the voltage-controlled oscillator (VCO). These two blocks, along with the VCO, form a PLL that tracks the incoming REF signal.

The CY7B993V/994V have a flexible REF and FB input scheme. These inputs allow the use of either differential LVPECL or single-ended LVTTTL inputs. To configure as single-ended LVTTTL inputs, the complementary pin must be left open (internally pulled to 1.5V). The other input pin can then be used as an LVTTTL input. The REF inputs are also tolerant to hot insertion.

The REF inputs can be changed dynamically. When changing from one reference input to the other of the same frequency, the PLL is optimized to ensure that the clock output period will not be less than the calculated system budget ($t_{MIN} = t_{REF}$ (nominal reference clock period) – t_{CCJ} (cycle-to-cycle jitter) – t_{PDEV} (max. period deviation)) while reacquiring the lock.

VCO, Control Logic, Divider, and Phase Generator

The VCO accepts analog control inputs from the PLL filter block. The FS control pin setting determines the nominal operational frequency range of the divide by one output (f_{NOM}) of the device. f_{NOM} is directly related to the VCO frequency. There are two versions: a low-speed device (CY7B993V) where f_{NOM} ranges from 12 MHz to 100 MHz, and a high-speed device (CY7B994V) that ranges from 24 MHz to 200 MHz. The FS setting for each device is shown in *Table 1*.

The f_{NOM} frequency is seen on “divide-by-one” outputs. For the CY7B994V, the upper f_{NOM} range extends from 96 MHz to 200 MHz.

Table 1. Frequency Range Select

| FS ^[2] | CY7B993V | | CY7B994V | |
|-------------------|------------------------|------|------------------------|------|
| | f _{NOM} (MHz) | | f _{NOM} (MHz) | |
| | Min. | Max. | Min. | Max. |
| LOW | 12 | 26 | 24 | 52 |
| MID | 24 | 52 | 48 | 100 |
| HIGH | 48 | 100 | 96 | 200 |

Time Unit Definition

Selectable skew is in discrete increments of time unit (t_U). The value of a t_U is determined by the FS setting and the maximum nominal output frequency. The equation to be used to determine the t_U value is as follows:

$$t_U = 1/(f_{NOM} * N).$$

N is a multiplication factor which is determined by the FS setting. f_{NOM} is nominal frequency of the device. N is defined in Table 2.

Table 2. N Factor Determination

| FS | CY7B993V | | CY7B994V | |
|------|----------|---|----------|---|
| | N | f _{NOM} (MHz) at which t _U = 1.0 ns | N | f _{NOM} (MHz) at which t _U = 1.0 ns |
| LOW | 64 | 15.625 | 32 | 31.25 |
| MID | 32 | 31.25 | 16 | 62.5 |
| HIGH | 16 | 62.5 | 8 | 125 |

Divide and Phase Select Matrix

The Divide and Phase Select Matrix is comprised of five independent banks: four banks of clock outputs and one bank for feedback. Each clock output bank has two pairs of low-skew, high-fanout output buffers ([1:4]Q[A:B][0:1]), two phase function select inputs ([1:4]F[0:1]), two divider function selects ([1:4]DS[0:1]), and one output disable (DIS[1:4]).

The feedback bank has one pair of low-skew, high-fanout output buffers (QFA[0:1]). One of these outputs may connect to the selected feedback input (FBK[A:B]±). This feedback bank also has one phase function select input (FBF0), two divider function selects FSDS[0:1], and one output disable (FBDIS).

The phase capabilities that are chosen by the phase function select pins are shown in Table 3. The divide capabilities for each bank are shown in Table 4.

Notes:

- The level to be set on FS is determined by the "nominal" operating frequency (f_{NOM}) of the V_{CO} and Phase Generator. f_{NOM} always appears on an output when the output is operating in the undivided mode. The REF and FB are at f_{NOM} when the output connected to FB is undivided.
- BK1, BK2 denotes following the skew setting of Bank1 and Bank2, respectively.

Table 3. Output Skew Select Function

| Function Selects | | Output Skew Function | | | | |
|------------------|------------------|----------------------|------------------|--------------------|--------------------|------------------|
| [1:4]F1 | [1:4]F0 and FBF0 | Bank1 | Bank2 | Bank3 | Bank4 | Feed-back Bank |
| LOW | LOW | -4t _U | -4t _U | -8t _U | -8t _U | -4t _U |
| LOW | MID | -3t _U | -3t _U | -7t _U | -7t _U | NA |
| LOW | HIGH | -2t _U | -2t _U | -6t _U | -6t _U | NA |
| MID | LOW | -1t _U | -1t _U | BK1 ^[3] | BK1 ^[3] | NA |
| MID | MID | 0t _U | 0t _U | 0t _U | 0t _U | 0t _U |
| MID | HIGH | +1t _U | +1t _U | BK2 ^[3] | BK2 ^[3] | NA |
| HIGH | LOW | +2t _U | +2t _U | +6t _U | +6t _U | NA |
| HIGH | MID | +3t _U | +3t _U | +7t _U | +7t _U | NA |
| HIGH | HIGH | +4t _U | +4t _U | +8t _U | +8t _U | +4t _U |

Table 4. Output Divider Function

| Function Selects | | Output Divider Function | | | | |
|--------------------|--------------------|-------------------------|--------|--------|--------|----------------|
| [1:4]DS1 and FBDS1 | [1:4]DS0 and FBDS0 | Bank 1 | Bank 2 | Bank 3 | Bank 4 | Feed-back Bank |
| LOW | LOW | /1 | /1 | /1 | /1 | /1 |
| LOW | MID | /2 | /2 | /2 | /2 | /2 |
| LOW | HIGH | /3 | /3 | /3 | /3 | /3 |
| MID | LOW | /4 | /4 | /4 | /4 | /4 |
| MID | MID | /5 | /5 | /5 | /5 | /5 |
| MID | HIGH | /6 | /6 | /6 | /6 | /6 |
| HIGH | LOW | /8 | /8 | /8 | /8 | /8 |
| HIGH | MID | /10 | /10 | /10 | /10 | /10 |
| HIGH | HIGH | /12 | /12 | /12 | /12 | /12 |

Figure 1 illustrates the timing relationship of programmable skew outputs. All times are measured with respect to REF with the output used for feedback programmed with 0t_U skew. The PLL naturally aligns the rising edge of the FB input and REF input. If the output used for feedback is programmed to another skew position, then the whole t_U matrix will shift with respect to REF. For example, if the output used for feedback is programmed to shift -8t_U, then the whole matrix is shifted forward in time by 8t_U. Thus an output programmed with 8t_U of skew will effectively be skewed 16t_U with respect to REF.

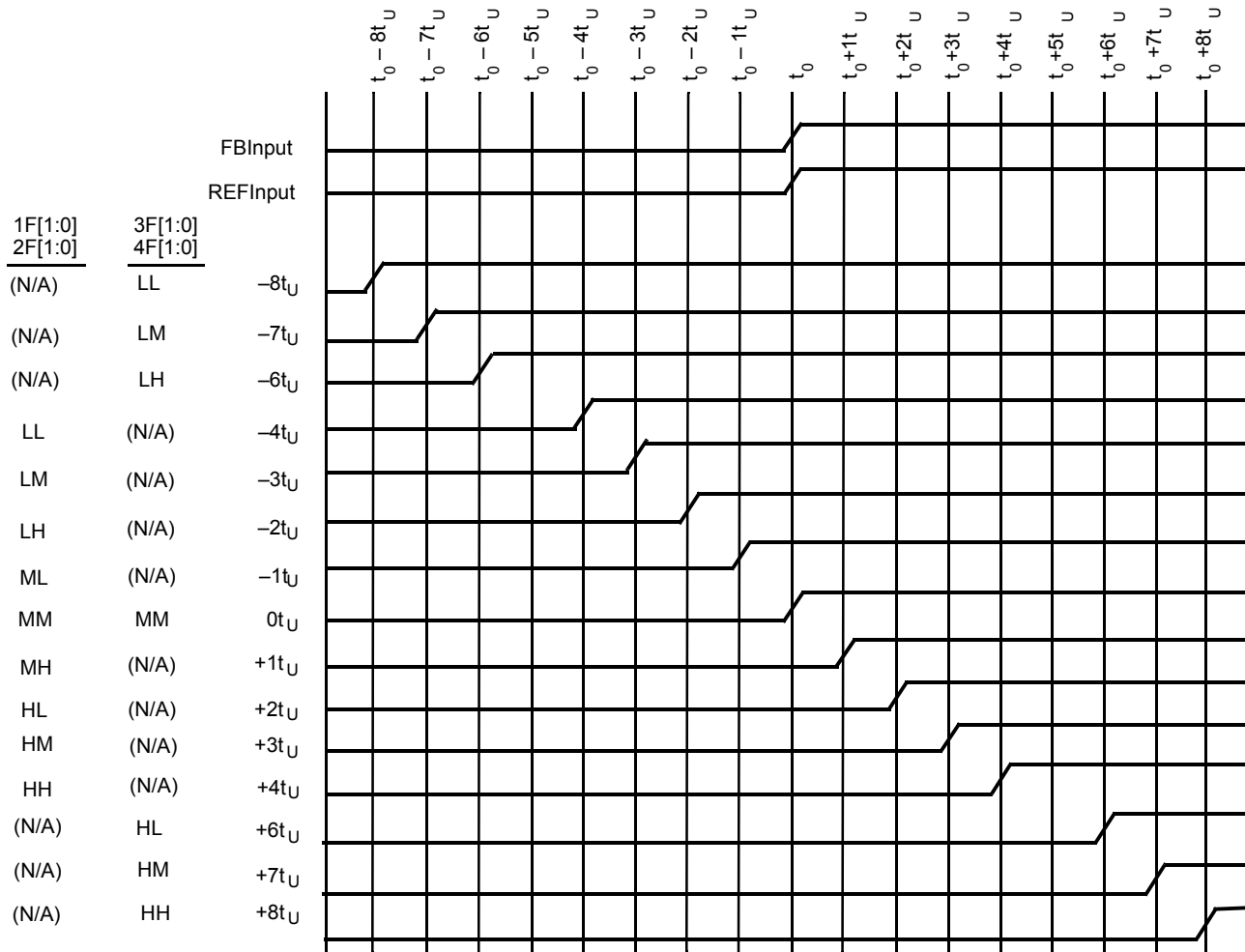


Figure 1. Typical Outputs with FB Connected to a Zero-Skew Output^[4]

Output Disable Description

The feedback Divide and Phase Select Matrix Bank has two outputs, and each of the four Divide and Phase Select Matrix Banks have four outputs. The outputs of each bank can be independently put into a HOLD-OFF or high-impedance state. The combination of the OUTPUT_MODE and DIS[1:4]/FBDIS inputs determines the clock outputs' state for each bank. When the DIS[1:4]/FBDIS is LOW, the outputs of the corresponding bank will be enabled. When the DIS[1:4]/FBDIS is HIGH, the outputs for that bank will be disabled to a high-impedance (HI-Z) or HOLD-OFF state depending on the OUTPUT_MODE input. *Table 5* defines the disabled output functions.

The HOLD-OFF state is intended to be a power saving feature. An output bank is disabled to the HOLD-OFF state in a maximum of six output clock cycles from the time when the disable input (DIS[1:4]/FBDIS) is HIGH. When disabled to the

HOLD-OFF state, non-inverting outputs are driven to a logic LOW state on its falling edge. Inverting outputs are driven to a logic HIGH state on its rising edge. This ensures the output clocks are stopped without glitch. When a bank of outputs is disabled to HI-Z state, the respective bank of outputs will go HI-Z immediately.

Table 5. DIS[1:4]/FBDIS Pin Functionality

| OUTPUT_MODE | DIS[1:4]/FBDIS | Output Mode |
|-------------|----------------|--------------|
| HIGH/LOW | LOW | ENABLED |
| HIGH | HIGH | HI-Z |
| LOW | HIGH | HOLD-OFF |
| MID | X | FACTORY TEST |

Note:

4. FB connected to an output selected for "Zero" skew (i.e., FBF0 = MID or XF[1:0] = MID).

INV3 Pin Function

Bank3 has signal invert capability. The four outputs of Bank3 will act as two pairs of complementary outputs when the INV3 pin is driven LOW. In complementary output mode, 3QA0 and 3QB0 are non-inverting; 3QA1 and 3QB1 are inverting outputs. All four outputs will be inverted when the INV3 pin is driven HIGH. When the INV3 pin is left in MID, the outputs will not invert. Inversion of the outputs are independent of the skew and divide functions. Therefore, clock outputs of Bank3 can be inverted, divided, and skewed at the same time.

Lock Detect Output Description

The LOCK detect output indicates the lock condition of the integrated PLL. Lock detection is accomplished by comparing the phase difference between the reference and feedback inputs. Phase error is declared when the phase difference between the two inputs is greater than the specified device propagation delay limit (t_{PD}).

When in the locked state, after four or more consecutive feedback clock cycles with phase-errors, the LOCK output will be forced LOW to indicate out-of-lock state.

When in the out-of-lock state, 32 consecutive phase-errorless feedback clock cycles are required to allow the LOCK output to indicate lock condition (LOCK = HIGH).

If the feedback clock is removed after LOCK has gone HIGH, a "Watchdog" circuit is implemented to indicate the out-of-lock condition after a time-out period by deasserting LOCK LOW. This time out period is based upon a divided down reference clock.

This assumes that there is activity on the selected REF input. If there is no activity on the selected REF input then the LOCK detect pin may not accurately reflect the state of the internal PLL.

Factory Test Mode Description

The device will enter factory test mode when the OUTPUT_MODE is driven to MID. In factory test mode, the device will operate with its internal PLL disconnected; input level supplied to the reference input will be used in place of the PLL output. In TEST mode the selected FB input(s) must be tied LOW. All functions of the device are still operational in factory test mode except the internal PLL and output bank disables. The OUTPUT_MODE input is designed to be a static input. Dynamically toggling this input from LOW to HIGH may temporarily cause the device to go into factory test mode (when passing through the MID state).

Factory Test Reset

When in factory test mode (OUTPUT_MODE = MID), the device can be reset to a deterministic state by driving the DIS4 input HIGH. When the DIS4 input is driven HIGH in factory test mode, all clock outputs will go to HI-Z; after the selected reference clock pin has five positive transitions, all the internal finite state machines (FSM) will be set to a deterministic state. The deterministic state of the state machines will depend on the configurations of the divide selects, skew selects, and frequency select input. All clock outputs will stay in high-impedance mode and all FSMs will stay in the deterministic state until DIS4 is deasserted. When DIS4 is deasserted (with OUTPUT_MODE still at MID), the device will re-enter factory test mode.

Safe Operating Zone

Figure 2 illustrates the operating condition at which the device does not exceed its allowable maximum junction temperature of 150°C. Figure 2 shows the maximum number of outputs that can operate at 185 MHz (with 25-pF load and no air flow) or 200 MHz (with 10-pF load and no air flow) at various ambient temperatures. At the limit line, all other outputs are configured to divide-by-two (i.e., operating at 92.5 MHz) or lower frequencies. The device will operate below maximum allowable junction temperature of 150°C when its configuration (with the specified constraints) falls within the shaded region (safe operating zone). Figure 2 shows that at 85°C, the maximum number of outputs that can operate at 200 MHz is 6; and at 70°C, the maximum number of outputs that can operate at 185 MHz is 16 (with 25-pF load and 0-m/s air flow).

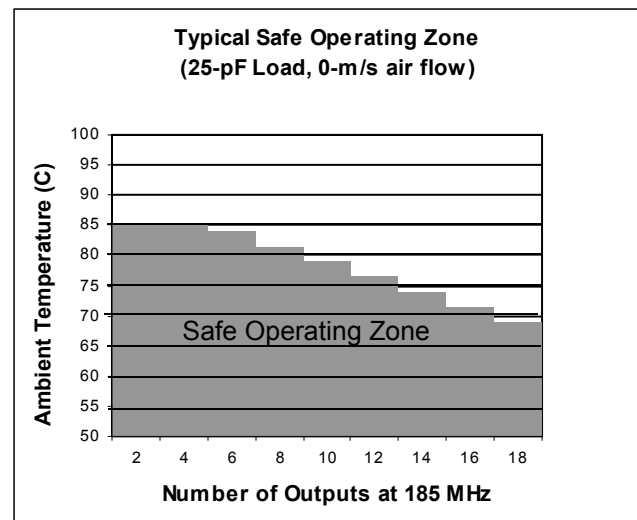


Figure 2. Typical Safe Operating Zone

Absolute Maximum Conditions^[5]

(Above which the useful life may be impaired. For user guidelines, not tested.)

Storage Temperature -40°C to + 125°C
 Ambient Temperature with Power Applied..... -40°C to + 125°C
 Supply Voltage to Ground Potential -0.5V to + 4.6V
 DC Input Voltage..... -0.3V to $V_{CC} + 0.5V$

Output Current into Outputs (LOW)..... 40 mA
 Static Discharge Voltage..... > 1100V (per MIL-STD-883, Method 3015)
 Latch-up Current..... > ± 200 mA

Operating Range

| Range | Ambient Temperature | V_{CC} |
|------------|---------------------|------------|
| Commercial | 0°C to +70°C | 3.3V ± 10% |
| Industrial | -40°C to +85°C | 3.3V ± 10% |

Electrical Characteristics Over the Operating Range

| Parameter | Description | Test Conditions | Min. | Max. | Unit | |
|---|---------------------------------------|-----------------------------------|---|----------------|----------------|----|
| LVTTTL Compatible Output Pins (QFA[0:1], [1:4]Q[A:B][0:1], LOCK) | | | | | | |
| V_{OH} | LVTTTL HIGH Voltage | QFA[0:1], [1:4]Q[A:B][0:1] | $V_{CC} = \text{Min.}, I_{OH} = -30 \text{ mA}$ | 2.4 | - | V |
| | | LOCK | $I_{OH} = -2 \text{ mA}, V_{CC} = \text{Min.}$ | 2.4 | - | V |
| V_{OL} | LVTTTL LOW Voltage | QFA[0:1], [1:4]Q[A:B][0:1] | $V_{CC} = \text{Min.}, I_{OL} = 30 \text{ mA}$ | - | 0.5 | V |
| | | LOCK | $I_{OL} = 2 \text{ mA}, V_{CC} = \text{Min.}$ | - | 0.5 | V |
| I_{OZ} | High-impedance State Leakage Current | | -100 | 100 | µA | |
| LVTTTL Compatible Input Pins (FBKA±, FBKB±, REFA±, REFB±, FBSEL, REFSEL, FBDIS, DIS[1:4]) | | | | | | |
| V_{IH} | LVTTTL Input HIGH | FBK[A:B]±, REF[A:B]± | Min. ≤ V_{CC} ≤ Max. | 2.0 | $V_{CC} + 0.3$ | V |
| | | REFSEL, FBSEL, FBDIS, DIS[1:4] | | 2.0 | $V_{CC} + 0.3$ | V |
| V_{IL} | LVTTTL Input LOW | FBK[A:B]±, REF[A:B]± | Min. ≤ V_{CC} ≤ Max. | -0.3 | 0.8 | V |
| | | REFSEL, FBSEL, FBDIS, DIS[1:4] | | -0.3 | 0.8 | V |
| I_I | LVTTTL $V_{IN} > V_{CC}$ | FBK[A:B]±, REF[A:B]± | $V_{CC} = \text{GND}, V_{IN} = 3.63V$ | - | 100 | µA |
| I_{IH} | LVTTTL Input HIGH Current | FBK[A:B]±, REF[A:B]± | $V_{CC} = \text{Max.}, V_{IN} = V_{CC}$ | - | 500 | µA |
| | | REFSEL, FBSEL, FBDIS, DIS[1:4] | $V_{IN} = V_{CC}$ | - | 500 | µA |
| I_{IL} | LVTTTL Input LOW Current | FBK[A:B]±, REF[A:B]± | $V_{CC} = \text{Max.}, V_{IN} = \text{GND}$ | -500 | - | µA |
| | | REFSEL, FBSEL, FBDIS, DIS[1:4] | | -500 | - | µA |
| Three-level Input Pins (FBF0, FBDS[0:1], [1:4]F[0:1], [1:4]DS[0:1], FS, OUTPUT_MODE(TEST)) | | | | | | |
| V_{IHH} | Three-level Input HIGH ^[6] | | Min. ≤ V_{CC} ≤ Max. | 0.87* V_{CC} | - | V |
| V_{IMM} | Three-level Input MID ^[6] | | Min. ≤ V_{CC} ≤ Max. | 0.47* V_{CC} | 0.53* V_{CC} | V |
| V_{ILL} | Three-level Input LOW ^[6] | | Min. ≤ V_{CC} ≤ Max. | - | 0.13* V_{CC} | V |
| I_{IHH} | Three-level Input HIGH Current | Three-level input pins excl. FBF0 | $V_{IN} = V_{CC}$ | - | 200 | µA |
| | | FBF0 | | - | 400 | µA |
| I_{IMM} | Three-level Input MID Current | Three-level input pins excl. FBF0 | $V_{IN} = V_{CC}/2$ | -50 | 50 | µA |
| | | FBF0 | | -100 | 100 | µA |
| I_{ILL} | Three-level Input LOW Current | Three-level input pins excl. FBF0 | $V_{IN} = \text{GND}$ | -200 | - | µA |
| | | FBF0 | | -400 | - | µA |
| LVDIFF Input Pins (FBK[A:B]±, REF[A:B]±) | | | | | | |
| V_{DIFF} | Input Differential Voltage | | | 400 | V_{CC} | mV |
| V_{IHHP} | Highest Input HIGH Voltage | | | 1.0 | V_{CC} | V |
| V_{ILLP} | Lowest Input LOW Voltage | | | GND | $V_{CC} - 0.4$ | V |
| V_{COM} | Common Mode Range (crossing voltage) | | | 0.8 | V_{CC} | V |

Notes:

- Multiple Supplies:** The voltage on any input or I/O pin cannot exceed the power pin during power-up. Power supply sequencing is NOT required.
- These inputs are normally wired to V_{CC} , GND, or left unconnected (actual threshold voltages vary as a percentage of V_{CC}). Internal termination resistors hold the unconnected inputs at $V_{CC}/2$. If these inputs are switched, the function and timing of the outputs may glitch and the PLL may require an additional t_{LOCK} time before all data sheet limits are achieved.

Electrical Characteristics Over the Operating Range (continued)

| Parameter | Description | | Test Conditions | Min. | Max. | Unit |
|--------------------------|--|----------|---|------|------|------|
| Operating Current | | | | | | |
| I _{CCI} | Internal Operating Current | CY7B993V | V _{CC} = Max., f _{MAX} ^[7] | – | 250 | mA |
| | | CY7B994V | | – | 250 | mA |
| I _{CCN} | Output Current Dissipation/Pair ^[8] | CY7B993V | V _{CC} = Max., C _{LOAD} = 25 pF, R _{LOAD} = 50Ω at V _{CC} /2, f _{MAX} | – | 40 | mA |
| | | CY7B994V | | – | 50 | mA |

Capacitance

| Parameter | Description | Test Conditions | Min. | Max. | Unit |
|-----------------|-------------------|--|------|------|------|
| C _{IN} | Input Capacitance | T _A = 25°C, f = 1 MHz, V _{CC} = 3.3V | | 5 | pF |

Switching Characteristics Over the Operating Range^[9, 10, 11, 12, 13]

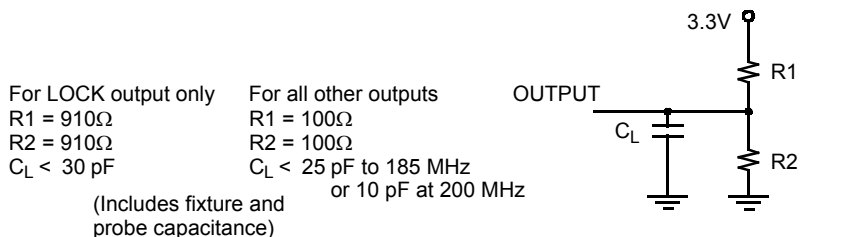
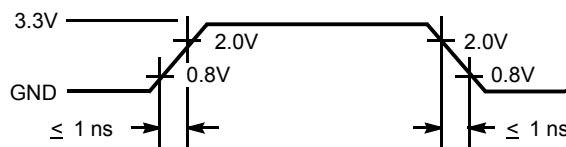
| Parameter | Description | | CY7B993/4V-2 | | | CY7B993/4V-5 | | | Unit |
|----------------------|---|----------|--------------|------|------|--------------|------|------|---------|
| | | | Min. | Typ. | Max. | Min. | Typ. | Max. | |
| f _{in} | Clock Input Frequency | CY7B993V | 12 | – | 100 | 12 | – | 100 | MHz |
| | | CY7B994V | 24 | – | 200 | 24 | – | 200 | MHz |
| f _{out} | Clock Output Frequency | CY7B993V | 12 | – | 100 | 12 | – | 100 | MHz |
| | | CY7B994V | 24 | – | 200 | 24 | – | 200 | MHz |
| t _{SKEWPR} | Matched-Pair Skew ^[14, 15] | | – | – | 200 | – | – | 200 | ps |
| t _{SKEWBNK} | Intrabank Skew ^[14, 15] | | – | – | 200 | – | – | 250 | ps |
| t _{SKEW0} | Output-Output Skew (same frequency and phase, rise to rise, fall to fall) ^[14, 15] | | – | – | 250 | – | – | 550 | ps |
| t _{SKEW1} | Output-Output Skew (same frequency and phase, other banks at different frequency, rise to rise, fall to fall) ^[14, 15] | | – | – | 250 | – | – | 650 | ps |
| t _{SKEW2} | Output-Output Skew (invert to nominal of different banks, compared banks at same frequency, rising edge to falling edge aligned, other banks at same frequency) ^[14, 15] | | – | – | 250 | – | – | 700 | ps |
| t _{SKEW3} | Output-Output Skew (all output configurations outside of t _{SKEW1} and t _{SKEW2}) ^[14, 15] | | – | – | 500 | – | – | 800 | ps |
| t _{SKEWCPR} | Complementary Outputs Skew (crossing to crossing, complementary outputs of the same bank) ^[14, 15, 16, 17] | | – | – | 200 | – | – | 300 | ps |
| t _{CCJ1-3} | Cycle-to-Cycle Jitter (divide by 1 output frequency, FB = divide by 1, 2, 3) | | – | 50 | 150 | – | 50 | 150 | ps Peak |
| t _{CCJ4-12} | Cycle-to-Cycle Jitter (divide by 1 output frequency, FB = divide by 4, 5, 6, 8, 10, 12) | | – | 50 | 100 | – | 50 | 100 | ps Peak |
| t _{PD} | Propagation Delay, REF to FB Rise | | –250 | – | 250 | –500 | – | 500 | ps |

Notes:

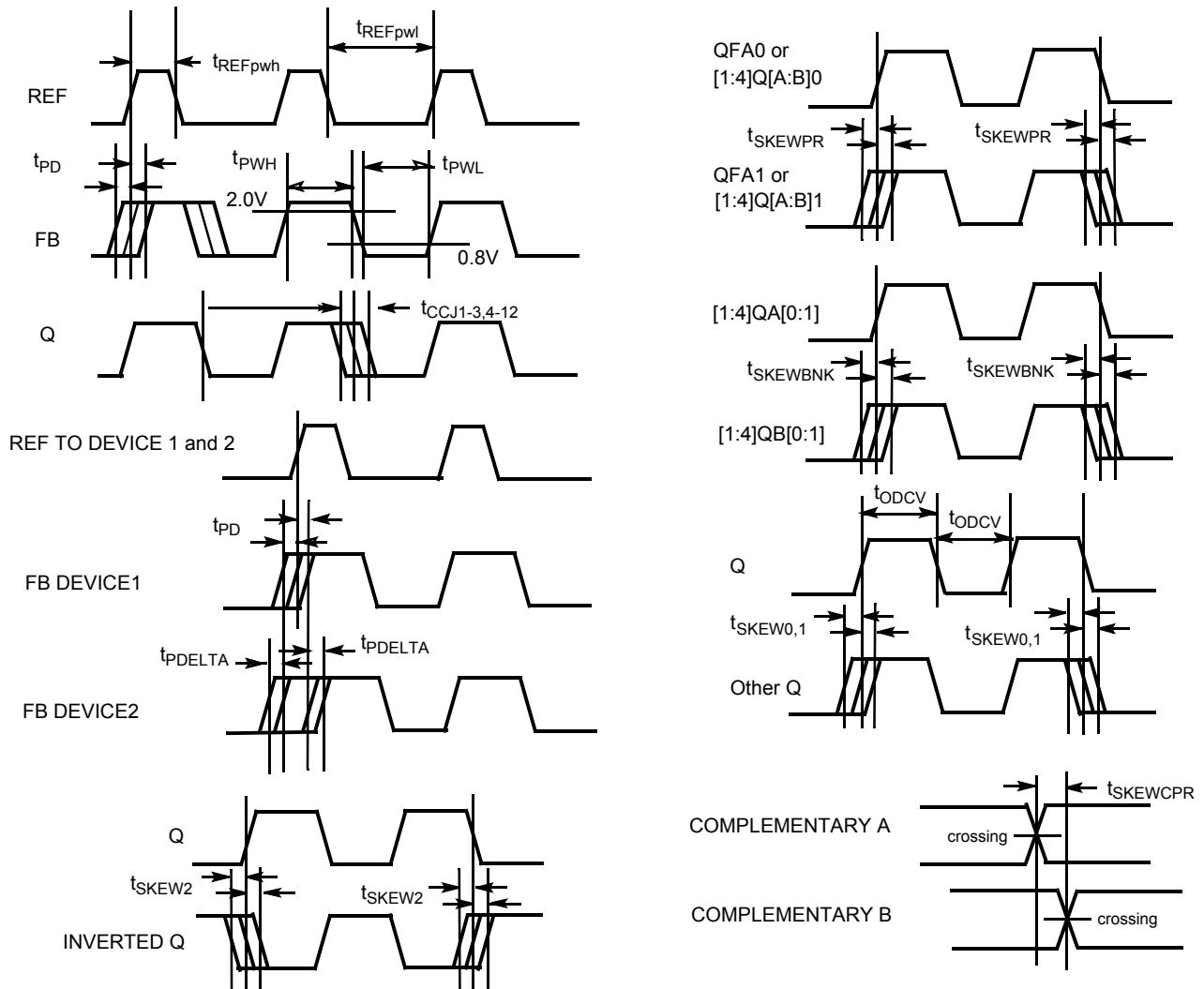
- I_{CCI} measurement is performed with Bank1 and FB Bank configured to run at maximum frequency (f_{NOM} = 100 MHz for CY7B993V, f_{NOM} = 200 MHz for CY7B994V), and all other clock output banks to run at half the maximum frequency. FS and OUTPUT_MODE are asserted to the HIGH state.
- This is dependent upon frequency and number of outputs of a bank being loaded. The value indicates maximum I_{CCN} at maximum frequency and maximum load of 25 pF terminated to 50Ω at V_{CC}/2.
- This is for non-three level inputs.
- Assumes 25-pF max. load capacitance up to 185 MHz. At 200 MHz the max. load is 10 pF.
- Both outputs of pair must be terminated, even if only one is being used.
- Each package must be properly decoupled.
- AC parameters are measured at 1.5V unless otherwise indicated.
- Test Load C_L = 25 pF, terminated to V_{CC}/2 with 50Ω up to 185 MHz and 10-pF load to 200 MHz.
- SKEW is defined as the time between the earliest and the latest output transition among all outputs for which the same phase delay has been selected when all outputs are loaded with 25 pF and properly terminated up to 185 MHz. At 200 MHz the max load is 10 pF.
- Complementary output skews are measured at complementary signal pair intersections.
- Guaranteed by statistical correlation. Tested initially and after any design or process changes that may affect these parameters.

Switching Characteristics Over the Operating Range^[9, 10, 11, 12, 13] (continued)

| Parameter | Description | CY7B993/4V-2 | | | CY7B993/4V-5 | | | Unit |
|--------------------------------|--|--------------|------|-------|--------------|------|-------|------|
| | | Min. | Typ. | Max. | Min. | Typ. | Max. | |
| TTB | Total Timing Budget window (same frequency and phase) ^[17, 18] | – | – | 500 | – | – | 700 | ps |
| t _{PDELTA} | Propagation Delay difference between two devices ^[17] | – | – | 200 | – | – | 200 | ps |
| t _{REFpwh} | REF input (Pulse Width HIGH) ^[19] | 2.0 | – | – | 2.0 | – | – | ns |
| t _{REFpwl} | REF input (Pulse Width LOW) ^[19] | 2.0 | – | – | 2.0 | – | – | ns |
| t _r /t _f | Output Rise/Fall Time ^[20] | 0.15 | – | 2.0 | 0.15 | – | 2.0 | ns |
| t _{LOCK} | PLL Lock Time From Power-up | – | – | 10 | – | – | 10 | ms |
| t _{RELOCK1} | PLL Relock Time (from same frequency, different phase) with Stable Power Supply | – | – | 500 | – | – | 500 | μs |
| t _{RELOCK2} | PLL Relock Time (from different frequency, different phase) with Stable Power Supply ^[21] | – | – | 1000 | – | – | 1000 | μs |
| t _{ODCV} | Output duty cycle deviation from 50% ^[13] | –1.0 | – | 1.0 | –1.0 | – | 1.0 | ns |
| t _{PWH} | Output HIGH time deviation from 50% ^[22] | – | – | 1.5 | – | – | 1.5 | ns |
| t _{PWL} | Output LOW time deviation from 50% ^[22] | – | – | 2.0 | – | – | 2.0 | ns |
| t _{PDEV} | Period deviation when changing from reference to reference ^[23] | – | – | 0.025 | – | – | 0.025 | UI |
| t _{OAZ} | DIS[1:4]/FBDIS HIGH to output high-impedance from ACTIVE ^[14, 24] | 1.0 | – | 10 | 1.0 | – | 10 | ns |
| t _{OAZ} | DIS[1:4]/FBDIS LOW to output ACTIVE from output high-impedance ^[24, 25] | 0.5 | – | 14 | 0.5 | – | 14 | ns |

AC Test Loads and Waveform^[26]

(a) LVTTTL AC Test Load

(b) TTL Input Test Waveform
Notes:

18. TTB is the window between the earliest and the latest output clocks with respect to the input reference clock across variations in output frequency, supply voltage, operating temperature, input clock edge rate, and process. The measurements are taken with the AC test load specified and include output-output skew, cycle-cycle jitter, and dynamic phase error. TTB will be equal to or smaller than the maximum specified value at a given frequency.
19. Tested initially and after any design or process changes that may affect these parameters.
20. Rise and fall times are measured between 2.0V and 0.8V.
21. f_{NOM} must be within the frequency range defined by the same FS state.
22. t_{PWH} is measured at 2.0V. t_{PWL} is measured at 0.8V.
23. UI = Unit Interval. Examples: 1 UI is a full period. 0.1UI is 10% of period.
24. Measured at 0.5V deviation from starting voltage.
25. For t_{OZA} minimum, C_L = 0 pF. For t_{OZA} maximum, C_L = 25 pF to 185 MHz or 10 pF to 200 MHz.
26. These figures are for illustrations only. The actual ATE loads may vary.

AC Timing Diagrams^[13]

Ordering Information

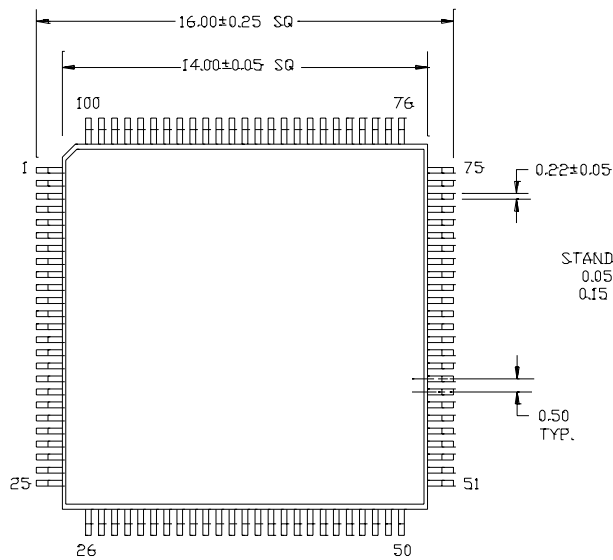
| Propagation Delay (ps) | Max. Speed (MHz) | Ordering Code | Package Type | Operating Range |
|------------------------|------------------|----------------|---|-----------------|
| 250 | 100 | CY7B993V-2AC | 100-lead Thin Quad Flat Pack | Commercial |
| 250 | 100 | CY7B993V-2ACT | 100-lead Thin Quad Flat Pack - Tape and Reel | Commercial |
| 250 | 100 | CY7B993V-2AI | 100-lead Thin Quad Flat Pack | Industrial |
| 250 | 100 | CY7B993V-2AIT | 100-lead Thin Quad Flat Pack - Tape and Reel | Industrial |
| 250 | 200 | CY7B994V-2AC | 100-lead Thin Quad Flat Pack | Commercial |
| 250 | 200 | CY7B994V-2ACT | 100-lead Thin Quad Flat Pack - Tape and Reel | Commercial |
| 250 | 200 | CY7B994V-2BBC | 100-ball Thin Ball Grid Array | Commercial |
| 250 | 200 | CY7B994V-2BBCT | 100-ball Thin Ball Grid Array - Tape and Reel | Commercial |
| 250 | 200 | CY7B994V-2AI | 100-lead Thin Quad Flat Pack | Industrial |
| 250 | 200 | CY7B994V-2AIT | 100-lead Thin Quad Flat Pack - Tape and Reel | Industrial |
| 250 | 200 | CY7B994V-2BBI | 100-ball Thin Ball Grid Array | Industrial |
| 250 | 200 | CY7B994V-2BBIT | 100-ball Thin Ball Grid Array -Tape and Reel | Industrial |

Ordering Information (continued)

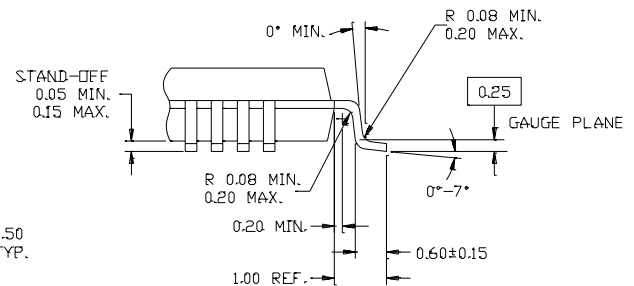
| Propagation Delay (ps) | Max. Speed (MHz) | Ordering Code | Package Type | Operating Range |
|------------------------|------------------|-----------------|---|-----------------|
| 500 | 100 | CY7B993V-5AC | 100-lead Thin Quad Flat Pack | Commercial |
| 500 | 100 | CY7B993V-5ACT | 100-lead Thin Quad Flat Pack - Tape and Reel | Commercial |
| 500 | 100 | CY7B993V-5AI | 100-lead Thin Quad Flat Pack | Industrial |
| 500 | 100 | CY7B993V-5AIT | 100-lead Thin Quad Flat Pack - Tape and Reel | Industrial |
| 500 | 200 | CY7B994V-5AC | 100-lead Thin Quad Flat Pack | Commercial |
| 500 | 200 | CY7B994V-5ACT | 100-lead Thin Quad Flat Pack - Tape and Reel | Commercial |
| 500 | 200 | CY7B994V-5BBC | 100-ball Thin Ball Grid Array | Commercial |
| 500 | 200 | CY7B994V-5BBCT | 100-ball Thin Ball Grid Array - Tape and Reel | Commercial |
| 500 | 200 | CY7B994V-5BBI | 100-ball Thin Ball Grid Array | Industrial |
| 500 | 200 | CY7B994V-5BBIT | 100-ball Thin Ball Grid Array -Tape and Reel | Industrial |
| 500 | 200 | CY7B994V-5AI | 100-lead Thin Quad Flat Pack | Industrial |
| 500 | 200 | CY7B994V-5AIT | 100-lead Thin Quad Flat Pack - Tape and Reel | Industrial |
| Lead-free | | | | |
| 250 | 100 | CY7B993V-2AXC | 100-lead Thin Quad Flat Pack | Commercial |
| 250 | 100 | CY7B993V-2AXCT | 100-lead Thin Quad Flat Pack - Tape and Reel | Commercial |
| 250 | 100 | CY7B993V-2AXI | 100-lead Thin Quad Flat Pack | Industrial |
| 250 | 100 | CY7B993V-2AXIT | 100-lead Thin Quad Flat Pack - Tape and Reel | Industrial |
| 250 | 200 | CY7B994V-2AXC | 100-lead Thin Quad Flat Pack | Commercial |
| 250 | 200 | CY7B994V-2AXCT | 100-lead Thin Quad Flat Pack - Tape and Reel | Commercial |
| 250 | 200 | CY7B994V-2BBXC | 100-ball Thin Ball Grid Array | Commercial |
| 250 | 200 | CY7B994V-2BBXCT | 100-ball Thin Ball Grid Array - Tape and Reel | Commercial |
| 250 | 200 | CY7B994V-2AXI | 100-lead Thin Quad Flat Pack | Industrial |
| 250 | 200 | CY7B994V-2AXIT | 100-lead Thin Quad Flat Pack - Tape and Reel | Industrial |
| 250 | 200 | CY7B994V-2BBXI | 100-ball Thin Ball Grid Array | Industrial |
| 250 | 200 | CY7B994V-2BBXIT | 100-ball Thin Ball Grid Array -Tape and Reel | Industrial |
| 500 | 100 | CY7B993V-5AXC | 100-lead Thin Quad Flat Pack | Commercial |
| 500 | 100 | CY7B993V-5AXCT | 100-lead Thin Quad Flat Pack - Tape and Reel | Commercial |
| 500 | 100 | CY7B993V-5AXI | 100-lead Thin Quad Flat Pack | Industrial |
| 500 | 100 | CY7B993V-5AXIT | 100-lead Thin Quad Flat Pack - Tape and Reel | Industrial |
| 500 | 200 | CY7B994V-5AXC | 100-lead Thin Quad Flat Pack | Commercial |
| 500 | 200 | CY7B994V-5AXCT | 100-lead Thin Quad Flat Pack - Tape and Reel | Commercial |
| 500 | 200 | CY7B994V-5BBXC | 100-ball Thin Ball Grid Array | Commercial |
| 500 | 200 | CY7B994V-5BBXCT | 100-ball Thin Ball Grid Array -Tape and Reel | Commercial |
| 500 | 200 | CY7B994V-5BBXI | 100-ball Thin Ball Grid Array | Industrial |
| 500 | 200 | CY7B994V-5BBXIT | 100-ball Thin Ball Grid Array - Tape and Reel | Industrial |
| 500 | 200 | CY7B994V-5AXI | 100-lead Thin Quad Flat Pack | Industrial |
| 500 | 200 | CY7B994V-5AXIT | 100-lead Thin Quad Flat Pack - Tape and Reel | Industrial |

Package Diagrams

100-pin Thin Plastic Quad Flat Pack (TQFP) A100

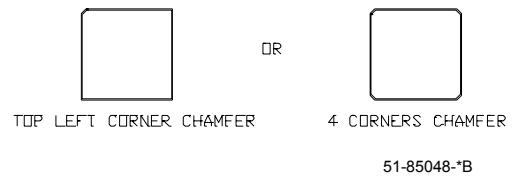


DIMENSIONS ARE IN MILLIMETERS.

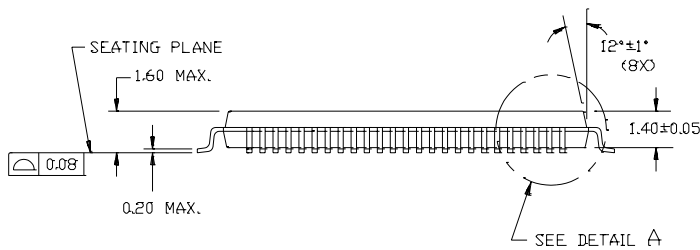


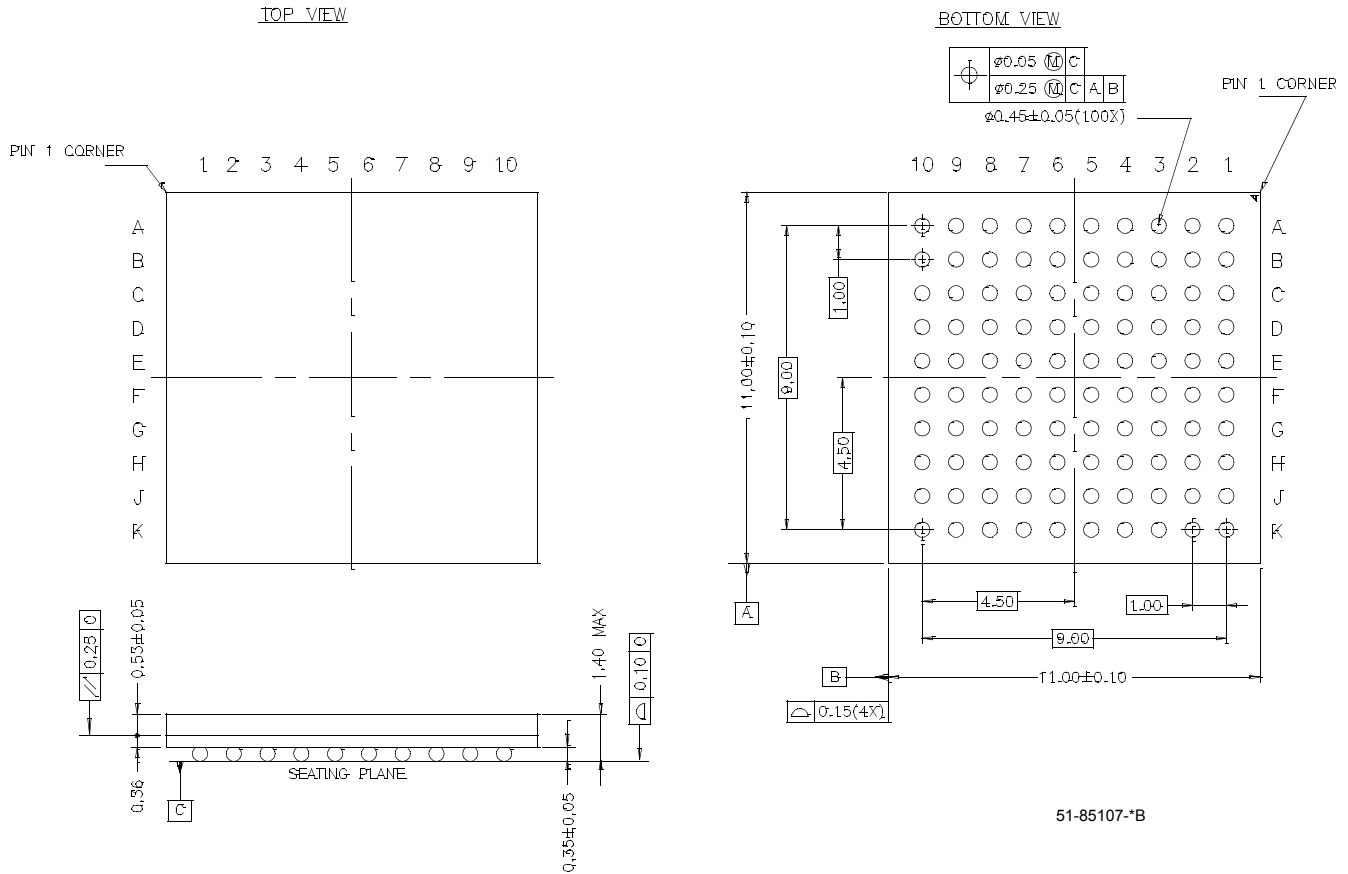
DETAIL A

NOTE: PKG. CAN HAVE



51-85048-B



Package Diagrams (continued)
100-ball Thin Ball Grid Array (11 x 11 x 1.4 mm) BB100


RoboClock is a registered trademark, and TTB and Total Timing Budget are trademarks, of Cypress Semiconductor. All product and company names mentioned in this document are the trademarks of their respective holders.

Document History Page

| Document Title: RoboClock® CY7B994V/CY7B993V High-speed Multi-phase PLL Clock Buffer | | | | |
|--|---------|------------|-----------------|--|
| Document Number: 38-07127 | | | | |
| REV. | ECN NO. | Issue Date | Orig. of Change | Description of Change |
| ** | 109957 | 12/16/01 | SZV | Changed from Spec number: 38-00747 to 38-07127 |
| *A | 114376 | 05/06/02 | CTK | Added three industrial packages |
| *B | 116570 | 09/04/02 | HWT | Added TTB Features |
| *C | 122794 | 12/14/02 | RBI | Power-up requirements to operating conditions information |
| *D | 123694 | 03/04/03 | RGL | Added min. F _{out} value of 12 MHz for CY7B993V and 24 MHz for CY7B994V to switching characteristics table Corrected prop delay limit parameter from (t _{PDSL,M,H}) to t _{PD} in the Lock Detect Output Description paragraph |
| *E | 128462 | 07/29/03 | RGL | Added clock input frequency (f _{in}) specifications in the switching characteristics table |
| *F | 391560 | See ECN | RGL | Added Lead-free devices Added typical values for jitter |