

Quad Line Driver

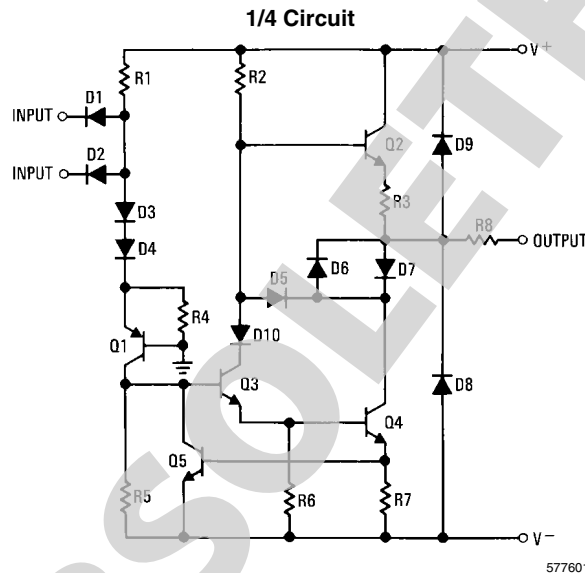
General Description

The DS1488 is a quad line driver which converts standard TTL input logic levels through one stage of inversion to output levels which meet EIA Standard RS-232D and CCITT Recommendation V.24.

Features

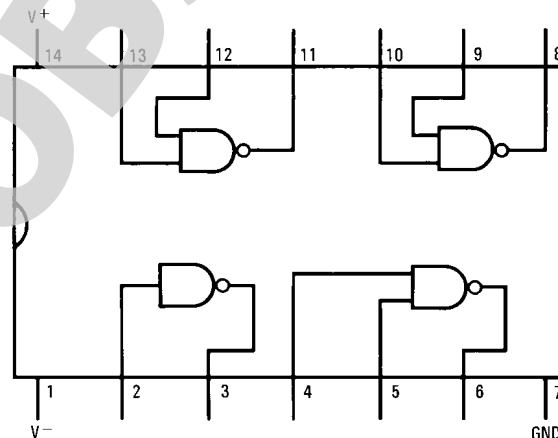
- Current limited output: ± 10 mA typ
- Power-off source impedance: 300Ω min
- Simple slew rate control with external capacitor
- Flexible operating supply range
- Inputs are TTL/LS compatible

Schematic and Connection Diagrams



577601

Small-Outline or Dual-In-Line Package



577602

Top View

Order Number DS1488M, DS1488MX or DS1488N
See NS Package Number M14A or N14A

Absolute Maximum Ratings (Note 2)

If Military/Aerospace specified devices are required, please contact the National Semiconductor Sales Office/Distributors for availability and specifications.

Supply Voltage	
V+	+15V
V-	-15V
Input Voltage (V_{IN})	$-15V \leq V_{IN} \leq 7.0V$
Output Voltage	$\pm 15V$

Operating Temperature Range	0°C to +75°C
Storage Temperature Range	-65°C to +150°C
Maximum Power Dissipation (Note 1) at 25°C	
Molded DIP Package	1280 mW
SO Package	974 mW
Lead Temperature (Soldering, 4 sec.)	260°C

Note 1: Derate molded DIP package 10.2 mW/°C above 25°C; derate SO package 7.8 mW/°C above 25°C.

Electrical Characteristics (Note 3, Note 4)

$V_{CC+} = 9V$, $V_{CC-} = -9V$ unless otherwise specified

Symbol	Parameter	Conditions	Min	Typ	Max	Units	
I_{IL}	Logical "0" Input Current	$V_{IN} = 0V$		-0.8	-1.3	mA	
I_{IH}	Logical "1" Input Current	$V_{IN} = +5.0V$		0.005	10.0	μA	
V_{OH}	High Level Output Voltage	$R_L = 3.0 k\Omega$, $V_{IN} = 0.8V$	$V^+ = 9.0V$, $V^- = -9.0V$	6.0	7.1	V	
			$V^+ = 13.2V$, $V^- = -13.2V$	9.0	10.7	V	
V_{OL}	Low Level Output Voltage	$R_L = 3.0 k\Omega$, $V_{IN} = 1.9V$	$V^+ = 9.0V$, $V^- = -9.0V$	-6.0	7.0	V	
			$V^+ = 13.2V$, $V^- = -13.2V$	-9.0	-10.6	V	
I_{OS+}	High Level Output Short-Circuit Current	$V_{OUT} = 0V$, $V_{IN} = 0.8V$	-6.0	-10.0	-12.0	mA	
I_{OS-}	Low Level Output Short-Circuit Current	$V_{OUT} = 0V$, $V_{IN} = 1.9V$	6.0	10.0	12.0	mA	
R_{OUT}	Output Resistance	$V^+ = V^- = 0V$, $V_{OUT} = \pm 2V$	300			Ω	
I_{CC+}	Positive Supply Current (Output Open)	$V_{IN} = 1.9V$	$V^+ = 9.0V$, $V^- = -9.0V$		11.6	20.0	mA
			$V^+ = 12V$, $V^- = -12V$		15.7	25.0	mA
			$V^+ = 15V$, $V^- = -15V$		19.4	34.0	mA
		$V_{IN} = 0.8V$	$V^+ = 9.0V$, $V^- = -9.0V$		3.4	6.0	mA
			$V^+ = 12V$, $V^- = -12V$		4.1	7.0	mA
			$V^+ = 15V$, $V^- = -15V$		9.1	12.0	mA
I_{CC-}	Negative Supply Current (Output Open)	$V_{IN} = 1.9V$	$V^+ = 9.0V$, $V^- = -9.0V$		-10.8	-17.0	mA
			$V^+ = 12V$, $V^- = -12V$		-14.6	-23.0	mA
			$V^+ = 15V$, $V^- = -15V$		-18.3	-34.0	mA
		$V_{IN} = 0.8V$	$V^+ = 9.0V$, $V^- = -9.0V$		-0.001	-0.100	mA
			$V^+ = 12V$, $V^- = -12V$		-0.001	-0.100	mA
			$V^+ = 15V$, $V^- = -15V$		-0.01	-2.5	mA
P_d	Power Dissipation	$V^+ = 9.0V$, $V^- = -9.0V$		252	333	mW	
		$V^+ = 12V$, $V^- = -12V$		444	576	mW	

Switching Characteristics

($V_{CC} = 9V$, $V_{EE} = -9V$, $T_A = 25^\circ C$)

Symbol	Parameter	Conditions	Min	Typ	Max	Units
t_{pd1}	Propagation Delay to a Logical "1"	$R_L = 3.0 k\Omega$, $C_L = 15 pF$, $T_A = 25^\circ C$		187	350	ns
t_{pd0}	Propagation Delay to a Logical "0"	$R_L = 3.0 k\Omega$, $C_L = 15 pF$, $T_A = 25^\circ C$		45	175	ns
t_r	Rise Time	$R_L = 3.0 k\Omega$, $C_L = 15 pF$, $T_A = 25^\circ C$		63	100	ns
t_f	Fall Time	$R_L = 3.0 k\Omega$, $C_L = 15 pF$, $T_A = 25^\circ C$		33	75	ns

Note 2: "Absolute Maximum Ratings" are those values beyond which the safety of the device cannot be guaranteed. Except for "Operating Temperature Range" they are not meant to imply that the devices should be operated at these limits. The table of "Electrical Characteristics" provides conditions for actual device operation.

Note 3: Unless otherwise specified min/max limits apply across the 0°C to +75°C temperature range for the DS1488.

Note 4: All currents into device pins shown as positive, out of device pins as negative, all voltages referenced to ground unless otherwise noted. All values shown as max or min on absolute value basis.

Applications

By connecting a capacitor to each driver output the slew rate can be controlled utilizing the output current limiting characteristics of the DS1488. For a set slew rate the appropriate capacitor value may be calculated using the following relationship

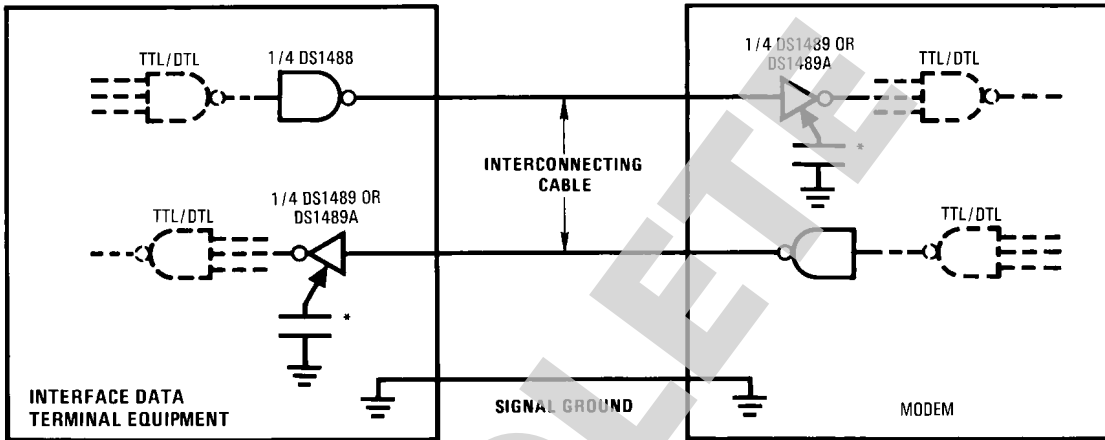
$$C = I_{SC} (\Delta T / \Delta V)$$

where C is the required capacitor, I_{SC} is the short circuit current value, and $\Delta V / \Delta T$ is the slew rate.

RS-232C specifies that the output slew rate must not exceed 30V per microsecond. Using the worst case output short circuit current of 12 mA in the above equation, calculations result in a required capacitor of 400 pF connected to each output. See Typical Performance Characteristics.

Typical Applications

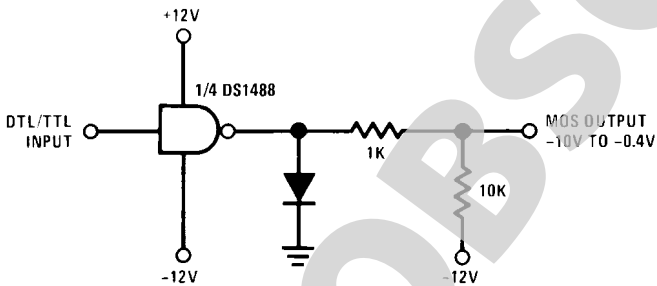
RS-232C Data Transmission



577603

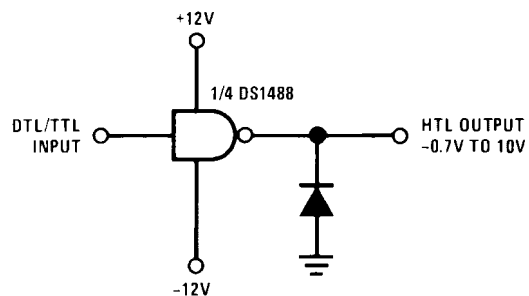
Note 5: Optional for noise filtering

DTL/TTL-to-MOS Translator



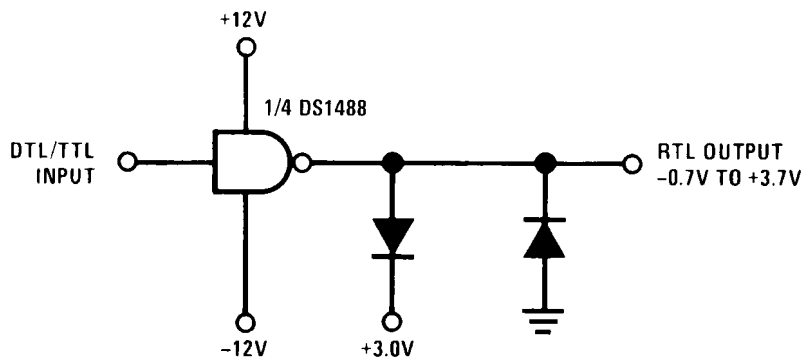
577604

DTL/TTL-to-HTL Translator



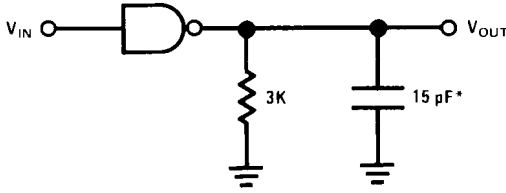
577605

DTL/TTL-to-RTL Translator



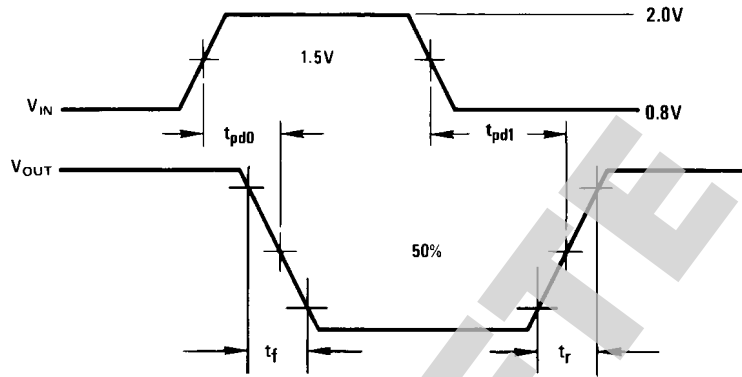
577606

AC Load Circuit and Switching Time Waveforms



* C_L includes probe and jig capacitance.

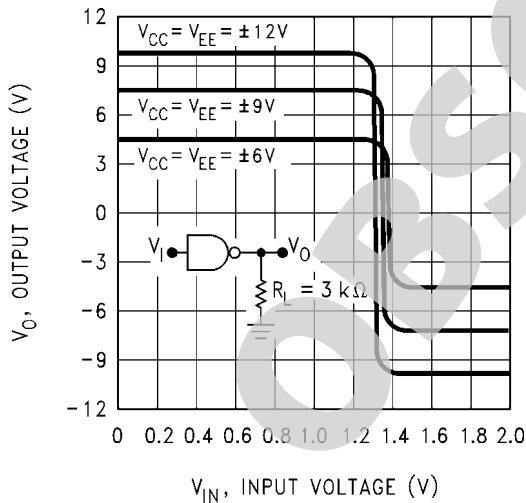
577607



577608

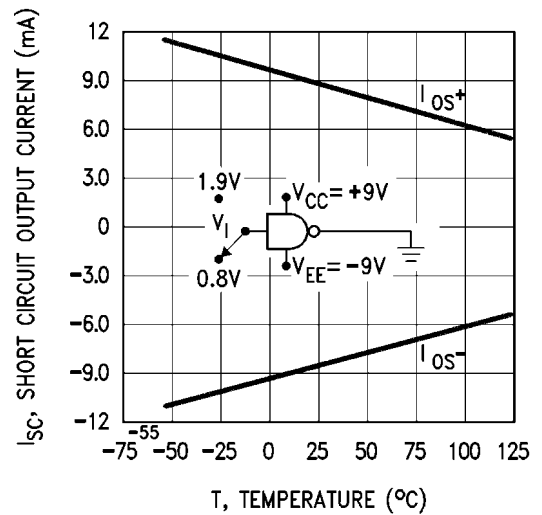
t_f and t_r are measured between 10% and 90% of the output waveform.

Typical Performance Characteristics $T_A = +25^\circ\text{C}$ unless otherwise noted



577609

FIGURE 1. Transfer Characteristics vs Power Supply Voltage



577610

FIGURE 2. Short-Circuit Output Current vs Temperature

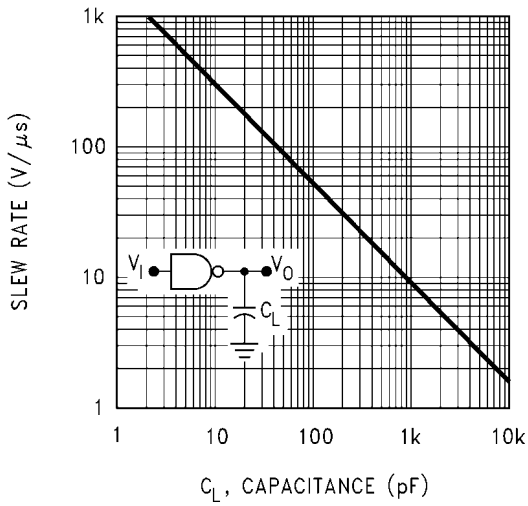


FIGURE 3. Output Slew Rate vs Load Capacitance

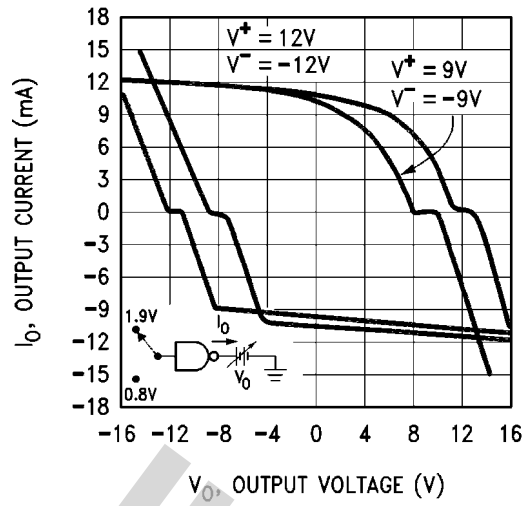
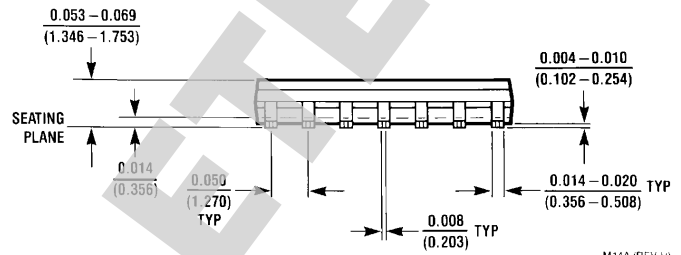
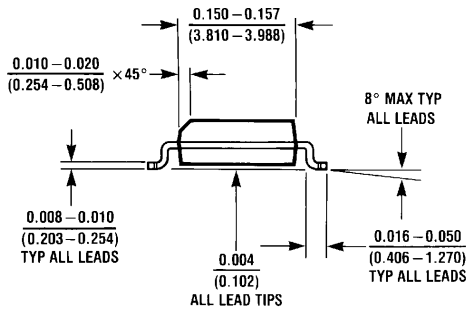
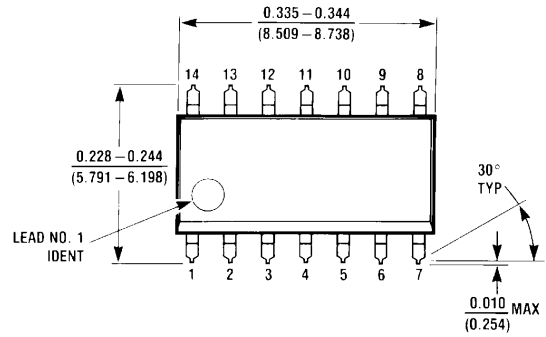


FIGURE 4. Output Voltage and Current-Limiting Characteristics

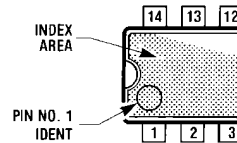
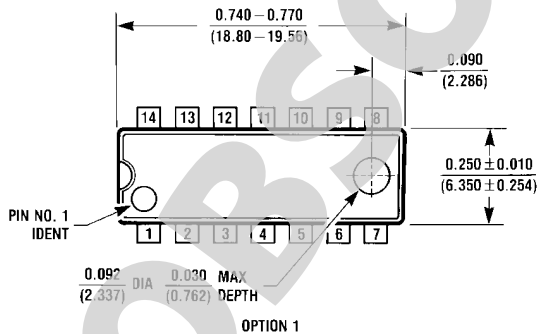
OBSOLETE

Physical Dimensions inches (millimeters) unless otherwise noted



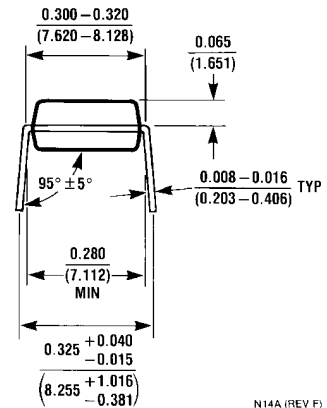
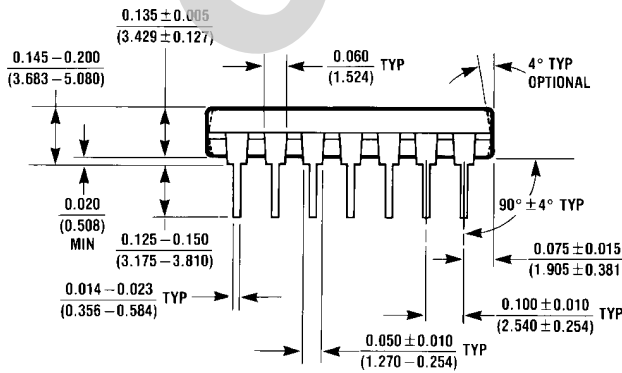
M14A (REV H)

SO Package (M)
Order Number DS1488M or DS1488MX
NS Package Number M14A



OPTION 1

OPTION 2



N14A (REV F)

Molded Dual-In-Line Package (N)
Order Number DS1488N
NS Package Number N14A

OBSOLETE

Notes

For more National Semiconductor product information and proven design tools, visit the following Web sites at:
www.national.com

Products		Design Support	
Amplifiers	www.national.com/amplifiers	WEBENCH® Tools	www.national.com/webench
Audio	www.national.com/audio	App Notes	www.national.com/appnotes
Clock and Timing	www.national.com/timing	Reference Designs	www.national.com/refdesigns
Data Converters	www.national.com/adc	Samples	www.national.com/samples
Interface	www.national.com/interface	Eval Boards	www.national.com/evalboards
LVDS	www.national.com/lvds	Packaging	www.national.com/packaging
Power Management	www.national.com/power	Green Compliance	www.national.com/quality/green
Switching Regulators	www.national.com/switchers	Distributors	www.national.com/contacts
LDOs	www.national.com/ldo	Quality and Reliability	www.national.com/quality
LED Lighting	www.national.com/led	Feedback/Support	www.national.com/feedback
Voltage References	www.national.com/vref	Design Made Easy	www.national.com/easy
PowerWise® Solutions	www.national.com/powerwise	Applications & Markets	www.national.com/solutions
Serial Digital Interface (SDI)	www.national.com/sdi	Mil/Aero	www.national.com/milaero
Temperature Sensors	www.national.com/tempensors	SolarMagic™	www.national.com/solarmagic
PLL/VCO	www.national.com/wireless	PowerWise® Design University	www.national.com/training

THE CONTENTS OF THIS DOCUMENT ARE PROVIDED IN CONNECTION WITH NATIONAL SEMICONDUCTOR CORPORATION ("NATIONAL") PRODUCTS. NATIONAL MAKES NO REPRESENTATIONS OR WARRANTIES WITH RESPECT TO THE ACCURACY OR COMPLETENESS OF THE CONTENTS OF THIS PUBLICATION AND RESERVES THE RIGHT TO MAKE CHANGES TO SPECIFICATIONS AND PRODUCT DESCRIPTIONS AT ANY TIME WITHOUT NOTICE. NO LICENSE, WHETHER EXPRESS, IMPLIED, ARISING BY ESTOPPEL OR OTHERWISE, TO ANY INTELLECTUAL PROPERTY RIGHTS IS GRANTED BY THIS DOCUMENT.

TESTING AND OTHER QUALITY CONTROLS ARE USED TO THE EXTENT NATIONAL DEEMS NECESSARY TO SUPPORT NATIONAL'S PRODUCT WARRANTY. EXCEPT WHERE MANDATED BY GOVERNMENT REQUIREMENTS, TESTING OF ALL PARAMETERS OF EACH PRODUCT IS NOT NECESSARILY PERFORMED. NATIONAL ASSUMES NO LIABILITY FOR APPLICATIONS ASSISTANCE OR BUYER PRODUCT DESIGN. BUYERS ARE RESPONSIBLE FOR THEIR PRODUCTS AND APPLICATIONS USING NATIONAL COMPONENTS. PRIOR TO USING OR DISTRIBUTING ANY PRODUCTS THAT INCLUDE NATIONAL COMPONENTS, BUYERS SHOULD PROVIDE ADEQUATE DESIGN, TESTING AND OPERATING SAFEGUARDS.

EXCEPT AS PROVIDED IN NATIONAL'S TERMS AND CONDITIONS OF SALE FOR SUCH PRODUCTS, NATIONAL ASSUMES NO LIABILITY WHATSOEVER, AND NATIONAL DISCLAIMS ANY EXPRESS OR IMPLIED WARRANTY RELATING TO THE SALE AND/OR USE OF NATIONAL PRODUCTS INCLUDING LIABILITY OR WARRANTIES RELATING TO FITNESS FOR A PARTICULAR PURPOSE, MERCHANTABILITY, OR INFRINGEMENT OF ANY PATENT, COPYRIGHT OR OTHER INTELLECTUAL PROPERTY RIGHT.

LIFE SUPPORT POLICY


NATIONAL'S PRODUCTS ARE NOT AUTHORIZED FOR USE AS CRITICAL COMPONENTS IN LIFE SUPPORT DEVICES OR SYSTEMS WITHOUT THE EXPRESS PRIOR WRITTEN APPROVAL OF THE CHIEF EXECUTIVE OFFICER AND GENERAL COUNSEL OF NATIONAL SEMICONDUCTOR CORPORATION. As used herein:

Life support devices or systems are devices which (a) are intended for surgical implant into the body, or (b) support or sustain life and whose failure to perform when properly used in accordance with instructions for use provided in the labeling can be reasonably expected to result in a significant injury to the user. A critical component is any component in a life support device or system whose failure to perform can be reasonably expected to cause the failure of the life support device or system or to affect its safety or effectiveness.

National Semiconductor and the National Semiconductor logo are registered trademarks of National Semiconductor Corporation. All other brand or product names may be trademarks or registered trademarks of their respective holders.

Copyright© 2010 National Semiconductor Corporation

For the most current product information visit us at www.national.com

 **National Semiconductor Americas Technical Support Center**
 Email: support@nsc.com
 Tel: 1-800-272-9959

National Semiconductor Europe Technical Support Center
 Email: europe.support@nsc.com

National Semiconductor Asia Pacific Technical Support Center
 Email: ap.support@nsc.com

National Semiconductor Japan Technical Support Center
 Email: jpn.feedback@nsc.com