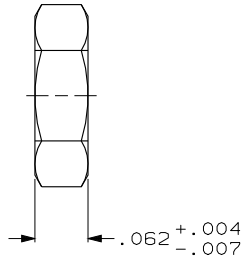
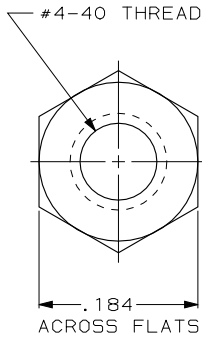


DRAWING MADE IN THIRD ANGLE PROJECTION

THIS DRAWING IS UNPUBLISHED. RELEASED FOR PUBLICATION, 19 .
 © COPYRIGHT 19 BY AMP INCORPORATED, HARRISBURG, PA. ALL INTERNATIONAL RIGHTS
 RESERVED. AMP PRODUCTS MAY BE COVERED BY U.S. AND FOREIGN PATENTS AND/OR PATENTS PENDING.

MOD	LOC	DIST	P	F	ZONE	LTR	DESCRIPTION	DATE	APPROVED
8	BD	39				A	REV & REDRAWN ECN-1849	-	JW
						B	REVISED ECN-BD2480	11/23/88	-
						C	REV PER ECN BD4231	09/06/90	-



- ① ZINC PLATED PER ASTM B633, TYPE II, CLASS SC1, (.000197-.000400), YELLOW CHROMATE.
- ② ZINC PLATED PER ASTM B633, TYPE III, CLASS SC1, (.000197-.000400), CLEAR CHROMATE.

②	205821-3
①	205821-2
FINISH	PART NO

UNLESS OTHERWISE SPECIFIED DIMENSIONS ARE IN INCHES TOLERANCES ON: 2 PL DEC ± - 3 PL DEC ± .005 ANGLES ± -		DR 4-28-87 C. RICHARD	AMP INCORPORATED Harrisburg, Pa. 17105	
MATERIAL	COLD ROLLED STEEL	CHK 5-4-87 S. WELDON	NAME	
FINISH	SEE TABLE	APPD 5-4-87 M. PETERSON	#4-40 HEX NUT, AMPLIMITE®	
		APPD 5-4-87 V. KUMAR	SIZE	FSCM NO
		PRODUCT SPEC	B	00779
		APPLICATION SPEC	SCALE	10:1
		WEIGHT	DRAWING NO	205821
			SHEET	1 OF 1

AMP 1470-15 REV 10-84

CUSTOMER DRAWING

06 SEP. 1990 17:41:05 AMP10841026B-DT4023-JJ-AMPLIMITE-HJ-HARDWARE