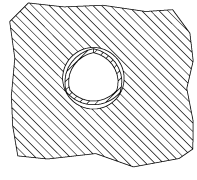
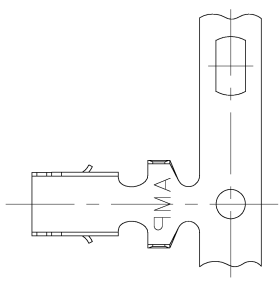
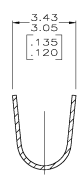
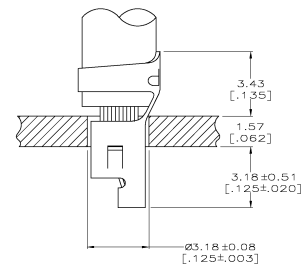
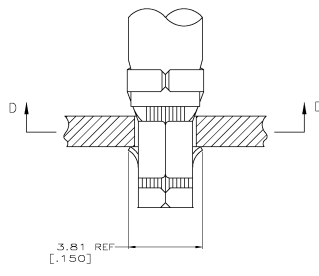
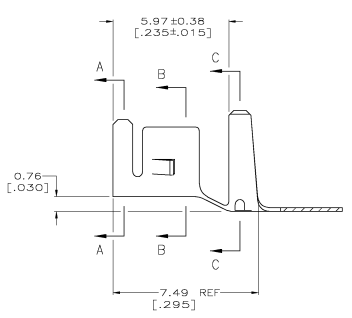


REV	DATE	DESCRIPTION	BY	CHK	APP
CM	00				
N		REV PER EEN 0038-0422-03	ZAN/003	SC	JE

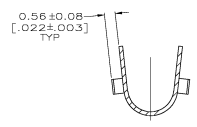


SECTION D-D

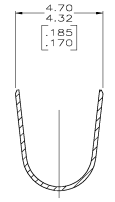
1. PARTS COMPLY WITH AMP SOLDERABILITY SPEC 109-11-3.
2. Δ 0.0050B [.000200] MIN BRIGHT TIN-LEAD.
3. WIRE RANGE: 0.80 - 2.0 mm² [18 - 14 AWG].
4. INSULATION RANGE: 2.29 - 3.81 [.090 - .150] DIA.
5. DIMENSIONS IN BRACKETS ARE IN INCHES.
6. Δ 0.0050B [.000200] MIN BRIGHT TIN.



SECTION A-A



SECTION B-B



SECTION C-C



Δ	3-770060-1
Δ	770060-1
FINISH	PART NO.

THIS DRAWING IS A CONTROLLED DOCUMENT.		BY CARPENTER ZAN/003	DATE	00/00/00	REV	00
DIMENSIONS:		BY ELLIS ZAN/003	DATE	00/00/00	REV	00
INCHES		BY ELLIS ZAN/003	DATE	00/00/00	REV	00
TOLERANCES UNLESS OTHERWISE SPECIFIED:						
D DIA	± .010					
F DIA	± .015					
H DIA	± .010					
K DIA	± .010					
FINISH						
INSULATION						
WEIGHT						
REVISIONS	DATE	DESCRIPTION	BY	CHK	APP	
0-108 [A078] PH BRZ						
CUSTOMER DRAWING		SEE DATE CODE DRAWING NO	A1 00779 (C) 770060		RESTRICTED TO	
		SCALE: 1:1		REV	N	