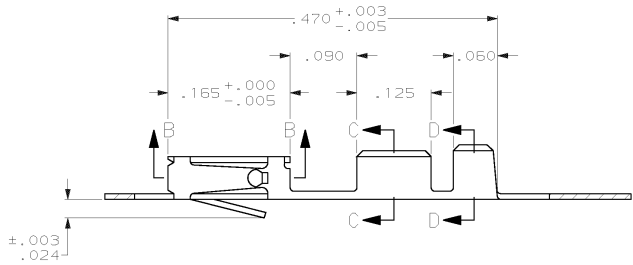
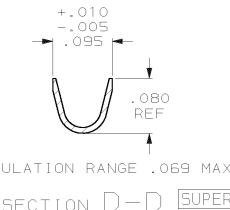
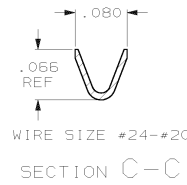
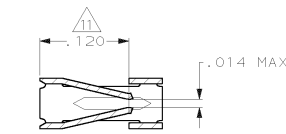
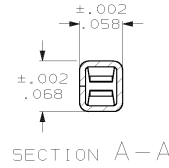
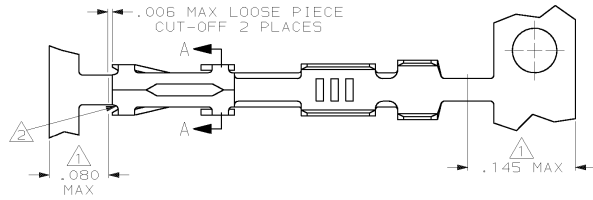


DRAWING MADE IN THIRD ANGLE PROJECTION

THIS DRAWING IS UNPUBLISHED. RELEASED FOR PUBLICATION
 © COPYRIGHT 19 BY AMP INCORPORATED, HARRISBURG, PA. ALL INTERNATIONAL RIGHTS RESERVED. AMP PRODUCTS MAY BE COVERED BY U.S. AND FOREIGN PATENTS AND/OR PATENTS PENDING.

| LOC AD | DIST | P | F | ZONE | LTR | DESCRIPTION | DATE | APPROVED |
|--------|------|---|---|------|-----|-----------------------------|-------------|----------|
| | 39 | | | | T | REVISED AND REDRAWN ECN 893 | - | |
| | | | | | U | REVISED ECN 950 | LM 2-7-86 | JLG |
| | | | | | U1 | REVISED ECN 1041 | HM 5-1-86 | JLG |
| | | | | | U2 | REVISED ECN 1041 | 7-7-86 | |
| | | | | | U3 | OBSOLETE ECN 1821 | LDR 2-22-88 | |
| | | | | | V | REV ECN AR2029 AR2120 | DC 9-27-88 | |
| | | | | | W | REV LOC & DIST AD-4171 | 3-90 | BF |
| | | | | | Y | SUPSD PER 0010-1000-93 | 1-94 | PS |
| | | | | | Z | OBS -16 PER 0010-1863-93 | 1-94 | PS |
| | | | | | AA | OBS -21 PER 0010-0591-96 | 310EC96 | JH |
| | | | | | AB | OBS -21 PER 0310-0169-96 | 310EC96 | JH |
| | | | | | AC | REV PER 0310-0030-98 | 07/30/98 | ECC |
| | | | | | AD | REV PER 063C-0266-00 | 23JUN00 | DS |



- △ GOLD PLATING IS NOT REQUIRED IN THIS AREA.
- △ CUT-OUTS ON THE BOX ARE AT MANUFACTURERS OPTION.
- △ THIS TERMINAL IS REELED FOR THE STANDARD APPLICATOR.
- △ THIS TERMINAL IS REELED FOR THE MINI APPLICATOR.
- △ .000030 GOLD OVER .000050 NICKEL.
- △ .000030 GOLD ON THE CONTACT AREA, GOLD FLASH ON THE REMAINDER ALL OVER .000050 NICKEL.
- △ PREPLATED: (HALT).000078-.000158 BRIGHT TIN
- △ .000050 GOLD OVER .000050 NICKEL.
- △ .000015 GOLD ON THE CONTACT AREA, GOLD FLASH ON THE REMAINDER ALL OVER .000050 NICKEL.
- △ .000050 GOLD ON THE CONTACT AREA, GOLD FLASH ON THE REMAINDER ALL OVER .000050 NICKEL.
- △ POINT OF MEASUREMENT FOR PLATING THICKNESS (INSIDE BEAMS).
- △ .000015 GOLD IN CONTACT AREA, .000050 NICKEL ON ENTIRE TERMINAL
- △ OBSOLETE PART NUMBER.

| | | | | | | | | |
|---|---|---|---|---------|----|----|-----------|----|
| △ | △ | △ | △ | △ | -7 | 2- | △ | -0 |
| △ | △ | △ | △ | △ | -7 | 1- | 85969-9 | |
| △ | △ | △ | △ | △ | -6 | 1- | △ | -8 |
| △ | △ | △ | △ | △ | -6 | 1- | △ | -7 |
| △ | △ | △ | △ | 86016-4 | | | 1-85969-0 | |
| △ | △ | △ | △ | 86016-3 | | | 85969-9 | |
| △ | △ | △ | △ | 86016-2 | | | 85969-8 | |
| △ | △ | △ | △ | 86016-1 | | | 85969-7 | |
| △ | △ | △ | △ | 86016-5 | | | 85969-6 | |
| △ | △ | △ | △ | 86016-5 | | | △ | -5 |
| △ | △ | △ | △ | 86016-4 | | | 85969-4 | |
| △ | △ | △ | △ | 86016-3 | | | △ | -3 |
| △ | △ | △ | △ | 86016-2 | | | 85969-2 | |
| △ | △ | △ | △ | 86016-1 | | | 85969-1 | |

| REMARKS | FINISH | LOOSE PIECE PART NUMBER | PART NUMBER |
|--|--------|---|---------------|
| AMP INCORPORATED Harrisburg, Pa. 17105 | | | |
| NAME CONTACT, MOD IV, RECEPTACLE, CRIMP SNAP-IN | | | |
| MATERIAL: BERYLLIUM COPPER, .008 THICK | | SIZE C | FSCM NO 00779 |
| FINISH: SEE TABLE | | DRAWING NO 85969 | SHEET 1 - 1 |
| UNLESS OTHERWISE SPECIFIED DIMENSIONS ARE IN INCHES TOLERANCES ON : 2 PL DEC ± .005 3 PL DEC ± .005 ANGLES ± | | DR 12-10-85 L.D. RINGLEY CHK 12-16-85 J.L. GESFORD APPD 12-16-85 J.L. GESFORD | SCALE NT5 |
| APPD 12-16-85 CLIFFORD LINDGREN PRODUCT SPEC 108-25,020 APPLICATION SPEC 114-25,003 | | WEIGHT - | |

AMP 1471-7 REV 10-84

23-JUN-00 13:13:17 amp33743 /home/amp33743/edmod

CUSTOMER DRAWING