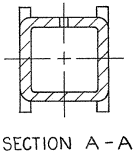
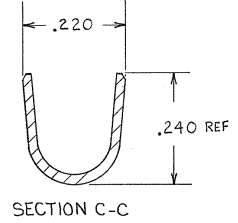
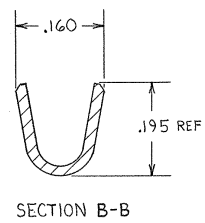
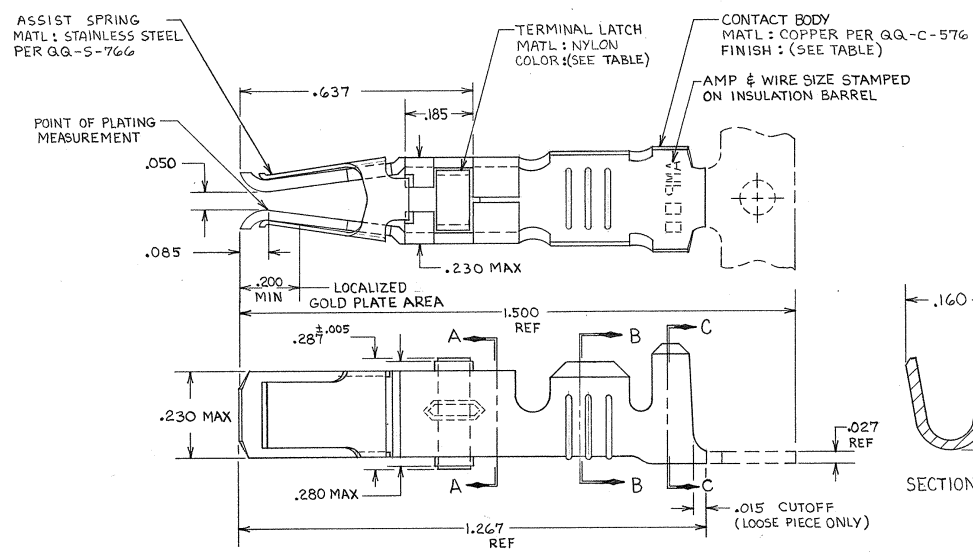


DRAWING MADE IN THIRD ANGLE PROJECTION

THIS DRAWING IS UNPUBLISHED. RELEASED FOR PUBLICATION 19

© COPYRIGHT 19 BY AMP INCORPORATED, HARRISBURG, PA. ALL INTERNATIONAL RIGHTS RESERVED. AMP PRODUCTS MAY BE COVERED BY U.S. AND FOREIGN PATENTS AND/OR PATENTS PENDING.

REVISIONS						
P	F	ZONE	LTR	DESCRIPTION	DATE	APPROVED
✓	✓		D	REWORK & REVISED PER ECN R-1951	9-25-85	PER GIB
✓	✓		E	OBSOLETED -3, -4, & 1-0 1R-2760	3-4-81	506 GIB
			F	REV PER 003D-269-02	CT	5-03 1 DHE



- ▲ REELED FOR USE WITH STANDARD APPLICATORS.
- ▲ REELED FOR USE WITH HEAVY DUTY MINI-APPLICATORS.
- ▲ PLATED WITH .000100 MIN SILVER PER QQ-S-365.
- ▲ PLATED WITH .000015 MIN GOLD PER MIL-G-45204 IN THE LOCALIZED GOLD PLATE AREA, GOLD FLASH ON THE REMAINDER, OVER .000030 MIN NICKEL PER QQ-N-290.
- ▲ PLATED WITH .000030 MIN GOLD PER MIL-G-45204 IN THE LOCALIZED GOLD PLATE AREA, GOLD FLASH ON THE REMAINDER, OVER .000030 MIN NICKEL PER QQ-N-290.
- ▲ PLATED WITH .000050 MIN 93-7% TIN-LEAD ALLOY OVER .000030 MIN NICKEL PER QQ-N-290.
- 7. WIRE RANGE = 12-16 AWG.
- 8. INSULATION RANGE = .140-.165 DIA.

▲ PLATED TIN (NO LEAD) .000050 MIN THK PER ASTM-B-595 OVER NICKEL .000030 MIN THK PER QQ-N-290.

TERMINAL LATCH COLOR	FINISH	LOOSE PIECE PART NO.	STRIP PART NO.
BLACK	▲	2-66740-1	2-66740-0
BLACK	▲	2-66740-1	1-66740-9
BLACK	▲	66740-8	1-66740-2
BLACK	▲	66740-6	1-66740-1
BLACK	▲	OBSOLETE	1-66740-0
NATURAL	▲	66740-2	66740-9
BLACK	▲	66740-8	66740-7
BLACK	▲	66740-6	66740-5
BLACK	▲	OBSOLETE	66740-3
NATURAL	▲	66740-2	66740-1

UNLESS OTHERWISE SPECIFIED DIMENSIONS ARE IN INCHES.		CONTRACT NO.		AMP INCORPORATED Harrisburg, Pa. 17105	
TOLERANCES ON: DECIMALS ±.010 ANGLES		DR <i>R. K. Balach</i> 9-25-85	NAME		
MATERIAL		CHK <i>R. K. Balach</i> 10-15-85	FEMALE TYPE XII CONTACT ASSEMBLY, WITH ASSIST SPRING		
SEE CALLOUT		APPD <i>R. K. Balach</i> 10-15-85	SIZE	FSCM NO	DRAWING NO
FINISH		APPD <i>Miss Smith</i> 10-15-85	C	00779	66740
SEE DASH NO		OTHER APPD	SCALE	N/T	SHEET

CUSTOMER DRAWING

AMP 1471-6 REV 2-81