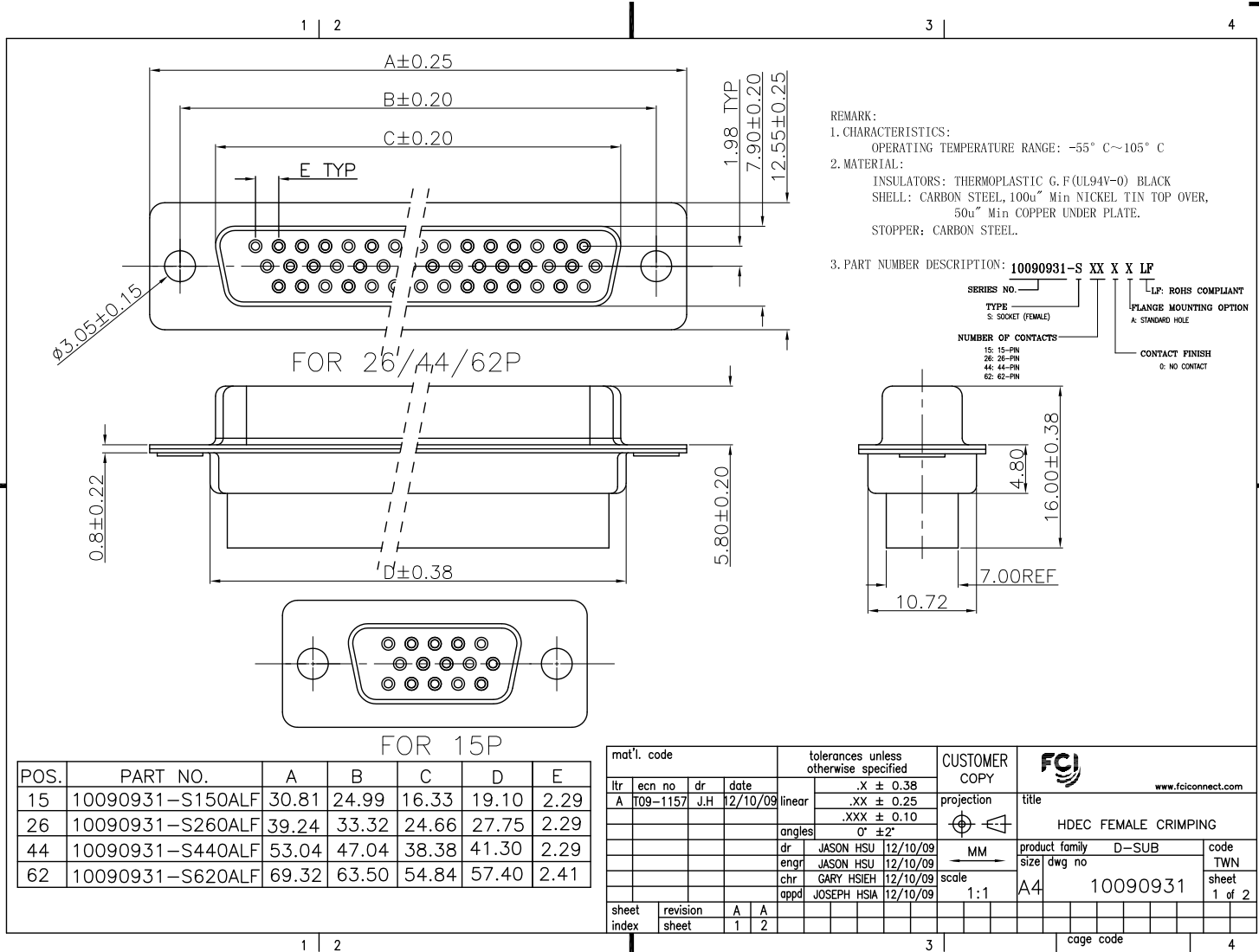


Tous droits strictement réservés. Reproduction ou communication à des tiers interdite sous quelque forme que ce soit sans autorisation écrite du propriétaire. Property of FCJ. Droits de reproduction FCJ.



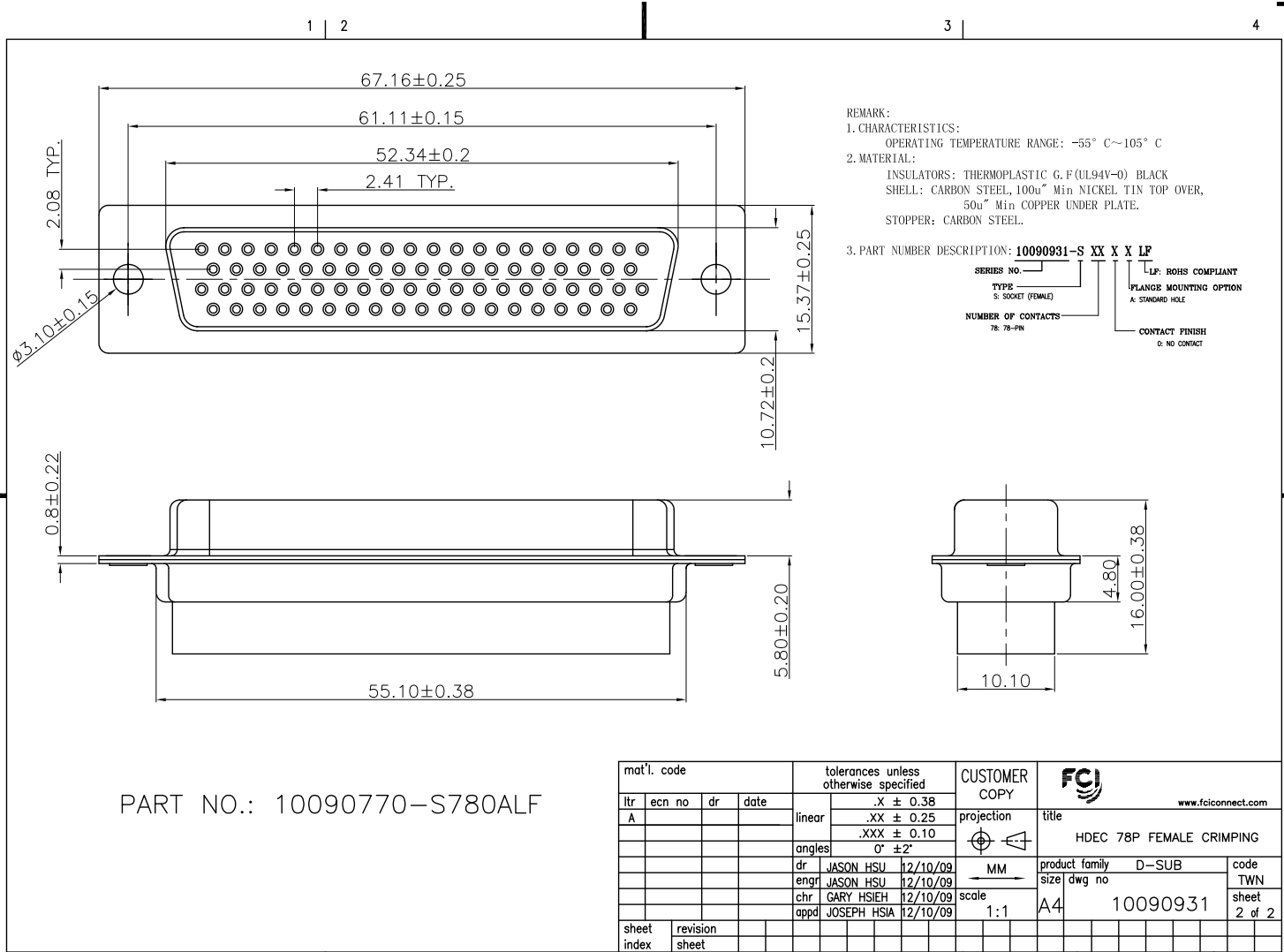
All rights strictly reserved. Reproduction or issue to third parties in any form whatever is not permitted without written authority from the proprietor. Property of FCJ. Copyright FCJ.



Tous droits strictement réservés. Reproduction ou communication à des tiers interdite sous quelque forme que ce soit sans autorisation écrite du propriétaire. Property of FCJ. Droits de reproduction FCJ.



All rights strictly reserved. Reproduction or issue to third parties in any form whatever is not permitted without written authority from the proprietor. Property of FCJ. Copyright FCJ.



REMARK:
 1. CHARACTERISTICS:
 OPERATING TEMPERATURE RANGE: -55° C~105° C
 2. MATERIAL:
 INSULATORS: THERMOPLASTIC G.F.(UL94V-0) BLACK
 SHELL: CARBON STEEL, 100u" Min NICKEL TIN TOP OVER,
 50u" Min COPPER UNDER PLATE.
 STOPPER: CARBON STEEL.
 3. PART NUMBER DESCRIPTION: **10090931-S XX X X LF**

SERIES NO. _____
 TYPE _____
 S: SOCKET (FEMALE)
 NUMBER OF CONTACTS: 78-78-PIN
 L: LF: ROHS COMPLIANT
 PL: PL: PLATE MOUNTING OPTION
 A: STANDARD HOLE
 CONTACT FINISH
 E: NO CONTACT

PART NO.: 10090770-S780ALF

mat'l. code				tolerances unless otherwise specified		CUSTOMER COPY		FCJ	
ltr	ecn no	dr	date	linear	.X ± 0.38	projection	title	www.fcjconnect.com	
A					.XX ± 0.25		HDEC 78P FEMALE CRIMPING		
				angles	.XXX ± 0.10			product family	D-SUB
				dr	0° ±2°	MM	size	D-SUB	TWN
				enrg	JASON HSU 12/10/09	scale	dwg no	10090931	sheet
				chr	JASON HSU 12/10/09	1:1	A4	2 of 2	
				appd	GARY HSIEH 12/10/09				
					JOSEPH HSIA 12/10/09				
sheet index	revision sheet							cage code	