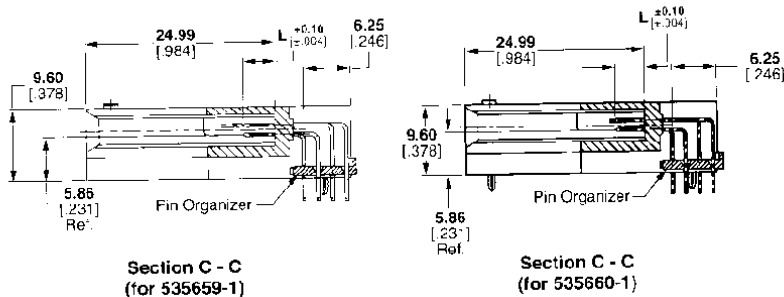
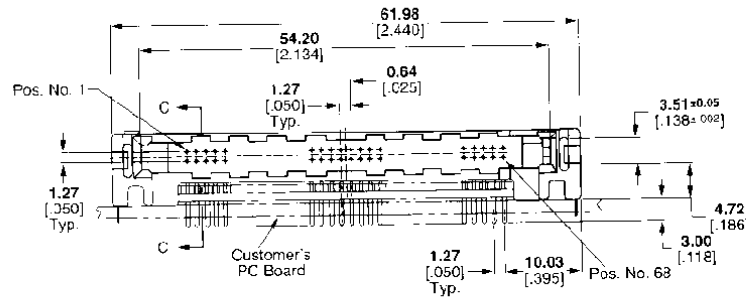
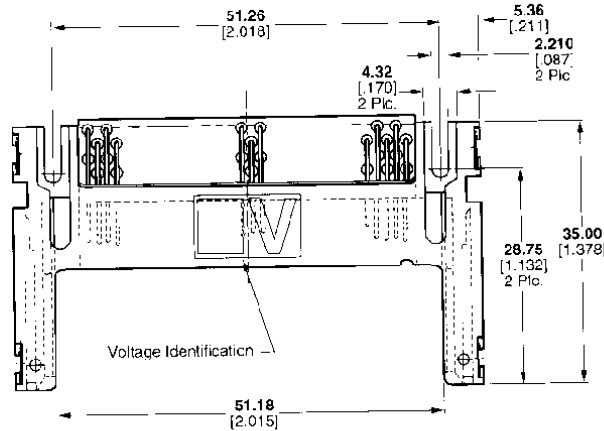
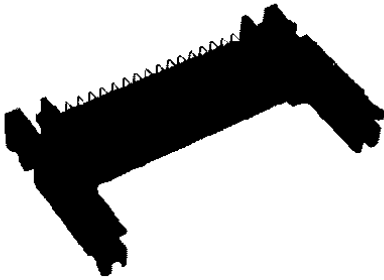


## Pin Header, Single Slot, Raised Height, Top Board Thru-Hole Mount (Continued)

### 68 Positions with Holddowns

**Part Numbers:**  
**535660-1 (4 Holddowns)**  
**535659-1 (2 Rear Holddowns)**  
 (Keyed for 5 Volt cards),



Pin Length (L)	Pin Locations
5.00 .197	1, 17, 34, 35, 51, 68
4.25 .167	All Others Not Listed
3.50 .138	36, 67

### Material and Finish:

**Housing and Organizer** — Liquid crystal polymer, black

**Contacts** — Brass; duplex plated 0.00076 [0.00030] minimum gold on mating area; 0.00381 [0.00150] minimum tin-lead on solder tail, with entire contact underplated 0.00127 [0.00050] minimum nickel

### Related Product Data:

**Mating Receptacle Assemblies** — Any 68-position receptacle assembly when mounted in a PCMCIA card frame

**Guide Rails** — page 27

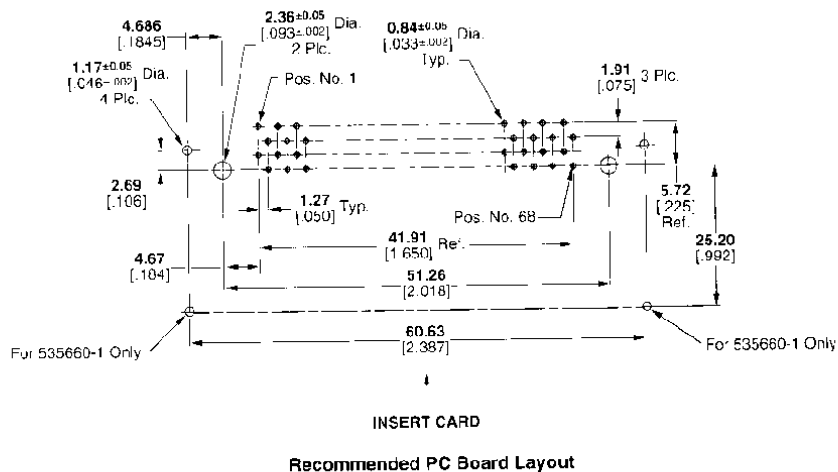
**ESD/EMI Card Guide Assembly** — page 28

**Ejectors** — pages 30 & 31

**Performance Data** — page 80

### Technical Documents (Page 80):

**AMP Product Specification**  
108-1469



**Note:** Holddowns retain the pin header on a PC board during processing. Two size M2 [2-56 UNC] screws (Customer supplied) are required for strain relief.

Single Slot, Raised Height Pin Headers