

R13 Round Rocker Switches 10A 250Vac

rocker switches



- ▶ Miniature round rocker switch
- ▶ Ratings up to 10A, 250Vac
- ▶ Single & double pole
- ▶ Illuminated & non-illuminated, neon and LED
- ▶ Choice of actuators
- ▶ Matching indicator
- ▶ Panel cut out: 20.2 dia.



SP 10(4)A 250Vac T85

DP 10(4)A 250Vac T85



UL CSA SP 16A 125Vac & 10A 250Vac
 UL CSA DP 16A 125Vac, 10A 250Vac, 10A 28Vdc
 UL 85°C, file E67774(S), CSA file LR45128



RoHS compliant

Single pole has μ contact gap. Technical data on pages 4 & 5.

Special products

Are made to order and can be supplied with a range of body and rocker/lens colours, print & lamp voltage.
 Call sales for availability to your special requirements.

R13 112A AAA

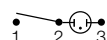
TERMINAL FUNCTION ROCKER BODY PRINT, COLOUR, VOLTAGE ETC

PRODUCT DETAILS



SP ON - OFF μ

Cat no.
R13 112A AAA



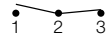
SP ON - OFF μ
Lit 230V

Cat no.
R13 112B NAC



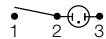
SP ON - OFF μ

Cat no.
R13 112A AAB



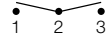
SP ON - ON μ

Cat no.
R13 112C AAA



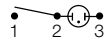
SP ON - OFF μ
Lit 230V

Cat no.
R13 112B NAA



SP ON - OFF - ON μ

Cat no.
R13 112D AAA



SP ON - OFF μ
Lit 230V

Cat no.
R13 112B NAB



SP ON - OFF μ
(Momentary ON)

Cat no.
R13 208F AAA*



DP ON - OFF

Cat no.
R13 244A AAA

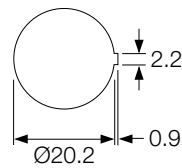


DP ON - OFF
Lit 230V

Cat no.
R13 244B NAA

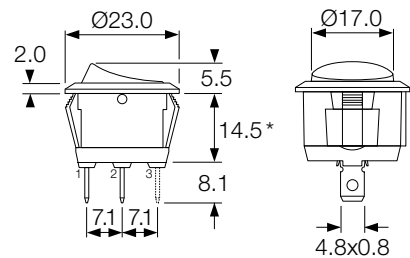
DIMENSIONS (mm)

Panel cut-out



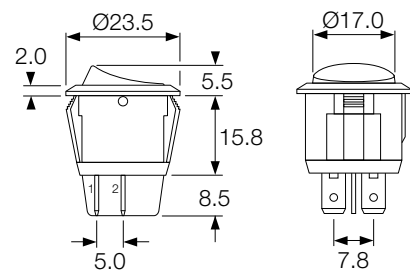
Snap fixing into panel thickness up to 3.0

Single pole



* R13 208F has 12.5mm deep body

Double pole





R13 112B NAA



R13 112A AAA

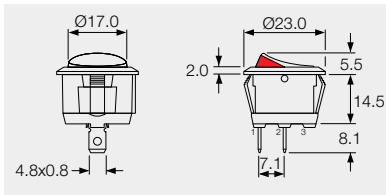


R13 112A2 ---

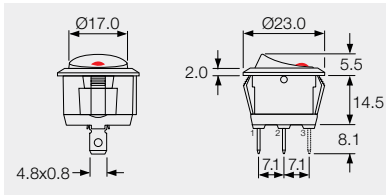
PRODUCT DETAILS



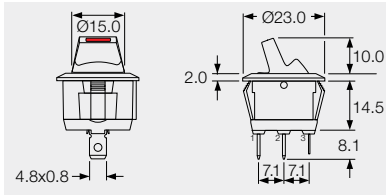
SP ON - OFF μ
Bright colour ON signal
Cat no.
R13 112A2 - -



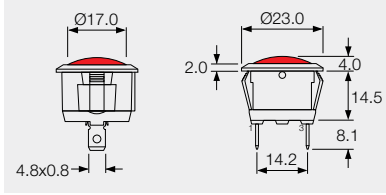
SP ON - OFF μ
Lit Window
Cat no.
R13 112B2 - -



SP ON - OFF μ
Paddle tip has red LED
Cat no.
R13 112LP - -

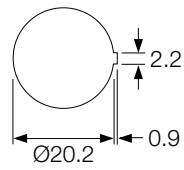


Indicator light
Cat no.
R9 92B - - -



approvals - contact sales

PANEL CUT-OUT (mm)



Snap fixing into panel thickness up to 3.0



Protective cover L188

Snaps on to bodies (not R13 211 or R13 112LP), this reduces maximum acceptable panel thickness to 2.4mm.