

# R13 Round Rocker Switches 6A 250Vac



Factored product



SP 6A 250Vac T85,  
DP 10(4)A 250Vac T85



UL CSA SP 10A 125Vac & 6A 250Vac (For 16A call the factory)  
UL CSA DP 8A 125/250Vac  
UL 85°C, file E67774(S) CSA file LR45128

Single pole has  $\mu$  contact gap  
Technical data on pages 4 & 5

## Standard products

Are supplied with the body and rocker colour, print & lamp voltage shown in the product illustration and description

## R13 112A AAA

TERMINAL FUNCTION ROCKER BODY PRINT, COLOUR, VOLTAGE ETC

### PRODUCT DETAILS



SP ON - OFF  $\mu$   
Cat no.  
R13 112A AAA



SP ON - OFF  $\mu$   
Lit 230V  
Cat no.  
R13 112B NAC



SP ON - OFF  $\mu$   
Cat no.  
R13 112A AAB



SP ON - ON  $\mu$   
Cat no.  
R13 112C AAA



SP ON - OFF  $\mu$   
Lit 230V  
Cat no.  
R13 112B NAA



SP ON - OFF - ON  $\mu$   
Cat no.  
R13 112D AAA



SP ON - OFF  $\mu$   
Lit 230V  
Cat no.  
R13 112B NAB



SP ON - OFF  $\mu$   
(Momentary On)  
Cat no.  
R13 208F AAA\*



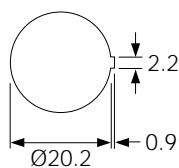
DP ON - OFF  
Cat no.  
R13 244A AAA



DP ON - OFF  
Lit 230V  
Cat no.  
R13 244B NAA

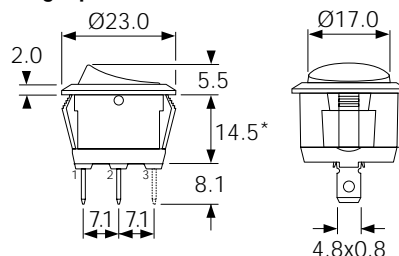
### DIMENSIONS (mm)

#### Panel cut-out



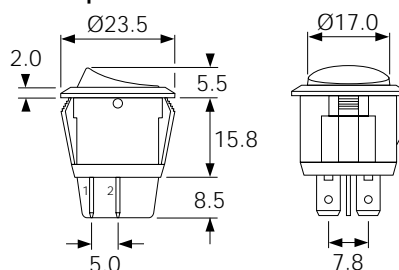
Snap fixing into panel thickness up to 3.0

#### Single pole



\* R13 208F has 12.5mm deep body

#### Double pole



# R13 Round Rocker Switches 6A 250Vac



Factory product



**6A 250Vac T85**  
**UL CSA 10A 125Vac & 6A 250Vac (For 16A call the factory)**  
**UL 85°C, file E67774(S) CSA file LR45128**

Single pole has  $\mu$  contact gap  
 Technical data on pages 4 & 5

## Special products

Are made to order and can be supplied with a range of body and rocker/lens colours, print & lamp voltage

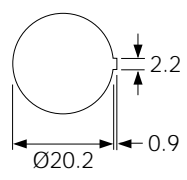
Call the factory for availability to your special requirements

## R13 112A2 - -

TERMINAL FUNCTION ROCKER BODY PRINT, COLOUR, VOLTAGE ETC

PRODUCT DETAILS		
<p>SP ON - OFF <math>\mu</math>                  Bright colour ON signal  <b>Cat no.</b>  <b>R13 112A2 - -</b></p>		
<p>SP ON - OFF <math>\mu</math>                  Lit Window  <b>Cat no.</b>  <b>R13 112B2 - -</b></p>		
<p>SP ON - OFF <math>\mu</math>                  Paddle tip has red LED  <b>Cat no.</b>  <b>R13 112LP - -</b></p>		
<p>Indicator light  <b>Cat no.</b>  <b>R9 92B - - -</b></p> <p>approvals - contact the factory</p>		
<p>SP ON - OFF <math>\mu</math>  <b>R13 211A - - -</b>                  SP ON - ON <math>\mu</math>  <b>R13 211C - - -</b></p> <p>only</p>		<p>Sub-panel Mounting</p>

## PANEL CUT-OUT (mm)

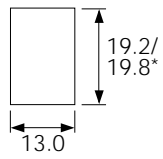


For R13 112A2  
 R13 112B2  
 R13 112LP  
 R9 92B

Snap fixing into panel thickness up to 3.0



**Protective cover L188**  
 Snaps on to bodies (not R13 211 or R13 112LP)  
 but reduces panel thickness by 0.6mm



For R13 211A  
 R13 211C

\* Dependent on panel thickness 0.75 - 3.0