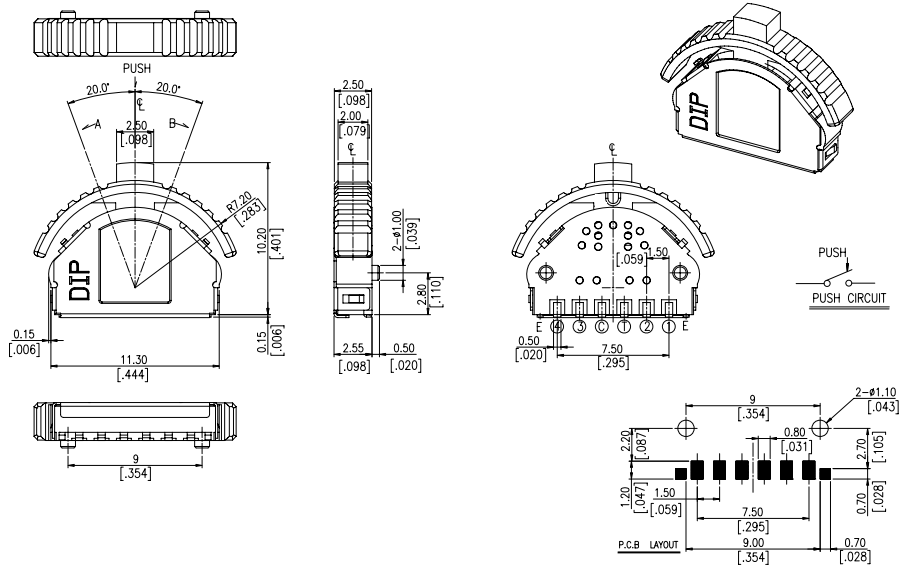


PUSH & LEVER SERIES

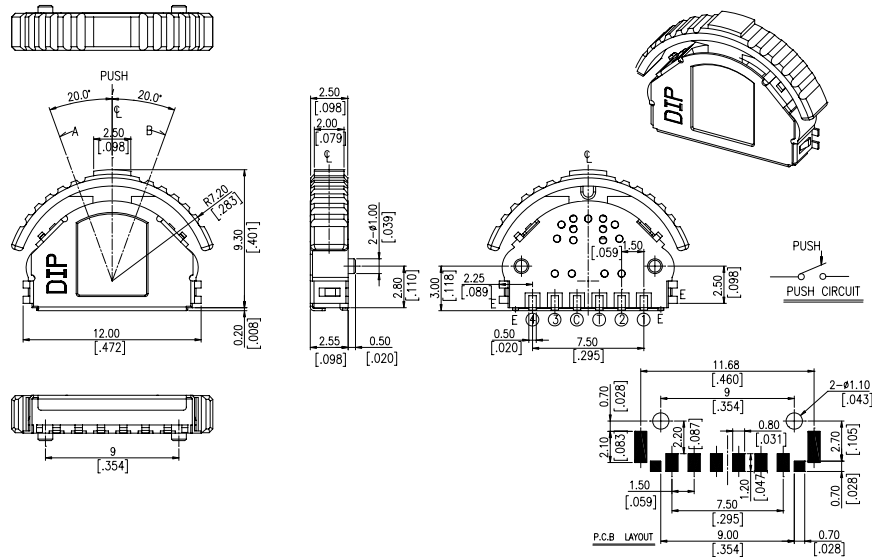
DIMENSIONS

PLJH



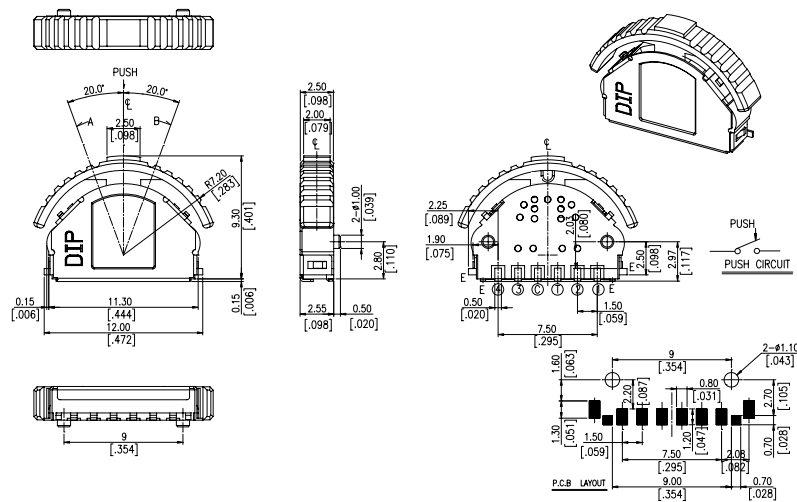
General Tolerance : $\pm 0.20\text{mm}$

PLJG1



General Tolerance : $\pm 0.20\text{mm}$

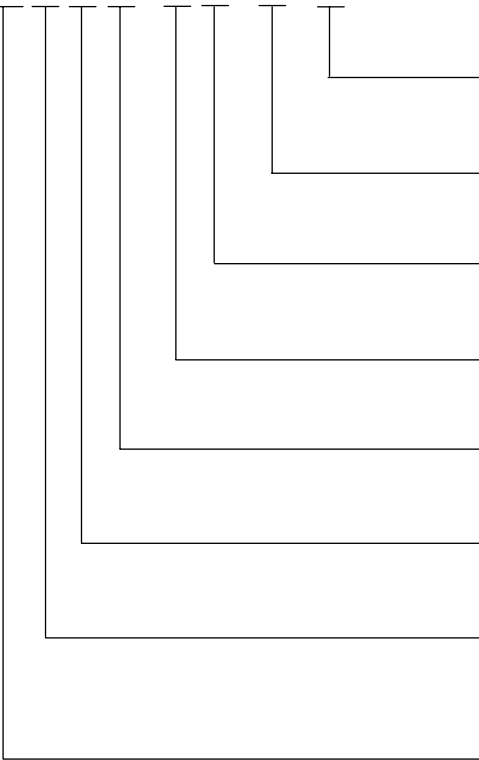
PLJG



General Tolerance : $\pm 0.20\text{mm}$

HOW TO ORDER

P L - - -



Package Style :
 = Tape & Reel

Soldering :
V = Lead Free Solderable

H = High Actuator
 = Standard

G = Gray
K = Black

= Two Ground Pins
1 = Four Ground Pins

G = Ground Terminal
 = Without Ground Terminals

Termination Type :
J = S.M.T J BEND Terminals

Push & Lever Switch

| ANGLE | A | | B | | 20° |
|--------------|-----|-------|------|------|-----|
| | 20° | (16°) | (8°) | (8°) | |
| TERMINAL NO. | | | | | |
| ① | /// | | | | |
| ② | /// | | | | |
| ③ | | | | | /// |
| ④ | | | | | /// |
| Ⓢ | /// | /// | /// | /// | /// |

* E : ERTHING TERMINAL
 * ■ : ON POSITION

CIRCUIT DIAGRAM

SPECIFICATION

△MECHANICAL

Mechanical Life: 100,000 operation cycles
Operation Force: (A) Force on return actuator
 (A) 40 ±20gf.
 (B) Force on center push direction
 (B) 150±50gf.

Operation Temp: -10°C to +70°C
Storage Temperature: -25°C to +80°C

△ELECTRICAL

Electrical Life: 100,000 operation cycles
Non-switching Rating: 100mA, 50VDC
Switching Rating: 10mA, 5VDC
Contact resistance: (a) 100mΩ max. at initial
 (b) 200mΩ max. after life test

Insulation Resistance: 100MΩ min. 100VDC
Dielectric Strength: 100VAC/ minute
Capacitance : 5pF max.
Circuit: Single pole single throw.

MATERIAL

△COVER: Stainless Steel

△BASE: UL94V-0 PPS Thermoplastic
 Color: Brown

△STEM: UL94HB Nylon Thermoplastic
 Color: Gray, Black

△CONTACT DISC: Phosphor bronze with silver cladding
 at contact surface

△TERMINAL: Phosphor bronze with silver cladding at
 contact surface

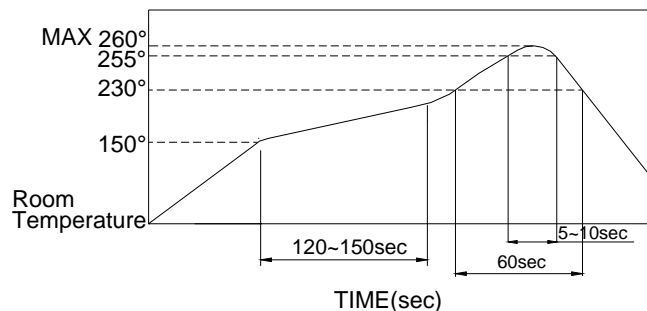
△SPRING: SWP or SUS

SOLDERING PROCESSES

For best results, please follow these recommendations: △ Temperature Profile:

△HAND SOLDERING : Use a soldering iron of 30 watts,
 Controlled at 350°C approximately 5 seconds while
 Applying solder.

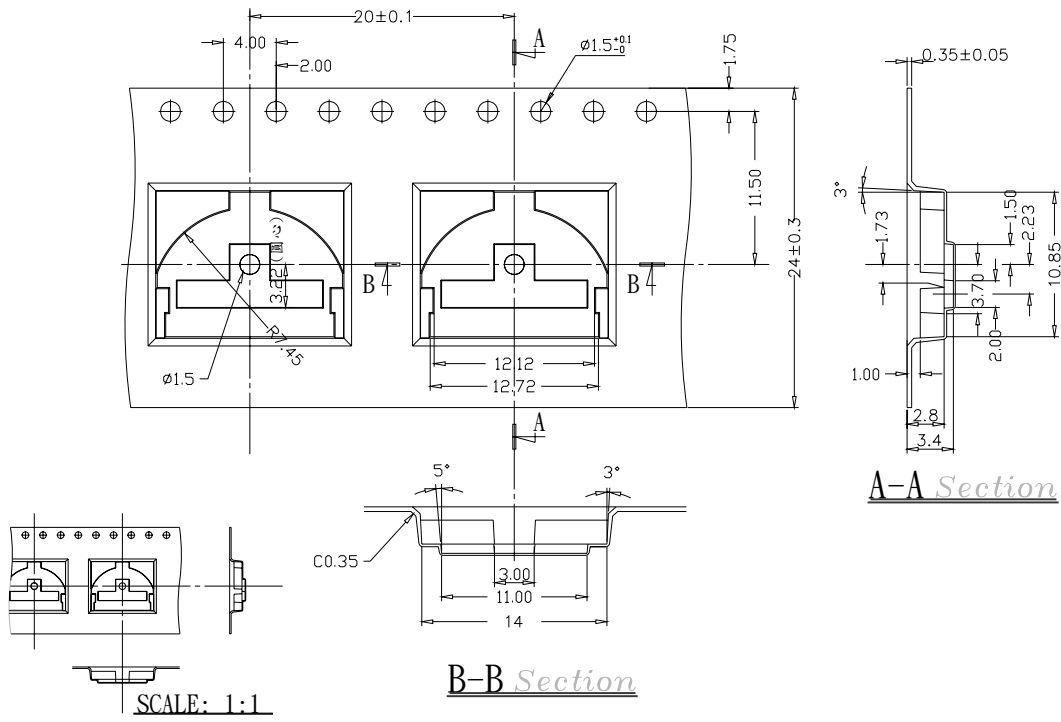
△REFLOW SOLDERING: When applying reflow
 soldering the peak temperature of the reflow oven
 should be set to 260°C max.



PACKING

PLJ-□H REEL

| Part Number | Number Per Tube | Number Per Reel |
|-------------|-----------------|-----------------|
| PLJ | - | 1000 |



General Tolerance : ± 0.1 mm