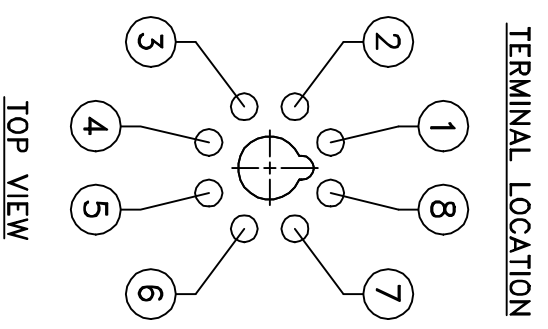
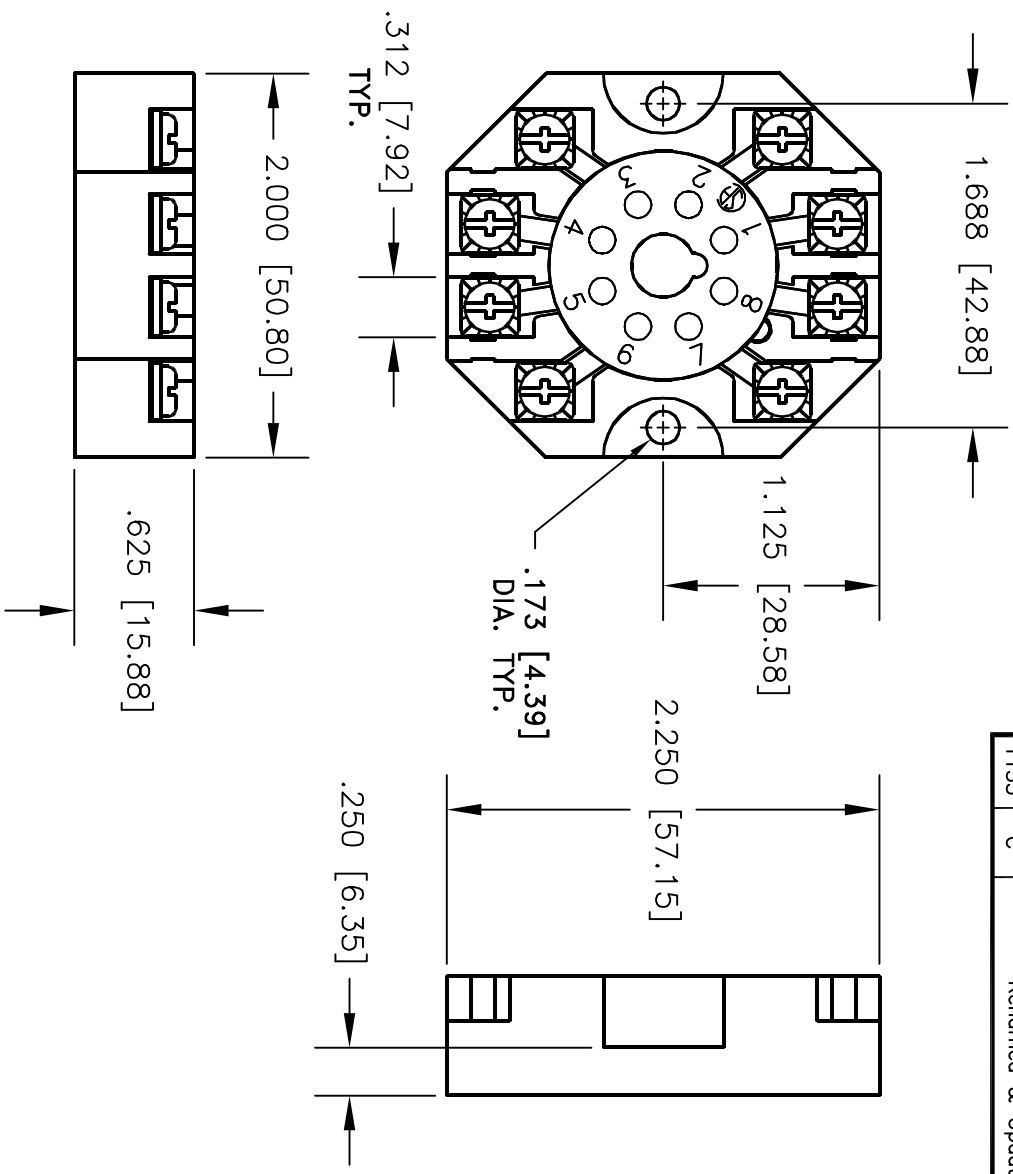


ALL RIGHTS RESERVED. NO PORTION OF THIS PUBLICATION, WHETHER IN WHOLE OR IN PART CAN BE REPRODUCED WITHOUT THE EXPRESS WRITTEN CONSENT OF SPC TECHNOLOGY.

REVISIONS		DOC. NO. SPC-F005	* Effective: 12/21/98	* DCP No: 680				
DCP #	REV	DESCRIPTION	DRAWN	DATE	CHECKD	DATE	APPRVD	DATE
16	B	REDRAWN FROM RS-8B	D.J.C.	5/16/97	J.C.	5/19/97	B.B.	5/23/97
1153	C	Renamed & Updated	JMM	12/12/01	DJC	12/27/01	DJC	12/27/01



TOP VIEW

**DISCLAIMER:**  
 ALL STATEMENTS AND TECHNICAL INFORMATION CONTAINED HEREIN ARE BASED UPON INFORMATION AND/OR TESTS WE BELIEVE TO BE ACCURATE AND RELIABLE SINCE CONDITIONS OF USE ARE BEYOND OUR CONTROL. THE USER SHALL DETERMINE THE SUITABILITY OF THE PRODUCT FOR THE INTENDED USE AND ASSUME ALL RISK AND LIABILITY WHATSOEVER IN CONNECTION THEREWITH.

UNLESS OTHERWISE SPECIFIED, DIMENSIONS ARE FOR REFERENCE PURPOSES ONLY.

DRAWN BY:	DANIEL CAREY	DATE:	5/16/97
CHECKED BY:	JOHN COLE	DATE:	5/19/97
APPROVED BY:	BRETT BRAATZ	DATE:	5/23/97



DRAWING TITLE: 8 PIN OCTAL SOCKET

SIZE	DWG. NO.	ELECTRONIC FILE	REV
A	RS-8B	23N3600.dwg	C
SCALE:	NTS	U.O.M.: INCHES [mm]	SHEET: 1 OF 1