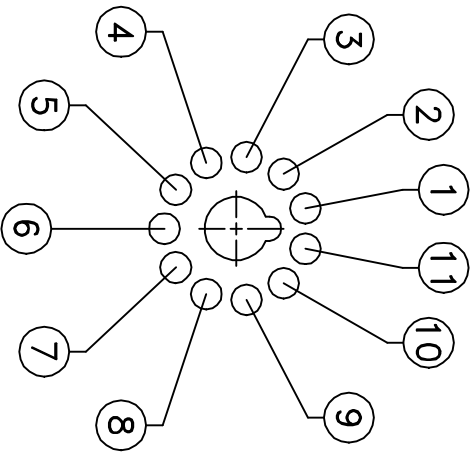
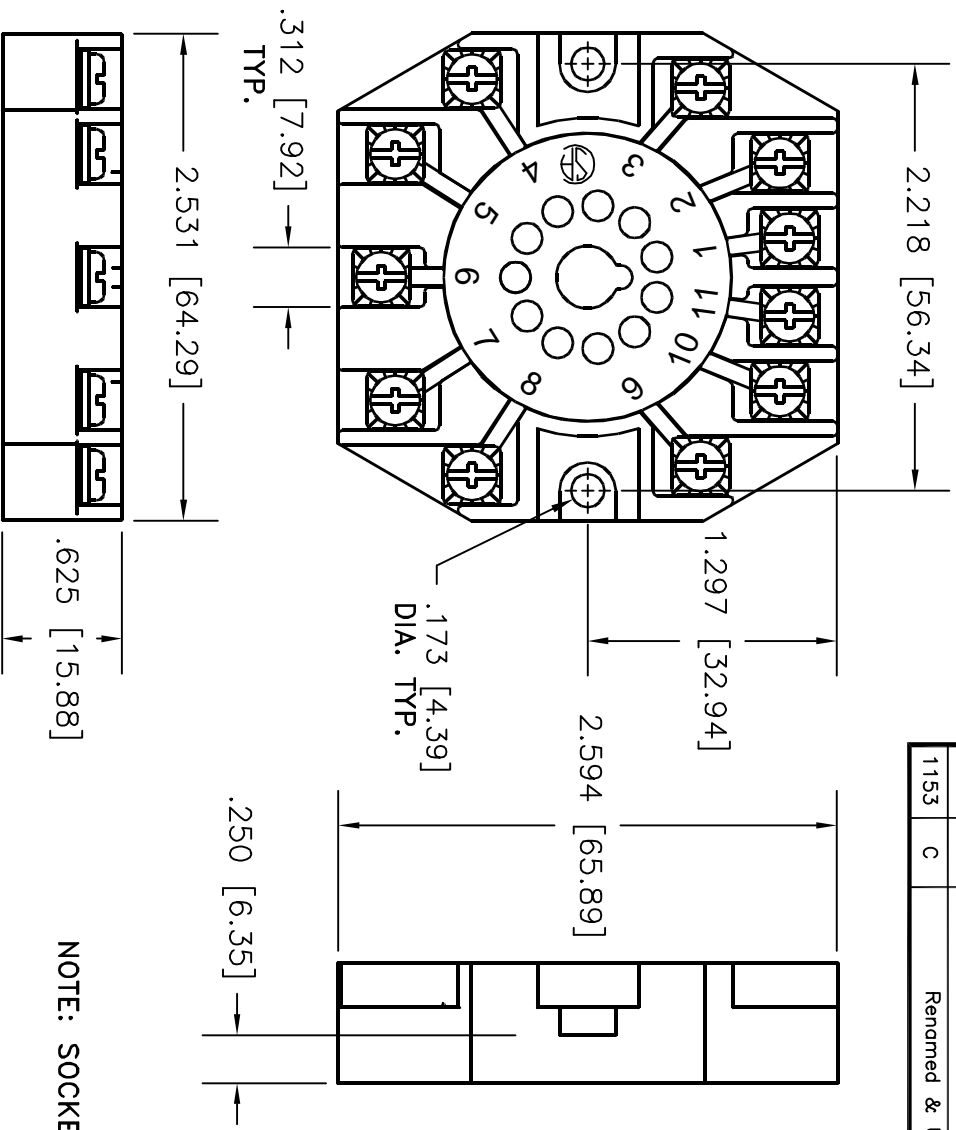


ALL RIGHTS RESERVED. NO PORTION OF THIS PUBLICATION, WHETHER IN WHOLE OR IN PART CAN BE REPRODUCED WITHOUT THE EXPRESS WRITTEN CONSENT OF SPC TECHNOLOGY.

REVISONS		DOC. NO. SPC-F005	Effective: 12/21/98		DCP No: 680			
DCP #	REV	DESCRIPTION	DRAWN	DATE	CHECKD	DATE	APPRVD	DATE
16	B	REDRAWN AND REVISED	D.J.C.	5/16/97	J.C.	5/19/97	B.B.	5/23/97
1153	C	Renamed & Updated	JMM	12/12/01	DJC	12/27/01	DJC	12/27/01



TERMINAL LOCATION

TOP VIEW

NOTE: SOCKET USES BINDER HEAD SCREWS.

**DISCLAIMER**  
 ALL STATEMENTS AND TECHNICAL INFORMATION CONTAINED HEREIN ARE BASED UPON INFORMATION AND/OR TESTS WE BELIEVE TO BE ACCURATE AND RELIABLE SINCE CONDITIONS OF USE ARE BEYOND OUR CONTROL. THE USER SHALL DETERMINE THE SUITABILITY OF THE PRODUCT FOR THE INTENDED USE AND ASSUME ALL RISK AND LIABILITY WHATSOEVER IN CONNECTION THEREWITH.



**SPC TECHNOLOGY**

UNLESS OTHERWISE SPECIFIED, DIMENSIONS ARE FOR REFERENCE PURPOSES ONLY.

DRAWING TITLE:

11 PIN OCTAL SOCKET

DRAWN BY:

I.T.

CHECKED BY:

I.T.

APPROVED BY:

D.D.

DATE:

5/3/83

DATE:

5/3/83

DATE:

5/3/83

SIZE DWG. NO.

A RS-11B

ELECTRONIC FILE

23N3601.dwg

REV

C