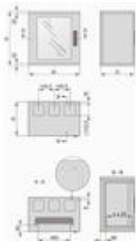
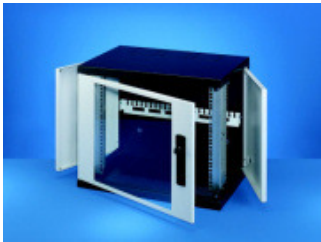


19" wall mounted enclosure



Part no.: 10236-166

Features:

- Multi functional 19" wall case with hinged side panels
- Cable entry possible from above or below; the cable ducting opening can be sealed with two brush strips each, resp. can be used to assemble fan
- Cable support rail is included and is adjustable in 25 mm increments
- 19" panel/slide mounts are depth-adjustable in 25 mm increments
- Type of protection IP 20



Technical information:

Height	Height H	Width W	Depth D	E	Weight	Load-carrying capacity:
20 U	962 mm	600 mm	600 mm	85 mm	38 kg	25 kg

Delivery comprises: assembled

Item	Qty	Description
1	1	Basic case, C form, St, 2 mm, RAL 7021
2	1	Glazed door with key/lock cover (key no. 2233), door handle cut-out S2100, frame, St, 1.5 mm, RAL 7035, pane, Sekurit glass 4 mm
3	2	Side panel, St, 1.5 mm, RAL 7035
4	1	Cable support rail, St, RAL 7035
5	2	19" slide mounts, St, 2 mm, finish AlZn
6	2	Brush strip (to cover cable entry opening)
7	1	Assembly kit for wall mounting

Accessories:

Part no.	Description	
21236-097	GND/earthing, PU 1 kit	Add to basket
21236-094	Brush strip, 1 piece	Add to basket
21236-089	Feet, plastic, black, PU 4 pieces	Add to basket

20114-728	Cable shell for cable bundle 30 ... 34 mm, PU 10 pieces	Add to basket
20118-351	Cable tie 92 mm x 2.5 mm, PU 25 pieces	Add to basket
21190-435	19" assembly kit (screw, washer, nut) (32 x M6 screws x 16, 32 x plastic washers, 32 x cage nuts)	Add to basket