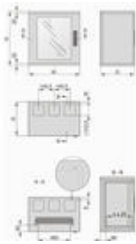
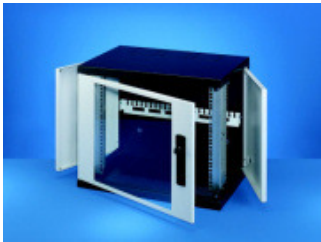


## 19" wall mounted enclosure



Part no.: 10236-161

## Features:

- Multi functional 19" wall case with hinged side panels
- Cable entry possible from above or below; the cable ducting opening can be sealed with two brush strips each, resp. can be used to assemble fan
- Cable support rail is included and is adjustable in 25 mm increments
- 19" panel/slide mounts are depth-adjustable in 25 mm increments
- Type of protection IP 20



## Technical information:

Height	Height H	Width W	Depth D	E	Weight	Load-carrying capacity:
16 U	812 mm	600 mm	500 mm	85 mm	30 kg	30 kg

## Delivery comprises: assembled

Item	Qty	Description
1	1	Basic case, C form, St, 2 mm, RAL 7021
2	1	Glazed door with key/lock cover (key no. 2233), door handle cut-out S2100, frame, St, 1.5 mm, RAL 7035, pane, Sekurit glass 4 mm
3	2	Side panel, St, 1.5 mm, RAL 7035
4	1	Cable support rail, St, RAL 7035
5	2	19" slide mounts, St, 2 mm, finish AlZn
6	2	Brush strip (to cover cable entry opening)
7	1	Assembly kit for wall mounting

## Accessories:

Part no.	Description	
<a href="#">21236-097</a>	GND/earthing, PU 1 kit	<b>Add to basket</b>
<a href="#">21236-094</a>	Brush strip, 1 piece	<b>Add to basket</b>
<a href="#">21236-089</a>	Feet, plastic, black, PU 4 pieces	<b>Add to basket</b>

<b>20114-728</b>	Cable shell for cable bundle 30 ... 34 mm, PU 10 pieces	<b>Add to basket</b>
<b>20118-351</b>	Cable tie 92 mm x 2.5 mm, PU 25 pieces	<b>Add to basket</b>
<b>21190-435</b>	19" assembly kit (screw, washer, nut) (32 x M6 screws x 16, 32 x plastic washers, 32 x cage nuts)	<b>Add to basket</b>