

Copyright FCI



FCIconnect.com

1 | 2

3 |

4

PRODUCT NUMBER

20020302-XXXXXXLF

20020302-□ □ □ □ B 0 □ L F

PITCH

D: 3.81 mm
G: 5.00 mm
H: 5.08 mm

POLES


02: 2 POLES
03: 3 POLES

24: 24 POLES

LF : DENOTED RoHS COMPATIBLE

1 : STANDARD PRODUCT
W/ BOX PACKING

PROPERTY TABLE

FCI SERIES NAME		09-381	09-500	09-508	
PITCH (mm)		3.81	5.00	5.08	
VOLTAGE RATING (VAC)		300	300	300	
CURRENT RATING (A)		6	10	10	
APPLICABLE WIRE RANGE (AWG)		1-WIRE	16~26	14~24	14~24
		2-WIRE	NA	NA	NA
WIRE CROSS SECTION (mm ²)	SOLID	1-WIRE	1.0	1.5	1.5
		2-WIRE	NA	NA	NA
	STRANDED	1-WIRE	1.0	1.5	1.5
		2-WIRE	NA	NA	NA
OPENING CONTACT HOUSING(mm ²)		1.7x1.7	2.4x2.4	2.4x2.4	
WIRE STRIP LENGTH(mm)		9~10	9~10	9~10	
WITHSTANDING VOLTAGE (kV)		1.6	1.6	1.6	
OPERATING TEMP. (°C)		-40~+115	-40~+115	-40~+115	
SOLDERING TEMP. (°C)		250±10 (5 sec.)	250±10 (5 sec.)	250±10 (5 sec.)	
POLES AVAILABLE		02~24	02~24	02~24	
SAFETY CERTIFICATE					

HOUSING CODE

CODE	COLOR	AVAILABILITY
1	GREEN(RAL 6018/T)	STANDARD
2	BLACK	ON REQUEST ONLY
3	GREY(RAL 7004/P)	ON REQUEST ONLY
4	BLUE(RAL 5015/A)	ON REQUEST ONLY

NOTES:

1. MATERIALS
1-1 HOUSING: THERMALPLASTIC RESIN, UL 94V-0 RATED.
1-2 COVER: THERMALPLASTIC RESIN, UL 94V-0 RATED.
1-3 LEVER: THERMALPLASTIC RESIN, UL 94V-0 RATED.
1-4 TERMINAL: COPPER ALLOY, TIN PLATED.
1-5 SPRING CLAMP: STAINLESS STEEL.
2. PRODUCT SPECIFICATION REFER TO FCI GS-12-625.
3. PRODUCT PACKING SPECIFICATION REFER TO FCI GS-14-1394.
4. FCI, SAFETY CERTIFICATE LOGO AND SERIES NAME TO BE SHOWN ON PRODUCT SURFACE.
5. THE PRODUCTS WHERE THE PART NUMBER END IN "LF" MEET THE EUROPEAN UNION DIRECTIVE AND OTHER COUNTRY REGULATIONS AS DESCRIBED IN GS-22-008.
6. RECOMMENDED SOLDERING PROCESS BY WAVE SOLDER.

mat'l. code		surface ASME Y14.5	tolerance ASME Y14.5	projection	product family
ltr	ecn no	dr	date	tolerances unless otherwise specified	title
A	T10-0191	WL	122010	angles X±0.5 X.X±0.3 X.XX±0.1	TERMINAL BLOCK
				dr WENDY CHEN 110910	TERMINAL BLOCK FIXED SIGNAL PLUG, VERTICAL WIRE INLET
				enrg JASON HSU 110910	dwg no 20020302 sheet 1 of 4 size A4
				chr JASON HSU 110910	type CUSTOMER Drawing
				appd JASON HSU 110910	
sheet index	revision sheet	A 1	A 2	A 3	A 4

form: A4mmXLC

1 |

2 |

PDM: Rev:A 3 | STATUS:Released Printed: Dec 21, 2010 4

Copyright FCI



FCIconnect.com

1 | 2

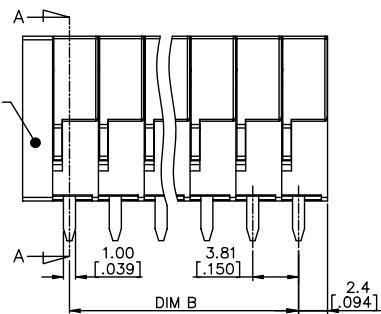
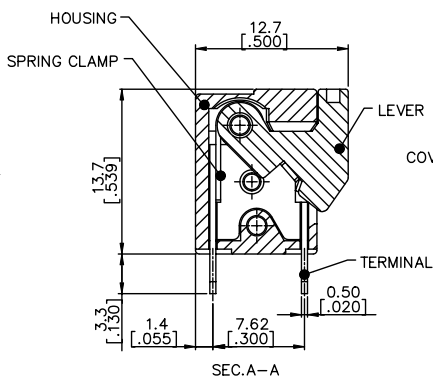
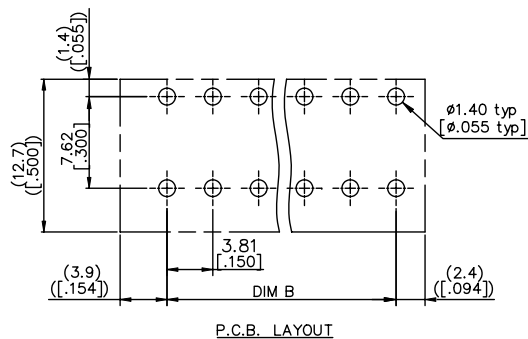
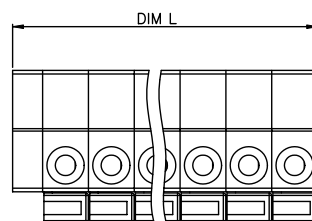
3 |

4

PRODUCT NUMBER	SERIES NAME	PITCH
20020302-DXXXXXXLF	09-381	3.81 mm

N = Number of poles
 Dim L = $(N \times 3.81 [.150]) + 2.50 [.098]$
 Dim B = $(N - 1) \times 3.81 [.150]$

POLES	Dim L	Dim B
2-6p	$\pm 0.15 [.006]$	$\pm 0.10 [.004]$
7-12p	$\pm 0.20 [.008]$	$\pm 0.20 [.008]$
13-18p	$\pm 0.30 [.012]$	$\pm 0.25 [.010]$
19-24p	$\pm 0.40 [.016]$	$\pm 0.30 [.012]$



mat'l. code		surface ASME Y14.5	tolerance ASME Y14.5	projection MM [INCH]	product family TERMINAL BLOCK
ltr	ecr	no	dr	date	title
A					TERMINAL BLOCK FIXED SIGNAL PLUG, VERTICAL WIRE INLET
tolerances unless otherwise specified					dwg no
angles X \pm 1°					sheet 2 of 4
dr WENDY CHEN 110910					size
enr JASON HSU 110910					20020302
chr JASON HSU 110910					A4
appd JASON HSU 110910					type
					CUSTOMER Drawing
sheet	revision				
index	sheet				

form: A4mmXLc

1 |

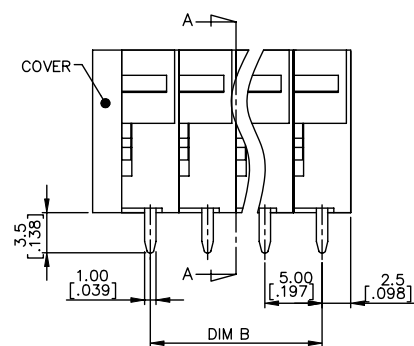
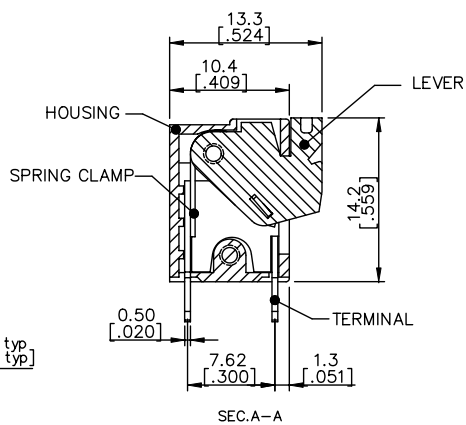
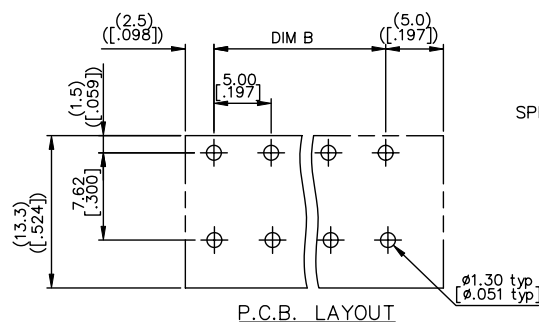
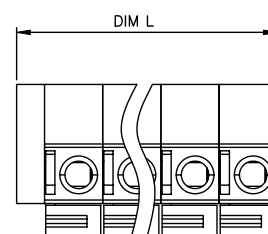
2 |

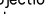
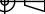
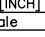
PDM: Rev:A 3 | STATUS:Released Printed: Dec 21, 2010 4

PRODUCT NUMBER	SERIES NAME	PITCH
20020302-GXXXXXXLF	09-500	5.00 mm

N = Number of poles
Dim L=(N \times 5.0[.197])+2.54[.100]
Dim B=(N-1) \times 5.0[.197]

POLES	Dim L	Dim B
2-6p	$\pm 0.15[.006]$	$\pm 0.10[.004]$
7-12p	$\pm 0.20[.008]$	$\pm 0.20[.008]$
13-18p	$\pm 0.30[.012]$	$\pm 0.25[.010]$
19-24p	$\pm 0.40[.016]$	$\pm 0.30[.012]$

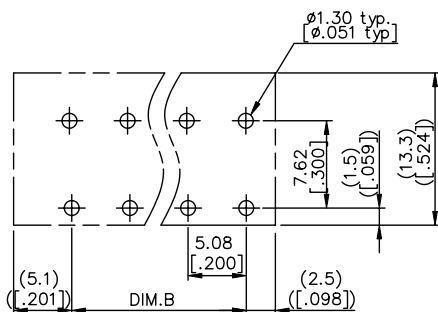
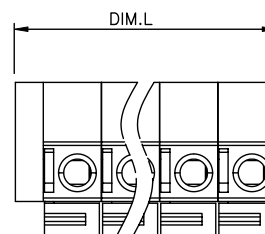


mat'l. code				surface ASME Y14.5 ✓		tolerance ASME Y14.5		projection 		product family TERMINAL BLOCK				
ltr	ecn	no	dr	date		tolerances unless otherwise specified				title				
A						angles $X \pm 0.5$ $X.X \pm 0.3$ $X' \pm 1"$ $X.XX \pm 0.1$		MM [INCH]		TERMINAL BLOCK FIXED SIGNAL PLUG, VERTICAL WIRE INLET				
dwr				WENDY CHEN		110910				dwg no		sheet 3 of 4		size
engr				JASON HSU		110910				20020302		A4		
chr				JASON HSU		110910								
apprd				JASON HSU		110910								
sheet index		revision sheet												

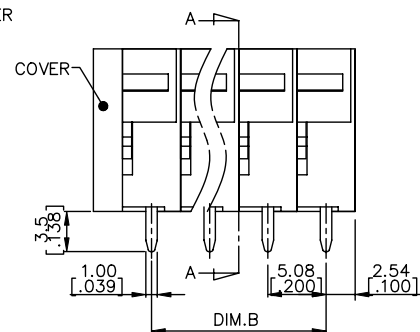
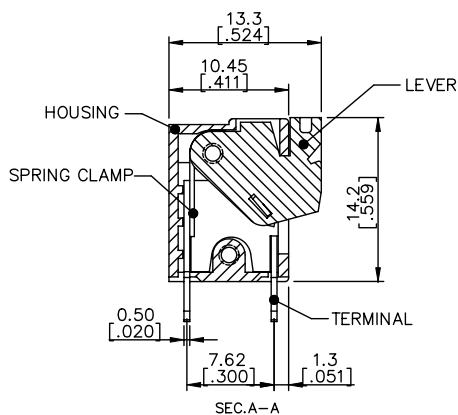
PRODUCT NUMBER	SERIES NAME	PITCH
20020302-HXXXXXXLF	09-508	5.08 mm





N = Number of poles
 Dim L=(N \times 5.08[.200])+2.54[.100]
 Dim B=(N-1) \times 5.08[.200]

POLES	Dim L	Dim B
2-6p	$\pm 0.15[.006]$	$\pm 0.10[.004]$
7-12p	$\pm 0.20[.008]$	$\pm 0.20[.008]$
13-18p	$\pm 0.30[.012]$	$\pm 0.25[.010]$
19-24p	$\pm 0.40[.016]$	$\pm 0.30[.012]$



P.C.B. LAYOUT



mat'l. code				surface ASME Y14.5		tolerance ASME Y14.5		projection 		product family TERMINAL BLOCK			
ltr	ecn	no	dr	date	tolerances unless otherwise specified				title				
A					angles	$X_{\pm 0.5}$			TERMINAL BLOCK				
					$X_{\pm 1}$	$X_{XX \pm 0.3}$	MM [INCH]		FIXED SIGNAL PLUG, VERTICAL WIRE INLET				
					dr	WENDY CHEN	110910	scale		dwg no			
					engr	JASON HSU	110910			sheet 4 of 4			
					chr	JASON HSU	110910			20020302			
					apprd	JASON HSU	110910			A4			
sheet index		revision sheet							type		CUSTOMER Drawing		