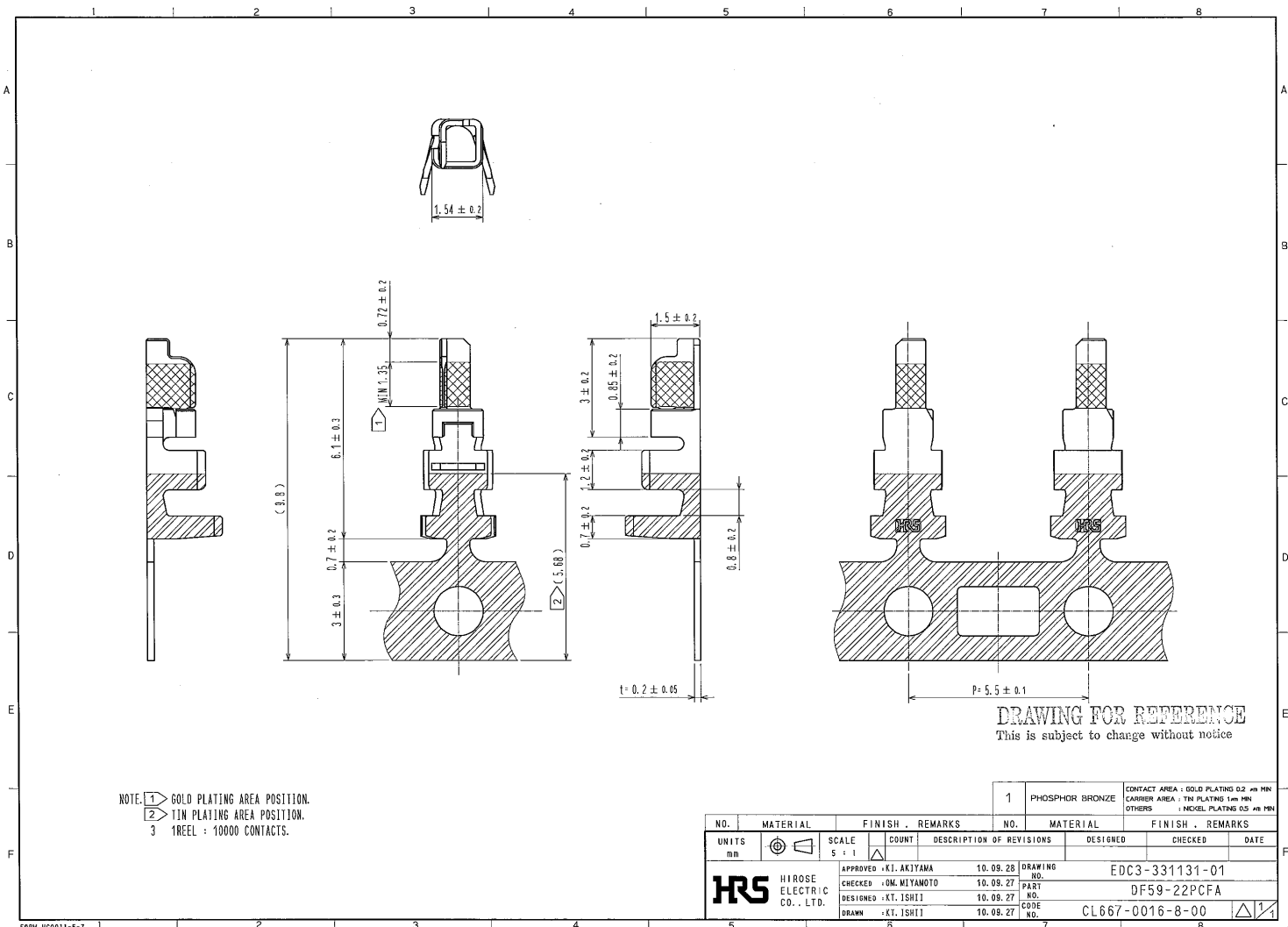


APPLICABLE STANDARD					
RATING	OPERATING TEMPERATURE RANGE	-35 °C TO +105°C (NOTE1)	STORAGE TEMPERATURE RANGE	-10 °C TO +60°C (NOTE3)	
	OPERATING HUMIDITY RANGE	20% TO 80% (NOTE2)	STORAGE HUMIDITY RANGE	40% TO 70% (NOTE3)	
	APPLICABLE CONNECTOR	DF59- * P-2C	CURRENT	3A	
	APPLICABLE CABLE	UL1061 AWG22	VOLTAGE ▲	SPECIFICATION	AC/DC 230V
	UL/C-UL			TBD	
	TÜV			TBD	
SPECIFICATIONS					
ITEM	TEST METHOD		REQUIREMENTS	QT	AT
<b>CONSTRUCTION</b>					
GENERAL EXAMINATION	VISUALLY AND BY MEASURING INSTRUMENT.		ACCORDING TO DRAWING.	X	X
MARKING	CONFIRMED VISUALLY.			X	X
<b>ELECTRIC CHARACTERISTICS</b>					
CONTACT RESISTANCE	DC6V MAX, 100mA.		30mΩ MAX.	X	-
<b>MECHANICAL CHARACTERISTICS</b>					
MECHANICAL OPERATION	30 TIMES INSERTION AND EXTRACTION.		①30mΩ MAX. ②NO DAMAGE, CRACK OR LOOSENESS OF PARTS.	X	-
VIBRATION	FREQUENCY 10 TO 55Hz, SINGLE AMPLITUDE 0.75mm, AT 10CYCLES FOR 3DIRECTION.		①NO ELECTRICAL DISCONTINUITY OF 1 μs. ②NO DAMAGE, CRACK OR LOOSENESS OF PARTS.	X	-
SHOCK	490 m/s <sup>2</sup> DURATION OF PULSE 11 ms AT 3 TIMES FOR 3 DIRECTIONS.			X	-
<b>ENVIRONMENTAL CHARACTERISTICS</b>					
DAMP HEAT (STEADY STATE)	EXPOSED AT 40 ± 2°C , 90 TO 95 % , 96 h. (AFTER LEAVING THE ROOM TEMPERATURE FOR 1~2h.)		①30mΩ MAX. ②NO DAMAGE, CRACK OR LOOSENESS OF PARTS.	X	-
RAPID CHANGE OF TEMPERATURE	TEMPERATURE -55°C→ +85°C TIME 30min→ 30min UNDER 5 CYCLES. (THE TRANSFERRING TIME OF THE TANK IS 2~3 min) (AFTER LEAVING THE ROOM TEMPERATURE FOR 1~2h.)			X	-
NOTE 1: INCLUDE THE TEMPERATURE RISING BY CURRENT. NOTE2:NO CONDENSING NOTE3:APPLY TO THE CONDITION OF LONG TERM STORAGE FOR UNUSED PRODUCTS BEFOR PCB ON BOARD, AFTER PCB BOARD OPERATING TEMPERATURE AND HUMIDITTY RANGE IS APPLIED FOR INTERIM STRAGE DURING TRANSPORTATION.					
▲	COUNT	DESCRIPTION OF REVISIONS	DESIGNED	CHECKED	DATE
▲	1	DIS-H-005618	KT. ISHII	OM. MIYAMOTO	11.03.24
REMARKS			APPROVED	KI. AKIYAMA	10.09.29
			CHECKED	OM. MIYAMOTO	10.09.29
Unless otherwise specified, refer to JIS C 5402 and IEC60512.			DESIGNED	KT. ISHII	10.09.29
			DRAWN	KT. ISHII	10.09.29
Note QT:Qualification Test AT:Assurance Test X:Applicable Test			DRAWING NO.	ELC4-331131-01	
<b>HRS</b>	SPECIFICATION SHEET		PART NO.	DF59-22PCFA	
	HIROSE ELECTRIC CO., LTD.		CODE NO.	GL667-0016-8-00	▲ 1/1

FORM HD0011-2-1

**DRAWING FOR REFERENCE**  
This is subject to change without notice





**DRAWING FOR REFERENCE**  
This is subject to change without notice

NOTE: 1 GOLD PLATING AREA POSITION.  
2 TIN PLATING AREA POSITION.  
3 1 REEL : 10000 CONTACTS.

NO.	MATERIAL	FINISH .	REMARKS	NO.	MATERIAL	FINISH .	REMARKS
1	PHOSPHOR BRONZE						
							CONTACT AREA : GOLD PLATING 0.2 μm MIN CARRIER AREA : TIN PLATING 1μm MIN OTHERS : NICKEL PLATING 0.5 μm MIN
UNITS	SCALE	COUNT	DESCRIPTION OF REVISIONS	DESIGNED	CHECKED	DATE	
mm	5 : 1	△					
APPROVED : KJ. AKIYAMA			10.09.28	DRAWING NO.			EDC3-331131-01
CHECKED : OM. MIYAMOTO			10.09.27	PART NO.			DF59-22PCFA
DESIGNED : KT. ISHII			10.09.27	CODE NO.			CL667-0016-8-00
DRAWN : KT. ISHII			10.09.27				△ 1/1

**HRS**  
HIROSE  
ELECTRIC  
CO., LTD.

ENG  
TO 11.4  
DEPT