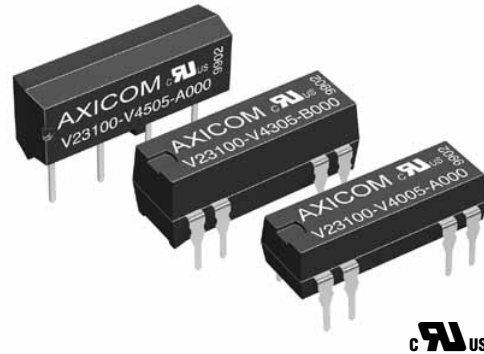


Reed Relay V23100 -V4

- Direct coil control with TTL-signals possible
- Highly reliable switching
- High switching rates
- Ultrasonic cleanable
- High vibration and shock resistance

Typical applications
 Incircuit tester, measuring and control systems, telecom equipment, alarm and security equipment



Approvals

UL File No. 111441
 Technical data of approved types on request

Contact Data	form A	form C
Contact arrangement	1 form A (1 NO), 2 form A (2 NO)	1 form C (CO)
Max. switching voltage		
at rated coil voltage 5VDC	200VDC/VAC _{peak}	175VDC
at rated coil voltage 12to 24VDC	200VDC/VAC _{peak}	175VDC _{peak}
Limiting continuous current	1A	1.2A
Switching power	10W, 10VA	3W, 3VA
Contact material	Ruthenium	
Contact style	reed contact	
Initial contact resistance	<150mΩ	
Operate / release time max.	0.75/0.15ms	1.1/1.6ms
Electrical endurance		
at 12V/10mA	50x10 ⁶ operations	
at 24V/400mA	5x10 ⁹ operations	

Coil Data

Magnetic system	neutral
Coil voltage range	5 to 24VDC
Max. coil temperature	105°C
Thermal resistance	< 75K/W

Coil versions, monostable

Coil code	Rated voltage VDC	Operate voltage VDC	Release voltage VDC	Coil resistance Ω±10%	Rated coil power mW
05	5VDC	3.5	0.75	500	50
12	12VDC	8.4	1.80	1000	144
15	15VDC	10.5	2.25	2000	112
24	24VDC	16.8	3.60	2000	288

All figures are given for coil without pre-energization, at ambient temperature +23°C.

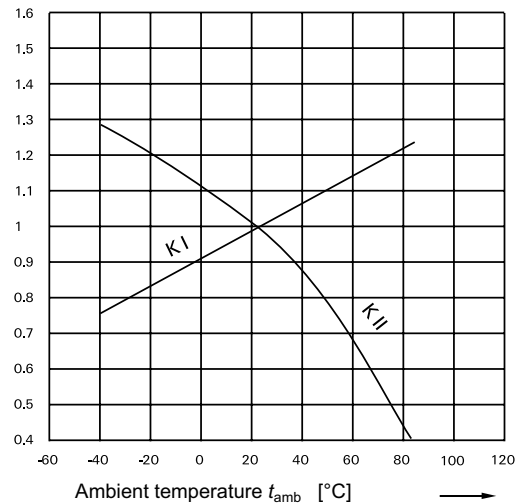
Coil versions, limiting operate voltage

Coil code	DIP flat, SIL, 1 form A	DIP flat, 1 form A with diode	DIP high, 1 form C	DIP high, 2 form A std, diode	DIP high, 1 form C diode+ shield	Mini SIL, 1 form A
	VDC	VDC	VDC	VDC	VDC	VDC
05	22.0	14.0	13.0	14.0	14.5	13.6
12	33.0	25.0	22.0	25.0	23.5	21.6
15	44.0	47.0	44.0	47.0	14.5	-
24	44.0	47.0	44.0	47.0	49.0	-

All figures are given for coil without pre-energization, at ambient temperature +23°C

Coil Data (continued)

Coil operative range



Coil operative range graphs

- U_I Minimum voltage at 23°C after pre-energizing with rated voltage without contact current
- U_{II} Maximum continuous voltage at 23°C
- The operating voltage limits U_I and U_{II} depend on the temperature according to the formula:
- U_{I t_{amb}} K_I × U_I 23°C and
- U_{II t_{amb}} K_{II} × U_{II} 23°C
- t_{amb} Ambient temperature
- U_{I t_{amb}} Minimum voltage at ambient temperature, t_{amb}
- U_{II t_{amb}} Maximum voltage at ambient temperature, t_{amb}
- K_I, K_{II} Factors (dependent on temperature), see diagram

Reed Relay V23100 -V4 (Continued)

Insulation Data

Initial dielectric strength	
between open contacts	
DIP and SIL, 1 form A (NO), 2 form A (2 NO)	250VDC
DIP, 1 form C (CO)	200VDC
Mini SIL, 1 form A (NO)	225VDC
between contact and coil	1500VDC
Initial insulation resistance at 500 VDC	
	>10 ⁹ Ω
Capacitance	
between open contacts	max. 1pF
between contact and coil	max. 2pF
between adjacent contacts	max. 1pF

Other Data

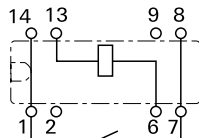
	form A	form C
Material compliance: EU RoHS/ELV, China RoHS, REACH, Halogen content refer to the Product Compliance Support Center at www.tycoelectronics.com/customersupport/rohssupportcenter		
Ambient temperature	-40 to +85°C	
Category of environmental protection	IEC 61810	
Degree of protection, IEC 60529	RT-III - immersion cleanable	
Vibration resistance (functional)	30g, 10 to 2000Hz	30g, 50 to 2000Hz
Shock resistance (functional), IEC 60068-2-27 (half sine),DIP and SIL 150g	50g	50g
	Mini SIL	50g
Terminal type	PCB-THT	
Resistance to soldering heat THT	265 °C / 10 s	
	IEC 60068-2-20	

Terminal assignment

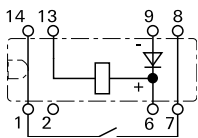
TOP view on component side of PCB

DIP, flat version

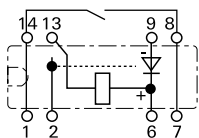
1 form A (NO)
standard
V23100-V4xxx-A000



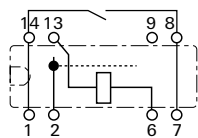
1 form A (NO)
with diode
V23100-V4xxx-A010



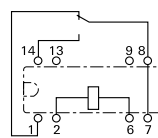
1 form A (NO)
with electrostatic shield + diode
V23100-V4xxx-A011



1 form A (NO)
with electrostatic shield
V23100-V4xxx-A001

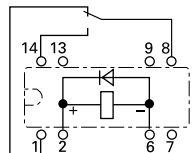


1 form C (CO)
standard
V23100-V4xxx-C000

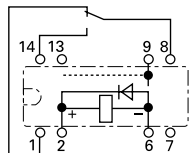


DIP, high version

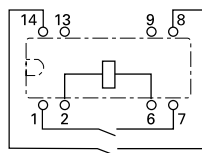
1 form C (CO)
with diode
V23100-V4xxx-C010



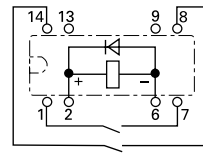
1 form C (CO)
with electrostatic shield + diode
V23100-V4xxx-C011



2 form A (NO)
standard
V23100-V43xx-B000

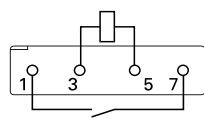


2 form A (NO)
with diode
V23100-V43xx-B010

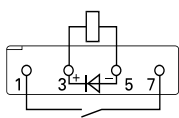


SIL version

1 form A (NO)
standard
V23100-V45xx-A000

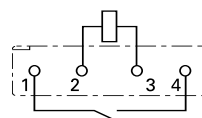


1 form A (NO)
with diode
V23100-V45xx-A010

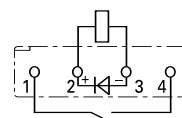


Mini SIL version

1 form A (NO)
standard
V23100-V46xx-A000



1 form A (NO)
with diode
V23100-V46xx-A010

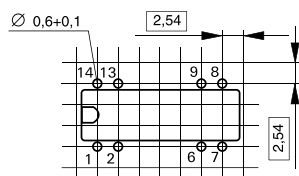


Reed Relay V23100 -V4 (Continued)

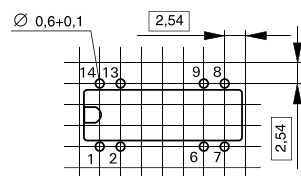
PCB layout

TOP view on component side of PCB

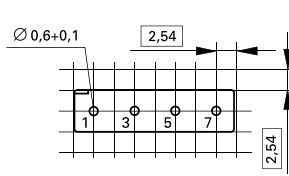
DIP, flat version



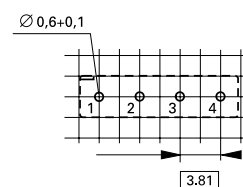
DIP, high version



SIL version

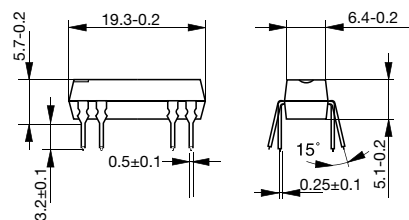


Mini SIL version

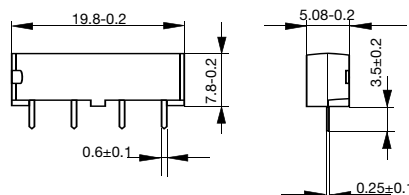


Dimensions

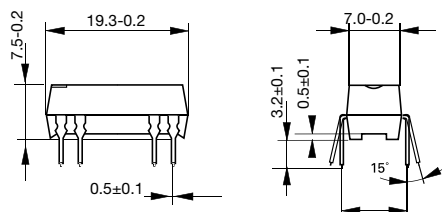
DIP, flat version



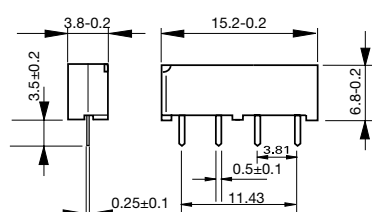
SIL version



DIP, high version



Mini SIL version



Product code structure

Typical product code **V23100-V4 0 05 A0 10**

Type

V23100-V4 Reed Relay, V23100-V4 Series

Version

- 0** DIP flat, 1 form A (NO) contact or 1 form C (CO) contact without diode
- 3** DIP high, 2 form A (NO) or 1 form C (CO) contacts
- 5** SIL, 1 form A (NO) contact
- 6** Mini SIL, 1 form A (NO) contact

Coil

Coil code: please refer to coil versions table

- 05** 5VDC coil
- 12** 12VDC coil
- 15** 15VDC coil
- 24** 24VDC coil

Contact arrangement

- A0** 1 form A (NO) contact, DIP flat or SIL package
- B0** 2 form A (NO) contacts, DIP high package
- C0** 1 form C (CO) contact, DIP high package

Coil circuit

- 00** Standard
- 10** With diode
- 11** With diode and electrostatic shield

Reed Relay V23100 -V4 (Continued)

Product Code	Version	Coil	Arrangement	Diode/shield	Part number			
V23100-V4005-A000	DIP flat	5VDC	1 form A (NO)	Standard	1393763-1			
V23100-V4012-A000		12VDC			1393763-6			
V23100-V4015-A000		15VDC			1-1393763-0			
V23100-V4024-A000		24VDC			1-1393763-4			
V23100-V4005-A010		5VDC			Diode	1393763-4		
V23100-V4012-A010		12VDC				1393763-8		
V23100-V4015-A010		15VDC				1-1393763-2		
V23100-V4024-A010		24VDC				1-1393763-6		
V23100-V4305-C000		5VDC				1 form C (CO)	Standard	2-1393763-0
V23100-V4312-C000		12VDC						2-1393763-8
V23100-V4315-C000	15VDC	3-1393763-4						
V23100-V4324-C000	24VDC	1 form A (NO)	Diode and shield	4-1393763-0				
V23100-V4005-A011	5VDC			1393763-3				
V23100-V4012-A011	12VDC			1393763-9				
V23100-V4015-A011	15VDC			1-1393763-3				
V23100-V4024-A011	24VDC			1-1393763-7				
V23100-V4305-B000	DIP high			5VDC	2 form A (NO)	Standard	1-1393763-8	
V23100-V4312-B000				12VDC			2-1393763-6	
V23100-V4315-B000				15VDC			3-1393763-2	
V23100-V4324-B000				24VDC			3-1393763-8	
V23100-V4305-B010				5VDC			Diode	1-1393763-9
V23100-V4312-B010				12VDC				2-1393763-7
V23100-V4315-B010		15VDC	3-1393763-3					
V23100-V4324-B010		24VDC	3-1393763-9					
V23100-V4305-C010		5VDC	1 form C (CO)	Standard				2-1393763-2
V23100-V4312-C010		12VDC						3-1393763-0
V23100-V4315-C010	15VDC	3-1393763-6						
V23100-V4324-C010	24VDC	4-1393763-2						
V23100-V4305-C011	5VDC	Diode and shield			2-1393763-3			
V23100-V4312-C011	12VDC				3-1393763-1			
V23100-V4315-C011	15VDC		3-1393763-7					
V23100-V4324-C011	24VDC		4-1393763-3					
V23100-V4505-A000	SIL		5VDC	1 form A (NO)	Standard	4-1393763-4		
V23100-V4512-A000		12VDC	4-1393763-7					
V23100-V4515-A000		15VDC	4-1393763-9					
V23100-V4524-A000		24VDC	5-1393763-1					
V23100-V4505-A010		5VDC	Diode			4-1393763-5		
V23100-V4512-A010		12VDC				4-1393763-8		
V23100-V4515-A010		15VDC				5-1393763-0		
V23100-V4524-A010		24VDC				5-1393763-2		
V23100-V4605-A000		Mini SIL				5VDC	Standard	1422026-2
V23100-V4612-A000						12VDC		1422026-3
V23100-V4605-A010	5VDC		Diode	1422026-5				
V23100-V4612-A010	12VDC			1422026-6				