



FCIconnect.com

Copyright FCI.

Configuration of Documents

1 2

A

A

B

B

C

C

D

D

P/N	Documents	No.	Title	CAT.No.
HFWS-25TAE1LF	Specification Connector dwg. Cable dwg.	SC-HFWS03 JSA96464 JSA96465 JSA96466 JSA96467 JSA95588 JSA95587	CONNECTOR USED FOR FPC/FFC WITH 1mm CONTACT SPACING COPING WITH AUTOMATIC MOUNTING & SMT CAT.NO.TABLE FOR 1mm SPACING SMT CONNECTOR 1mm SPACING SURFACE MOUNT FPC/FFC CONNECTOR CAT. NO. TABLE FOR PLASTIC TAPE PACKAGED 1mm SPACING SMT CONN. PLASTIC TAPE PACKAGED 1mm SPACING SMT CONNECTOR RECOMMENDED CABLE RECOMMENDED CABLE	HFWS-25TAE1LF HFWS-25TAE1LF HFWS-25TAE1LF HFWS-25TAE1LF HFWS-25TAE1LF HFWS-25TAE1LF HFWS-25TAE1LF
HFWS-25TAE1LF	Specification Connector dwg. Cable dwg.	SC-HFWS06 JSA97359 JSA97370 JSA97371 JSA97372 JSA97373	CONNECTOR USED FOR CIC WITH 1mm CONTACT SPACING COPING WITH AUTOMATIC MOUNTING & SMT CAT.NO.TABLE FOR 1mm SPACING SMT CONNECTOR 1mm SPACING SURFACE MOUNT FPC/FFC CONNECTOR CAT. NO. TABLE FOR PLASTIC TAPE PACKAGED 1mm SPACING SMT CONN. PLASTIC TAPE PACKAGED 1mm SPACING SMT CONNECTOR RECOMMENDED CABLE	HFWS-25TAE1LF HFWS-25TAE1LF HFWS-25TAE1LF HFWS-25TAE1LF HFWS-25TAE1LF HFWS-25TAE1LF
HFWS-25TBE1LF	Specification Connector dwg. Cable dwg.	SC-HFWS06 JSA97359 JSA97360 JSA97361 JSA97362 JSA97363	CONNECTOR USED FOR CIC WITH 1mm CONTACT SPACING COPING WITH AUTOMATIC MOUNTING & SMT CAT.NO.TABLE FOR 1mm SPACING SMT CONNECTOR 1mm SPACING SURFACE MOUNT FPC/FFC CONNECTOR CAT. NO. TABLE FOR PLASTIC TAPE PACKAGED 1mm SPACING SMT CONN. PLASTIC TAPE PACKAGED 1mm SPACING SMT CONNECTOR RECOMMENDED CABLE	HFWS-25TBE1LF HFWS-25TBE1LF HFWS-25TBE1LF HFWS-25TBE1LF HFWS-25TBE1LF HFWS-25TBE1LF
HFWS-65TAE1LF	Specification Connector dwg. Cable dwg.	SC-HFWS04 JSA96468 JSA96469 JSA96470 JSA96471 JSA93944	CONNECTOR USED FOR CIC WITH 1mm CONTACT SPACING COPING WITH AUTOMATIC MOUNTING & SMT CAT.NO.TABLE FOR 1mm SPACING SMT CONNECTOR 1mm SPACING SURFACE MOUNT CIC CONNECTOR CAT. NO. TABLE FOR PLASTIC TAPE PACKAGED 1mm SPACING SMT CONN. PLASTIC TAPE PACKAGED 1mm SPACING SMT CONNECTOR RECOMMENDED CABLE	HFWS-65TAE1LF HFWS-65TAE1LF HFWS-65TAE1LF HFWS-65TAE1LF HFWS-65TAE1LF HFWS-65TAE1LF

mat'l. code		surface 58 / tolerance ISO 1302 / ISO 406 / ISO 1101		projection		product family 580F		CODE JP		
ltr	ecn no	dr	date	tolerances unless otherwise specified		title		dwg no		
A	J05-0334	H.T	6/3/05	angles	linear	HFWS Documents Configuration (1mm Contact Spacing connector)		sheet 1 of 1		
B	J06-0435	H.T	10/26/06			mm		size		
C	J07-0481	H.T	2007-9-26			scale X		A4		
D	J07-0502	H.T	2007-10-10	dr	<i>R. Shovet</i> 2007-10-10			sheet 1 of 1		
				enr	<i>R. Shovet</i> 2007-10-10			JSA96472		
				chr	<i>R. Shovet</i> 2007-10-10			type Product Customer Drawing		
sheet index	revision sheet	D	1	appd	<i>S. Andrus</i> 2007-10-10			Rev D		

form: A4

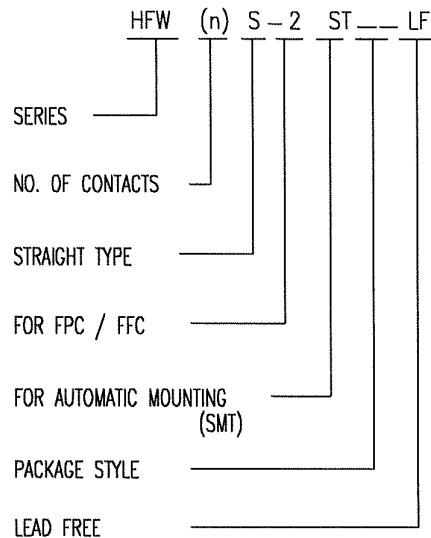
1

2

CAT. NO. & DIMENSIONS

(NOTE 3)	NO. OF CONTACTS (n)	CAT. NO.	DIMENSIONS (NOTE2)				
			A ± 0.2	B ± 0.2	C ± 0.2	D ± 0.2	E ± 0.2
	4	HFW4S-2ST__LF	7	5.14	3	—	—
	5	HFW5S-2ST__LF	8	6.14	4	—	—
	6	HFW6S-2ST__LF	9	7.14	5	—	—
	7	HFW7S-2ST__LF	10	8.14	6	—	—
	8	HFW8S-2ST__LF	11	9.14	7	—	—
	9	HFW9S-2ST__LF	12	10.14	8	0.35	7.3
	10	HFW10S-2ST__LF	13	11.14	9	0.35	8.3
	11	HFW11S-2ST__LF	14	12.14	10	1.35	7.3
	12	HFW12S-2ST__LF	15	13.14	11	1.35	8.3
	13	HFW13S-2ST__LF	16	14.14	12	2.35	7.3
	14	HFW14S-2ST__LF	17	15.14	13	2.35	8.3
	15	HFW15S-2ST__LF	18	16.14	14	3.35	7.3
	16	HFW16S-2ST__LF	19	17.14	15	3.35	8.3
	17	HFW17S-2ST__LF	20	18.14	16	4.35	7.3
	18	HFW18S-2ST__LF	21	19.14	17	4.35	8.3
	19	HFW19S-2ST__LF	22	20.14	18	5.35	7.3
	20	HFW20S-2ST__LF	23	21.14	19	5.35	8.3
	21	HFW21S-2ST__LF	24	22.14	20	6.35	7.3
	22	HFW22S-2ST__LF	25	23.14	21	6.35	8.3
	23	HFW23S-2ST__LF	26	24.14	22	7.35	7.3
	24	HFW24S-2ST__LF	27	25.14	23	7.35	8.3
	25	HFW25S-2ST__LF	28	26.14	24	8.35	7.3
	26	HFW26S-2ST__LF	29	27.14	25	8.35	8.3
	27	HFW27S-2ST__LF	30	28.14	26	9.35	7.3
	28	HFW28S-2ST__LF	31	29.14	27	9.35	8.3
	29	HFW29S-2ST__LF	32	30.14	28	10.35	7.3
	30	HFW30S-2ST__LF	33	31.14	29	10.35	8.3
*	31	HFW31S-2ST__LF	34	32.14	30	11.35	7.3
	32	HFW32S-2ST__LF	35	33.14	31	11.35	8.3
*	33	HFW33S-2ST__LF	36	34.14	32	12.35	7.3

CAT. NO.



NOTES

1. THIS PRODUCT IS THE CONNECTOR DSIGNED TO TERMINATE FPC/FFC AND COPEs WITH AUTOMATIC MOUNTING (SMT).
2. SEE PART DRAWINGS FOR DIMENSIONS A~E.
3. PLEASE CONSULT US IN CASE OF USING PARTS WITH * MARK.

A

A

B

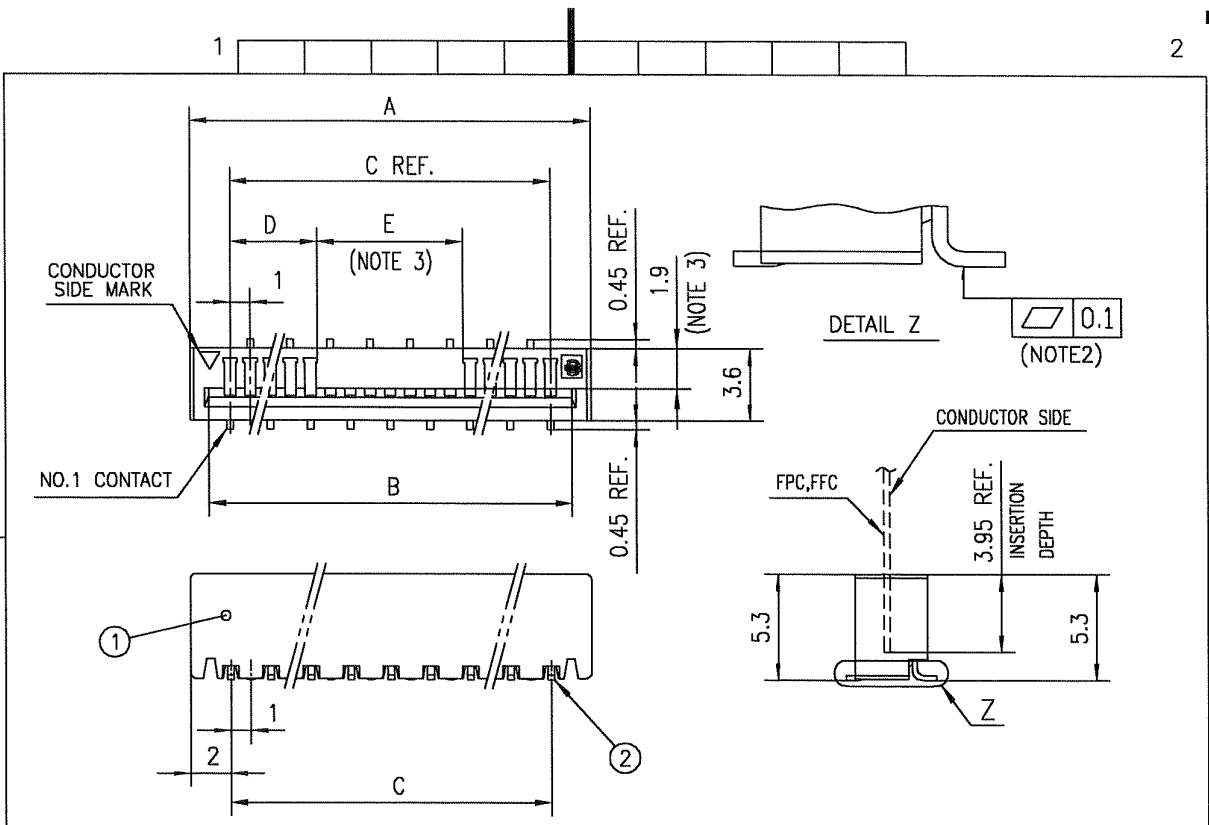
B

C

C

mat'l. code				surface 58 / tolerance ISO 406 / ISO 1302 ✓ / ISO 1101		projection		product family 580F		CODE JP	
ltr ecn no dr date				tolerances unless otherwise specified		mm		title CAT NO. TABLE FOR 1mm SPACING SMT CONNECTOR (CAT.No.HFW__S-2ST__LF)			
A J05-0334 H.T 6/3/05				angles linear		scale X		dwg no sheet 1 of 1 size			
B J06-0435 H.T 10/26/06						FCJ		JSA 96464 A4			
				dr 10/26/06				type Product Customer Drawing			
				enr 10/26/06							
				chr 10/26/06							
				appd 10/27/06							
sheet index		revision B sheet 1								Rev. B	

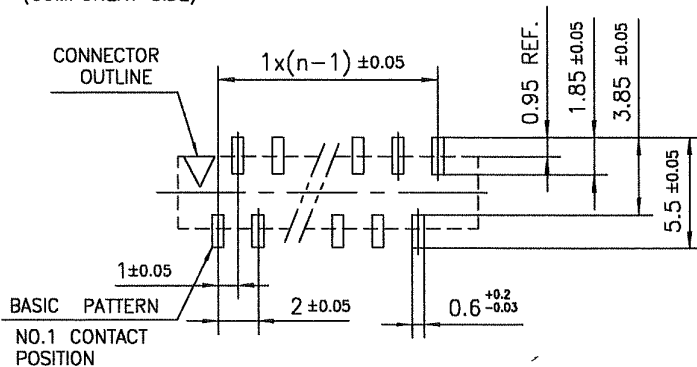
SC-HFWS03 JSA96465,96466,96467,93588,93587 form: A4



PT. NO.	PARTS NAME	MATERIAL	Q'TY	NOTE
1	HOUSING	PA6T RESIN GLASS REINFORCED (UL94V-0)	1	COLOR : BLACK
2	CONTACT	PHOSPHOR BRONZE	n	Ni UNDER Sn PLATING (LEAD FREE)

n : NO. OF CONTACTS

RECOMMENDED PC BOARD LAYOUT
(COMPONENT SIDE)



NOTES

1. THIS PRODUCT IS THE CONNECTOR DESIGNED TO TERMINATE FPC/FFC AND COPES WITH AUTOMATIC MOUNTING (SMT).
2. FLATNESS OF CONTACT TERMINAL MUST BE WITHIN TOLERANCE IN Z PORTION DETAILED DRAWING.
3. THIS DIMENSION IS SPACE FOR THE NOZZLE OF MOUNTER.
4. THIS PRODUCT MEETS EUROPEAN UNION DIRECTIVES AND OTHER COUNTRY REGULATIONS AS DESCRIBED IN GS-22-008
5. THE HOUSING WILL WITHSTAND EXPOSURE TO 260°C PEAK TEMPERATURE FOR 10 SECONDS IN A REFLOW SOLDERING OVEN.

mat'l. code				surface 58 ISO 1302		tolerance ISO 406 ISO 1101		projection		product family 580F		CODE JP	
litr ecn no dr date				tolerances unless otherwise specified		±0.2		mm		title 1mm SPACING SURFACE MOUNT FPC/FFC CONNECTOR (CAT.No.HFW__S-2ST__LF)			
A J05-0334 H.T 6/3/05				angles						dwg no sheet 1 of 1 size			
B J05-0731 H.T 10/28/05				linear						JSA 96465 A4			
C J06-0435 H.T 10/26/06								scale X		type Product Customer Drawing			
sheet index				revision sheet		C 1				Rev c			

SC-HFWS03 JSA96464
form: A4

1

2



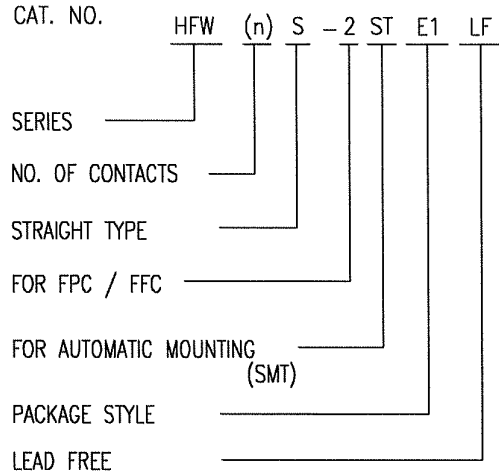
FCIconnect.com

Copyright FCI.



CAT. NO. & DIMENSIONS

(NOTE.4)	NO. OF CONTACTS (n)	CAT. NO. (NOTE2)	DIMENSIONS (NOTE3)		
			F ± 5	G ± 0.3	H ± 0.1
	4	HFW4S-2STE1LF	28.4	24	—
	5	HFW5S-2STE1LF	28.4	24	—
	6	HFW6S-2STE1LF	28.4	24	—
	7	HFW7S-2STE1LF	28.4	24	—
	8	HFW8S-2STE1LF	28.4	24	—
	9	HFW9S-2STE1LF	28.4	24	—
	10	HFW10S-2STE1LF	28.4	24	—
	11	HFW11S-2STE1LF	28.4	24	—
	12	HFW12S-2STE1LF	28.4	24	—
	13	HFW13S-2STE1LF	28.4	24	—
	14	HFW14S-2STE1LF	36.4	32	28.4
	15	HFW15S-2STE1LF	36.4	32	28.4
	16	HFW16S-2STE1LF	36.4	32	28.4
	17	HFW17S-2STE1LF	36.4	32	28.4
	18	HFW18S-2STE1LF	48.4	44	40.4
	19	HFW19S-2STE1LF	48.4	44	40.4
	20	HFW20S-2STE1LF	48.4	44	40.4
	21	HFW21S-2STE1LF	48.4	44	40.4
	22	HFW22S-2STE1LF	48.4	44	40.4
	23	HFW23S-2STE1LF	48.4	44	40.4
	24	HFW24S-2STE1LF	48.4	44	40.4
	25	HFW25S-2STE1LF	48.4	44	40.4
	26	HFW26S-2STE1LF	48.4	44	40.4
	27	HFW27S-2STE1LF	48.4	44	40.4
	28	HFW28S-2STE1LF	48.4	44	40.4
	29	HFW29S-2STE1LF	60.4	56	52.4
	30	HFW30S-2STE1LF	60.4	56	52.4
*	31	HFW31S-2STE1LF	60.4	56	52.4
	32	HFW32S-2STE1LF	60.4	56	52.4
*	33	HFW33S-2STE1LF	60.4	56	52.4



NOTES

1. THIS PRODUCT IS THE CONNECTOR DESIGNED TO TERMINATE FPC/FFC AND COPES WITH AUTOMATIC MOUNTING (SMT).
2. THIS CATALOG NO. INDICATES PLASTIC TAPE PACKAGED CONNECTOR.
3. SEE PART DRAWINGS FOR DIMENSIONS F~H.
4. PLEASE CONSULT US IN CASE OF USING PARTS WITH * MARK.

A

A

B

B

C

C

mat'l. code				surface 58 ISO 1302		tolerance ISO 406 ISO 1101		projection		product family 580F		CODE JP	
ltr	ecn no	dr	date	tolerances unless otherwise specified				mm		title			
A	J05-0334	H.T	6/3/05	angles	linear			scale X		CAT. NO. TABLE FOR PLASTIC TAPE PACKAGED 1mm SPACING SMT CONN. (CAT.No.HFW__S-2STE1LF)			
B	J06-0435	H.T	10/26/06					FCI		dwg no		sheet 1 of 1 size	
										JSA 96466		A4	
										type Product Customer Drawing			
sheet	revision	B										Rev. B	
index	sheet	1										D	

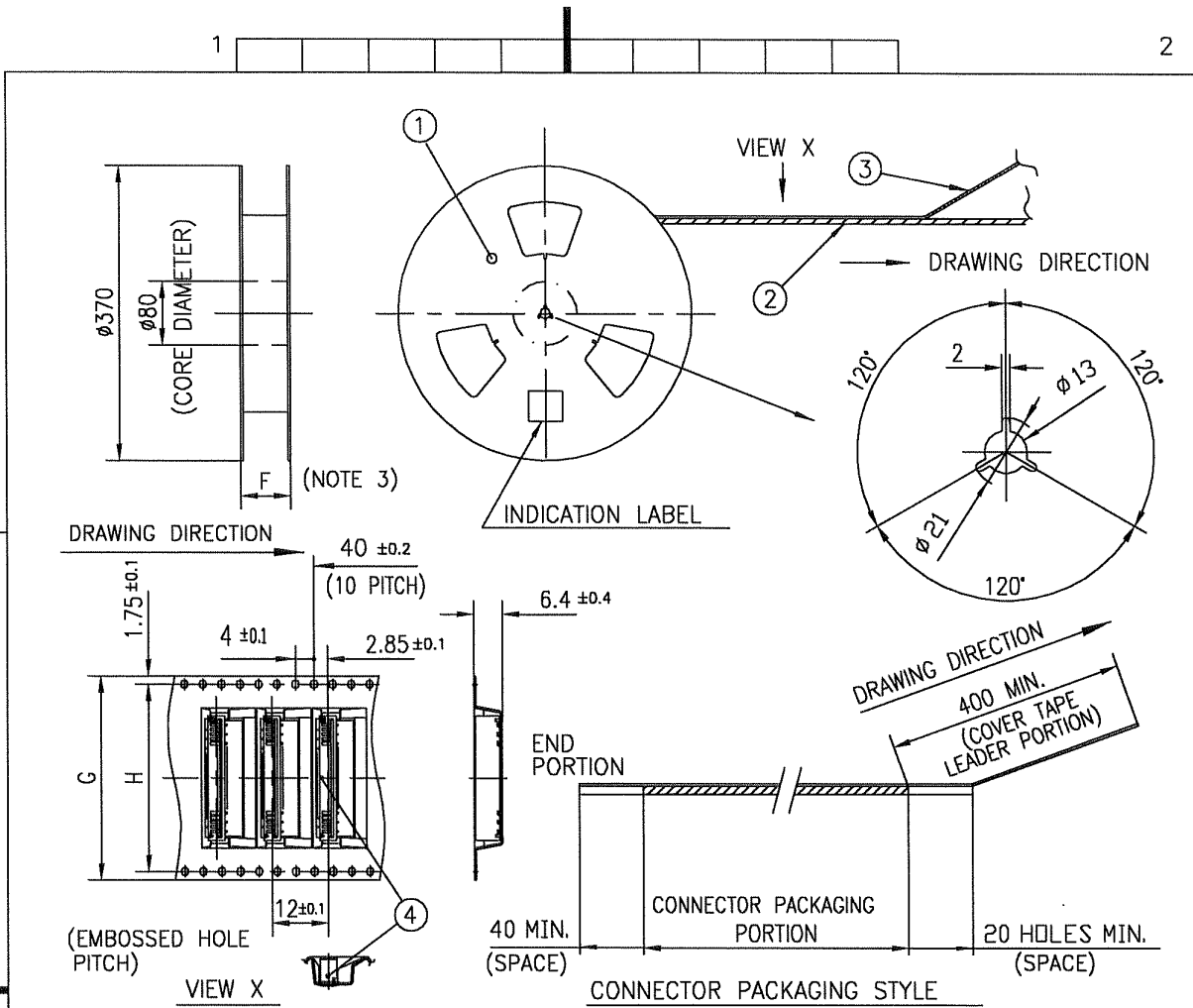
SC-HFWS03 JSA96464 96467
form: A4



FCIconnect.com

Copyright FCI.





PT. NO.	PARTS NAME	CAT. NO.	MATERIAL	Q'TY	NOTE
1	REEL	_____	CARDBOARD	1	COLOR:GRAY
2	PLASTIC (EMBOSSD) TAPE	_____	PET	_____	COLOR:TRANSPARENCY
3	COVER	_____	POLYESTER	_____	COLOR:TRANSPARENCY
4	CONNECTOR	HFW__S-2ST__LF	SEE ATTACHED DWG.	1000	_____

NOTES

1. THIS IS PLASTIC TAPE PACKAGED CONNECTOR USED FOR FPC/FFC AND COPELS WITH AUTOMATIC MOUNTING (SMT).
2. SEE JIS C 0806 (PACKING OF ELECTRONIC COMPONENTS ON CONTINUOUS TAPES (SURFACE MOUNTING DEVICES)) FOR SHAPE AND DIMENSIONS OF PLASTIC (EMBOSSD) TAPE AND REEL.
3. F DIMENSION IS PORTION OF THE CORE.

mat'l. code		surface 58 / tolerance ISO 1302 ✓ / ISO 406 / ISO 1101		projection	product family 580F	CODE JP	
ltr	ecn no	dr	date	tolerances unless otherwise specified	title		
A	J05-0334	H.T	6/3/05	angles ±5	PLASTIC TAPE PACKAGED 1mm SPACING SMT CONNECTOR (CAT.No.HFW__S-2STE1LF)		
B	J06-0435	H.T	10/26/06	linear ±5	mm		
				dr	scale X		
				enr	FCJ	dwg no sheet 1 of 1 size	
				chr		JSA 96467	A4
				appd		type Product Customer Drawing	
sheet index	revision sheet	B	1			Rev B	

SC-HFWS03 JSA96464 96466 form: A4

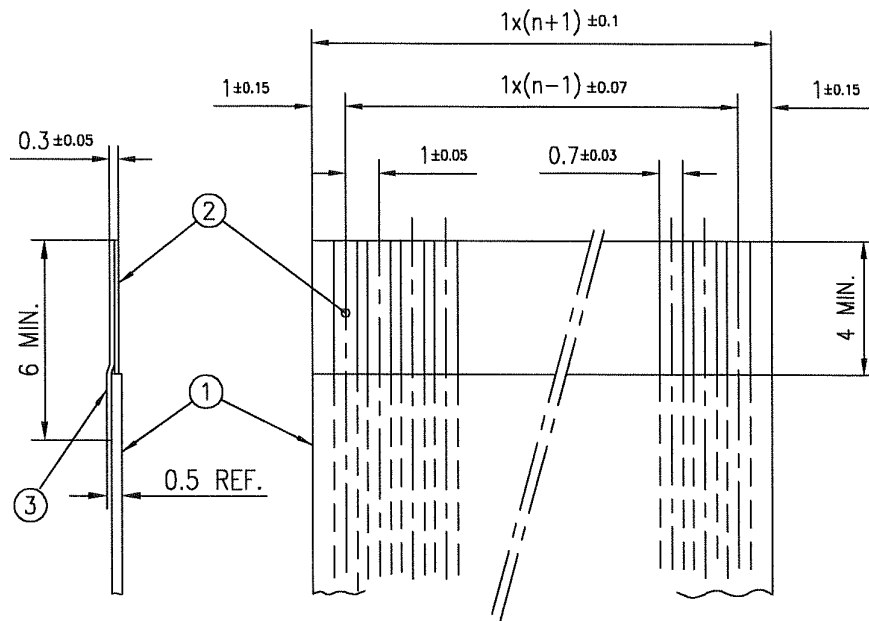


FCIconnect.com

Copyright FCI.

RECOMMENDED CABLE (FFC)

n : NO. OF CONDUCTOR



PT. NO.	DESCRIPTION	MATERIAL	NOTE
1	INSULATOR	FLAME RESISTING POLYESTER OR EQUIVALENT	_____
2	CONDUCTOR	COPPER FOIL	PLATING: TIN OR SOLDER 1µm MIN.
3	SUPPORTING TAPE	FLAME RESISTING POLYESTER OR EQUIVALENT	_____

NOTES

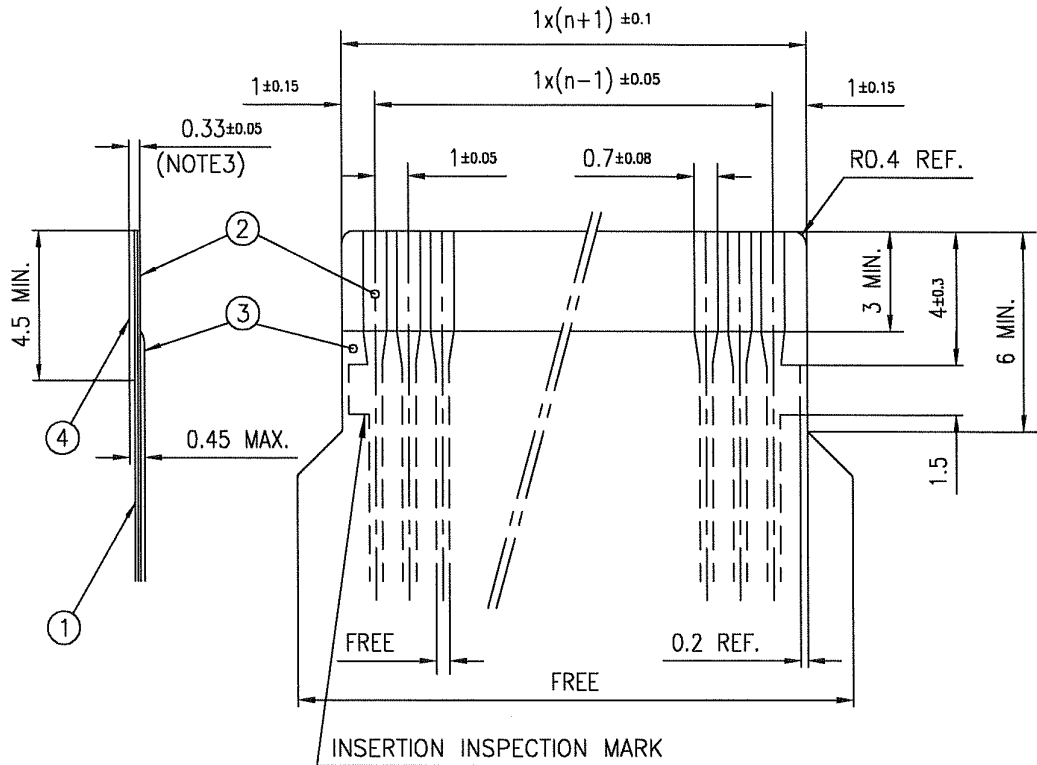
1. NO BURR AT EACH PORTION.
2. NO PEELING IN COMMON USE.

mat'l. code				surface 58 ISO 1302 ✓		tolerance ISO 406 ISO 1101		projection ⊕		product family 580F		CODE JP	
litr ecn no dr date				tolerances unless otherwise specified				mm		title RECOMMENDED CABLE (CAT.No.HFW__S-2ST__)			
AA J04-0334 H.T Oct.13,'04				angles		linear		scale X		dwg no JSA 93588		sheet 1 of 1 size A4	
AB J06-0435 H.T 10/26/'06				dr K. Shouji 10/26/06		enr K. Shouji 10/26/06		chr R. Shouji 10/26/06		appd S. Madam 10/27/06		type Product Customer Drawing	
sheet index		revision sheet		AB 1								Rev. AB	

form: A4

RECOMMENDED CABLE (FPC)

n : NO. OF CONDUCTORS



PT. NO.	DISCRIPTION	MATERIAL	THICKNESS (μm)
1	BASE FILM	POLYIMIDE OR POLYESTER OR EQUIVALENT	25
2	CONDUCTOR	COPPER FOIL(PLATING : SOLDER 1μm MIN.)	35
3	OVERLAY	POLYIMIDE OR POLYESTER OR EQUIVALENT	—
4	SUPPORTING TAPE	POLYESTER OR POLYIMIDE OR EQUIVALENT	188

NOTES

1. NO BURR AT EACH PORTION.
2. NO PEELING IN COMMON USE.
3. TOTAL THICKNESS LIMIT OF EACH MATERIAL (INCLUDING ADHESIVE AGENT) IS SPECIFIED.

mat'l. code				surface 58 ISO 1302	tolerance ISO 406 ISO 1101	projection 	product family 580F	CODE JP
ltr	ecn no	dr	date	tolerances unless otherwise specified		mm	title RECOMMENDED CABLE (CAT.No.HFW__S-2ST__)	
AA	J04-0334	H.T	Oct.13,'04	angles	linear			
AB	J06-0435	H.T	10/26/'06			scale	dwg no JSA 93587	
				dr	10/26/06		sheet 1 of 1	
				engr	10/26/06		size A4	
				chr	10/26/06		type Product Customer Drawing	
				appd	10/27/06			
sheet index	revision sheet	AB	1					Rev. AB

form: A4



FCIconnect.com

Copyright FCI.

