

RER-7 lenses for Luxeon Rebel LEDs (UPDATED 20100715)



RER-7-WW



RER-7-WW-PC

- Lens material optical grade PMMA with high UV and temperature resistance (105°C/220°F)
- High optical efficiency, >85%
- No lens holder. Attaching of the lens to customer's heat sink by gluing. For detailed mounting information, please look at the drawing
- Diameter 38 mm (MR11)

LENS TYPES

NAME	ORDERING CODE	FWHM Angle
RER-7 WW	C11231_RER-7-WW	±28°
RER-7 WW	C11254_RER-7-WW-PC	±29°

© Ledil Oy – PRELIMINARY - Subject to change without prior notice

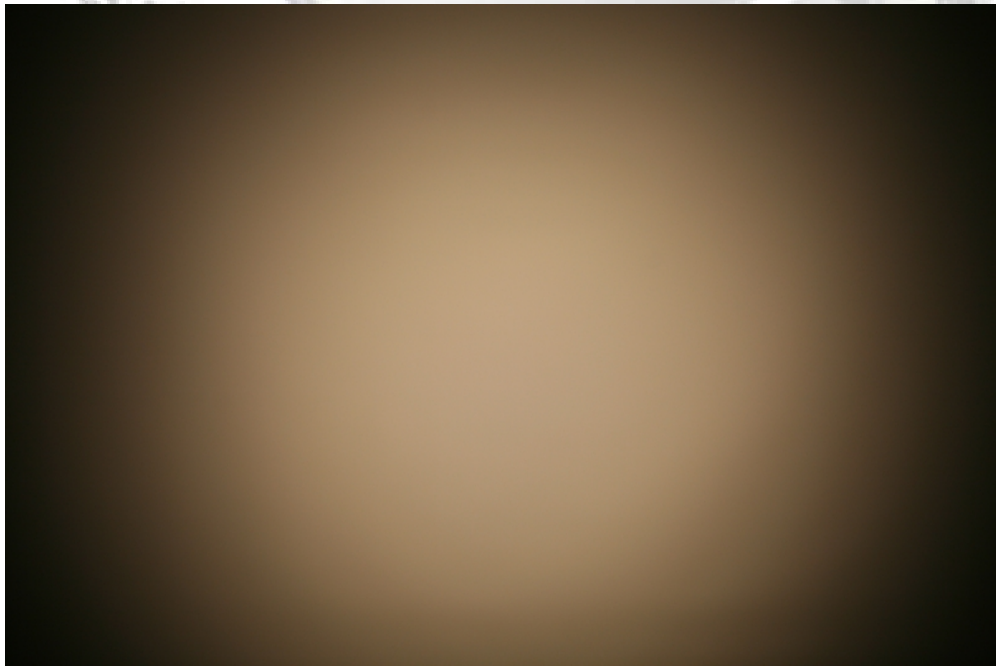
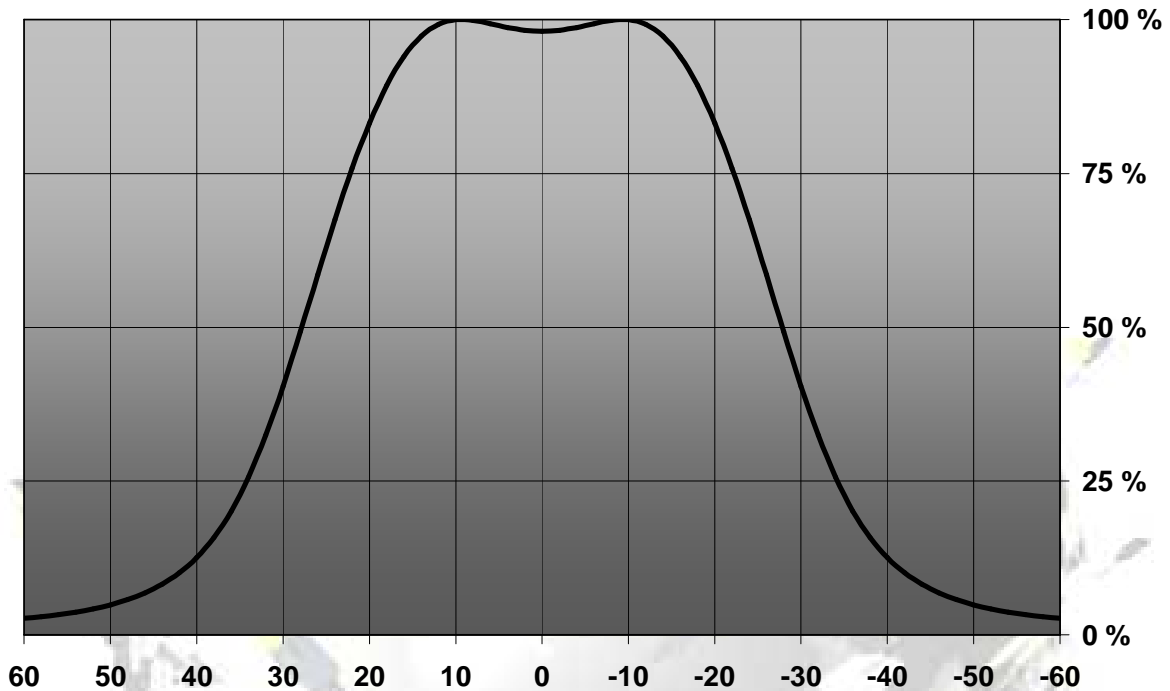
Ledil Oy
Tehdaskatu 13
FIN-24100 SALO, Finland

www.ledil.com
email: ledil@ledil.com
FAX: +358-2-733 8001

2010-07-15

MEASUREMENT & DRAWINGS

Relative Intensity of C11231_RER-7-WW



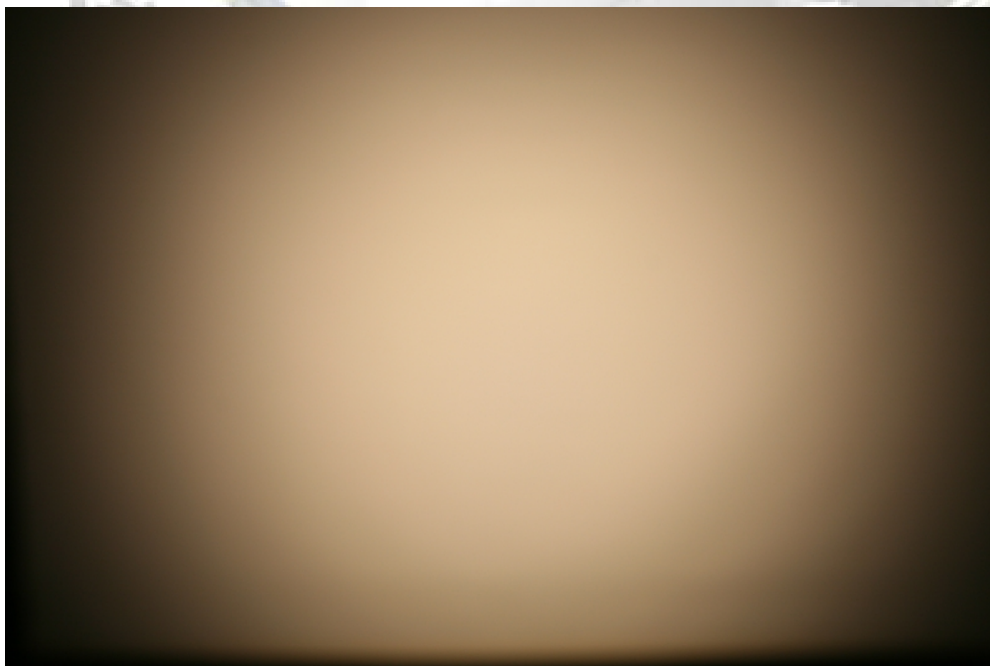
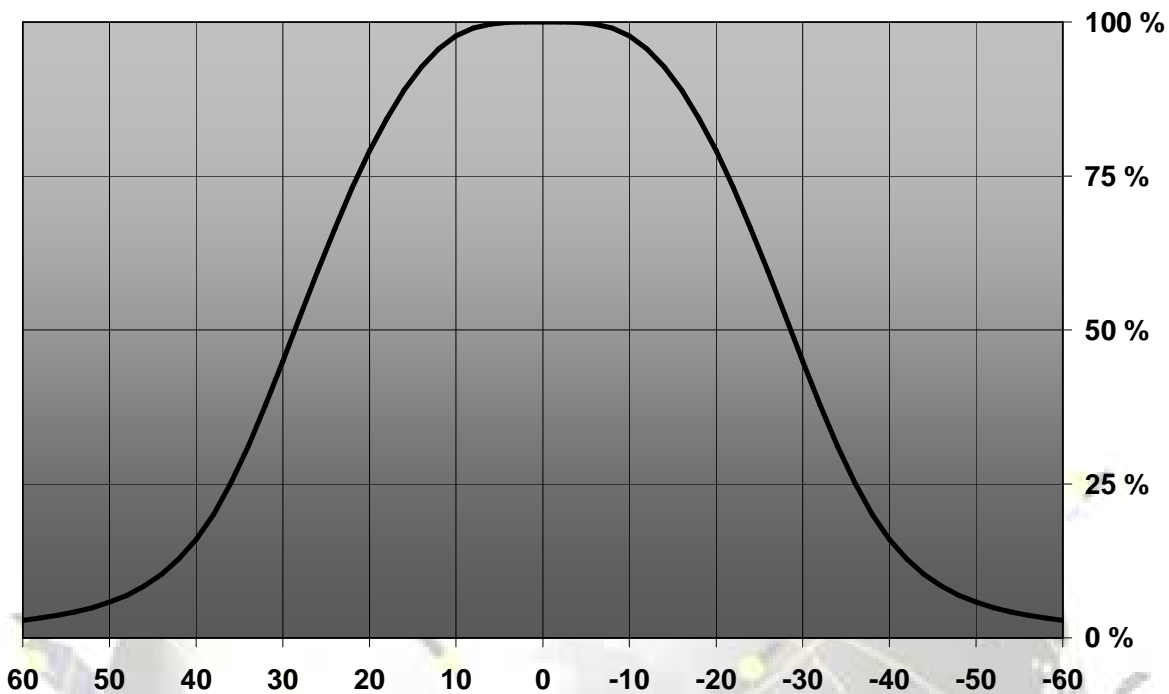
© Ledil Oy – PRELIMINARY - Subject to change without prior notice

Ledil Oy
 Tehdaskatu 13
 FIN-24100 SALO, Finland

www.ledil.com
 email: ledil@ledil.com
 FAX: +358-2-733 8001

2010-07-15

Relative Intensity of C11254_RER-7-WW-PC

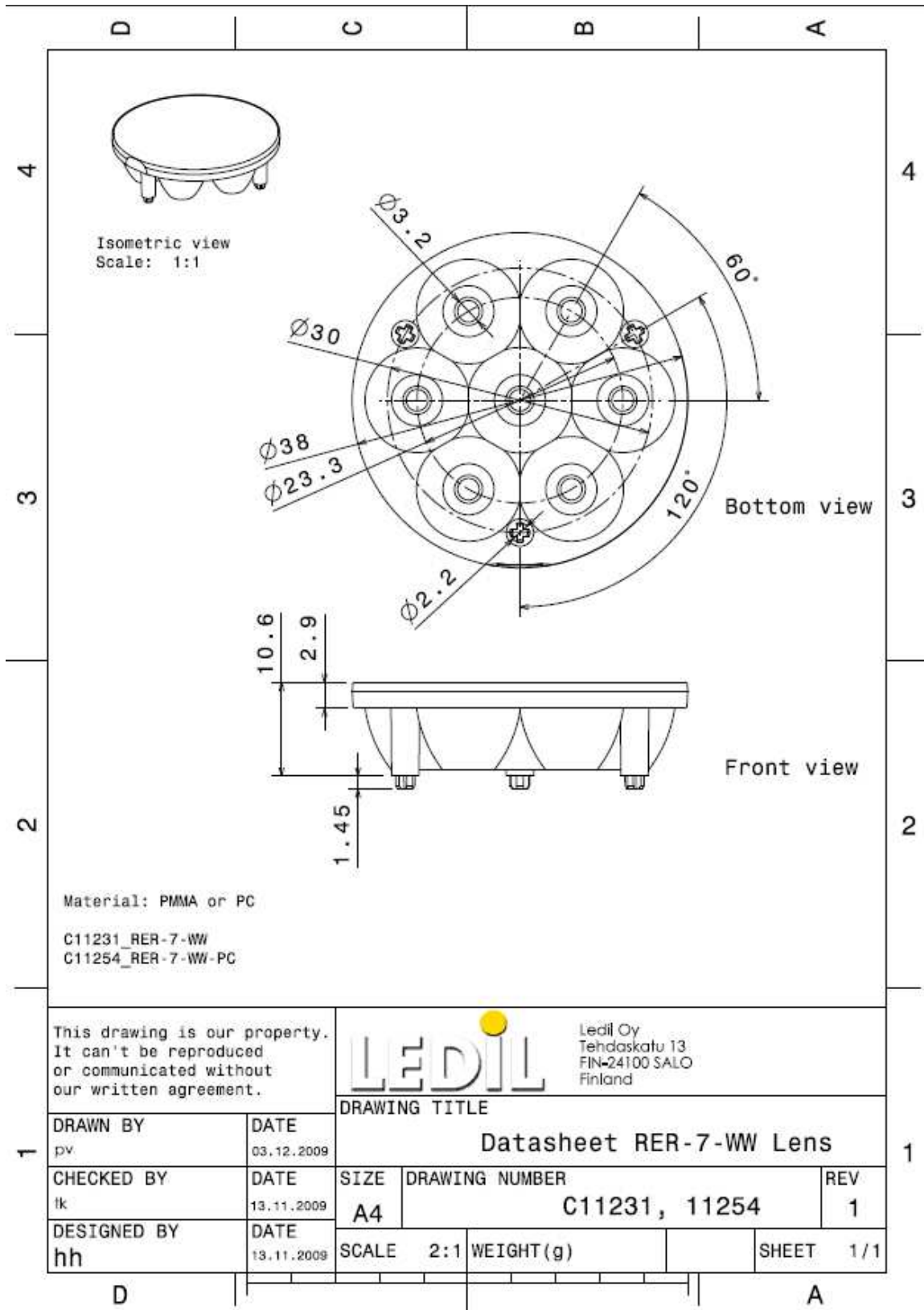


© Ledil Oy – PRELIMINARY - Subject to change without prior notice

Ledil Oy
Tehdaskatu 13
FIN-24100 SALO, Finland

www.ledil.com
email: ledil@ledil.com
FAX: +358-2-733 8001

2010-07-15



© Ledil Oy - PRELIMINARY - Subject to change without prior notice

Ledil Oy
Tehdaskatu 13
FIN-24100 SALO, Finland

www.ledil.com
email: ledil@ledil.com
FAX: +358-2-733 8001

2010-07-15