

PTC/CAD 20  
 DRAWN  
 S A V 29 NOV 99 CHECK JAF 29 NOV 99 CHECK  
 REVISIONS  
 A CO-94428  
 3 A 9  
 29 NOV 99  
 CHECK  
 3  
 OF  
 RELEASE NO. PR-21608  
 REPLACES  
 CATALOG LISTING  
 12TL124-10

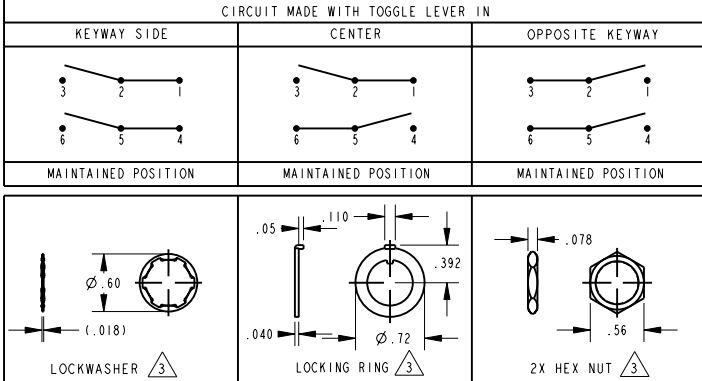
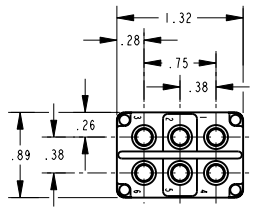
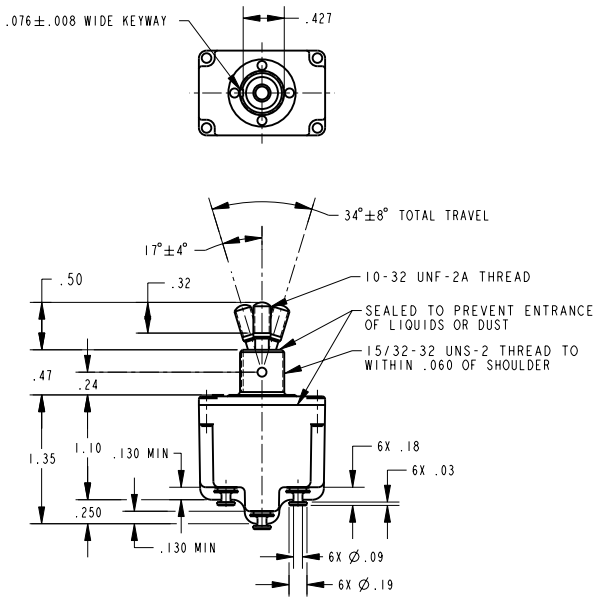
**MICRO SWITCH**  
 a Honeywell Division  
 FED. MFG. CODE 91929

**SWITCH - TOGGLE**

CATALOG LISTING  
**12TL124-10**

THIS DRAWING COVERS A PROPRIETARY ITEM AND IS THE PROPERTY OF MICRO SWITCH, A DIVISION OF HONEYWELL. THIS DRAWING IS NOT TO BE COPIED OR USED WITHOUT THE APPROVAL OF MICRO SWITCH

CURRENT CAPACITY (AMPS)							
RESISTIVE LOAD		LAMP LOAD		INDUCTIVE LOAD			
DC VOLTS	AC VOLTS	28 VDC	125 VAC	28 VDC	125 VAC	28 VDC	125 VAC
28	125	250	125	250	28	125	250
20	.75	.5	15	6	7	4	15



NOTES  
 1 - SWITCHES ARE CAPABLE OF WITHSTANDING A TEMPERATURE OF 160°F CONTINUOUSLY AT FULL RATED LOAD  
 2 - CIRCUIT DESIGNATION AND MICRO SWITCH CATALOG LISTING MARKED ON SIDE OF SWITCH  
 3 - FURNISHED UNASSEMBLED  
 4 - FOR TERMINAL COVER SEE MICRO SWITCH CATALOG LISTING 5PA8

ELECTRICAL RATING		THIRD ANGLE PROJECTION
L191	15A 125, 250, 277 VAC 1/2HP 125 VAC 1HP 250, 277 VAC 5A 125 VAC "L"	 SCALE FULL DO NOT SCALE PRINT UNLESS OTHERWISE SPECIFIED TOLERANCES ARE ONE PLACE (.01) ±.030 TWO PLACE (.00) ±.015 THREE PLACE (.000) ±.005 ANGLES ° WEIGHT