

MICRO SWITCH
a Honeywell Division

FED. MF6 CODE 91929

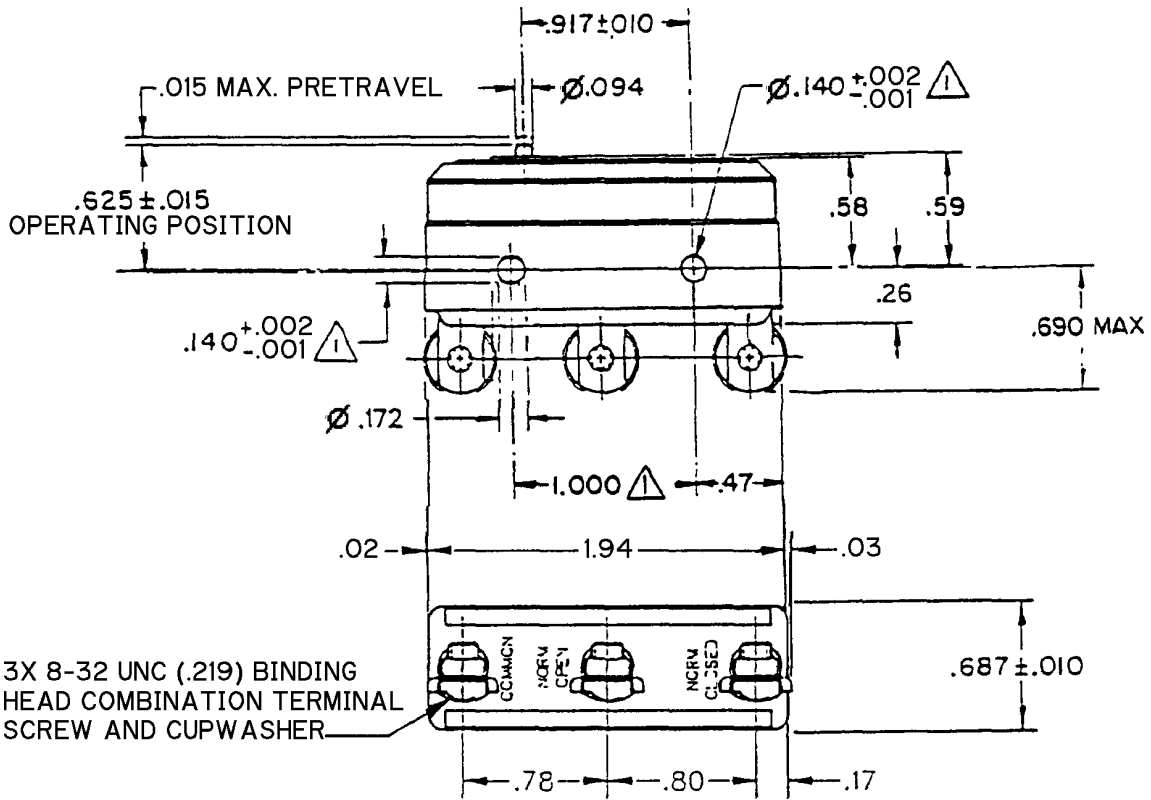
SWITCH - BASIC

CATALOG LISTING
BM-1R-P5

CATALOG LISTING
BM-1R-P5
PAGE 1 OF 1
ISSUE **2**

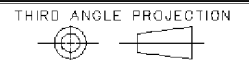
REVISIONS
A 0035411
JA
23NOV07

RELEASE NO. PR-22603
CHECK
ASD
23NOV07
CHECK
JJA
27FEB97
DRAWN
RASTER



NOTE
△ MOUNTING HOLES WILL ACCEPT PINS OR SCREWS
OF $\phi .139$ MAX ON $1.000 \pm .002$ CENTERS

THIS DRAWING COVERS A PROPRIETARY ITEM AND IS THE PROPERTY OF MICRO SWITCH, A DIVISION OF HONEYWELL. THIS DRAWING IS NOT TO BE COPIED OR USED WITHOUT THE APPROVAL OF MICRO SWITCH.



CHARACTERISTICS
OPERATING FORCE ----- 7 - 10.5 OZ
RELEASE FORCE ----- 4 OZ MIN
DIFFERENTIAL TRAVEL ----- .0003-.0010
OVERTRAVEL ----- .005 MIN

ELECTRICAL DATA
CONTACT ARRANGEMENT

L161 22A 125, 250 OR 480 VAC
1/2HP 125 VAC, 1HP 250 VAC

L288
L315
L318
22A 250V ~ T85 5E4

SCALE FULL DO NOT SCALE PRINT
UNLESS OTHERWISE SPECIFIED TOLERANCES ARE
ONE PLACE (.0) ± .030
TWO PLACE (.00) ± .015
THREE PLACE (.000) ± .005
ANGLES ±
WEIGHT .060 LB