

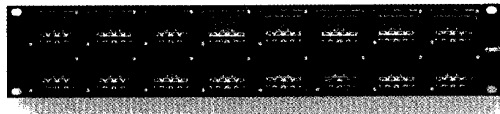
Category 6, ACO Single-Port Patch Panel Kits, Preloaded

Product Facts

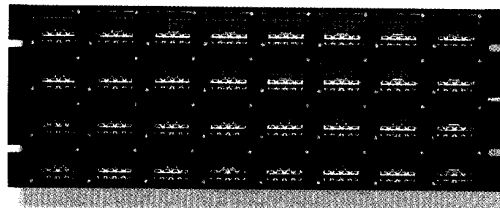
- :: Combines the flexibility and adaptability of the ACO System with the performance and headroom of Category 6
- :: Exceed TIA and ISO requirements for Category 6 component performance requirements
- :: Category 6 ACO Installation Kits are backwardly compatible with standard ACO Inserts
- :: Preloaded with Category 6 ACO Single-Port Installation Kits. Category 6 ACO Inserts purchased separately, see pages 84-87
- :: Fit standard 19" racks



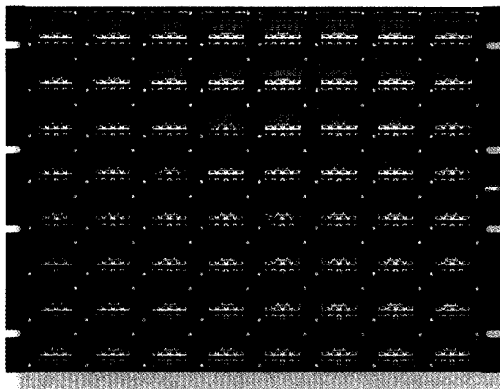
A



B



C



D

Description	Height	Width	Figure	Part Number
16-Port	Iconable 2U (3.50")	19"	A	Shielded 1479312-1*
				Unshielded 1479311-1*
16-Port	Non-Iconable 3U (5.25")	19"	B	Shielded 1479310-1
				Unshielded 1479309-1
32-Port	Non-Iconable 4U (7.00")	19"	C	Shielded 1479314-1
				Unshielded 1479313-1
64-Port	Non-Iconable 8U (14.00")	19"	D	Shielded 1479316-1
				Unshielded 1479315-1

*Note: Iconable patch panels accept AMP NETCONNECT Icons for identification. Icons are purchased separately (see page 283)

3.6

PATCH PANELS