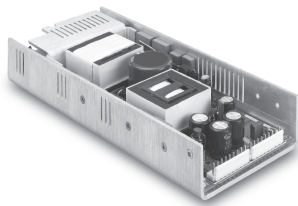


CFM350S

**350 WATT
SINGLE OUTPUT
AC-DC POWER SUPPLY
WITH PFC**



Features

- Universal Input: 90~264Vac
- 1U Low Profile
- EMI meets EN55022 Class B
- Active PFC Meets EN61000-3-2
- High Efficiency Up to 90%
- Remote Voltage Sense

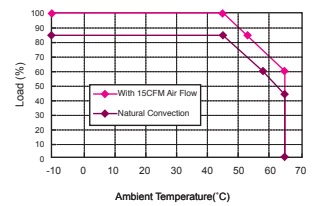


MODEL	VOLTAGE OUTPUT	OUTPUT CURRENT (A)		RIPPLE & NOISE ¹	VOLTAGE ACCURACY ²	LINE REG. ³	VOLTAGE ADJ. RANGE	LOAD REG. ⁴	EFFICIENCY (TYPICAL)
		RATED1	RATED2						
CFM350S-120	+12V	29.2	25	150mVp-p	± 2.0%	± 0.5%	10.8 ~ 13.2	± 1%	88%
CFM350S-150	+15V	23.35	20	150mVp-p	± 2.0%	± 0.5%	13.5 ~ 16.5	± 1%	88%
CFM350S-240	+24V	14.6	12.5	150mVp-p	± 2.0%	± 0.5%	21.6 ~ 26.4	± 1%	90%
CFM350S-360	+36V	9.73	8.4	150mVp-p	± 2.0%	± 0.5%	32.4 ~ 39.6	± 1%	90%
CFM350S-480	+48V	7.3	6.3	150mVp-p	± 2.0%	± 0.5%	43.2 ~ 52.8	± 1%	91%

Note: 1. RATED1: 15CFM Air Flow
2. RATED2: Natural Convection

Specifications	
INPUT SPECIFICATIONS:	
AC Input Voltage.....	90 ~ 264Vac
Frequency.....	47 to 63Hz
Inrush Current.....	.85A max. @230Vac
EMI.....	CISPR/FCC Class B
Isolation.....	input to output = 4242VDC
Leakage Current/240Vac.....	.2mA max.
OUTPUT SPECIFICATIONS:	
Total Rated Output Power.....	350W (with 15CFM air flow or optional fan)
Remote Voltage Sense.....	Compensates for wire Voltage drop
Hold-up Time.....	16mS typ.
Over Voltage Protection.....	Recycle AC input to restart
Over Temperature Protection.....	Auto Recovery
Short Circuit Protection.....	Auto Recovery
ENVIRONMENTAL CHARACTERISTICS:	
Operating Temperature.....	-10 ~ 65°C
PSU will be in thermal protection for exceeding the rated power output or the operating temperature	45~65°C with 25%/C Derating
Storage Temperature.....	-40 ~ 85°C
MECHANICAL CHARACTERISTICS:	
Dimensions.....	9.26x4.00x1.59inches (235.2x101.6x40.40mm)

CFM350S Series Derating Curve

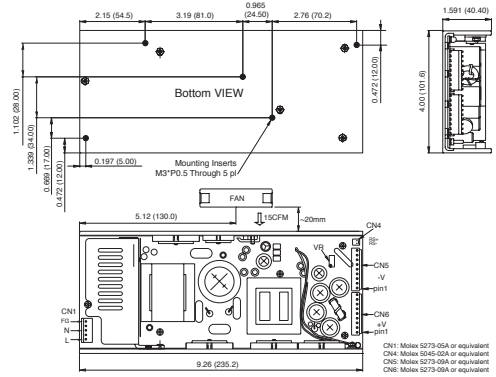


NOTE:

- 1: Add a 0.1uF ceramic capacitor and a 47uF EL capacitor to output for Ripple & Noise measuring @20kHz BW.
- 2: Voltage accuracy is set at 60% rated load and 25°C.Ta.
- 3: Line regulation is measured from High Line to Low Line with rated load.
- 4: Load regulation is measured at 60%&40% rated load.

Mechanical Specification

All Dimensions in Inches(mm)
Tolerance: inches: xxx±0.04, xxx±0.010
Millimeters: xxx±1.0, xxx±0.25



Typical at 25°C, nominal line and 60% load, unless otherwise Specified