




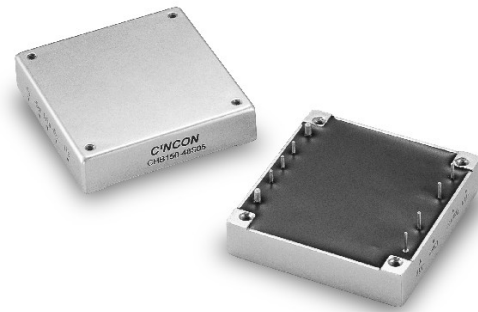
CHB150 SERIES

75 TO 150 WATT WIDE INPUT DC-DC CONVERTERS SINGLE OUTPUT



FEATURES

- * 75 - 150W Isolated Output
- * Efficiency to 89%
- * 500KHz Switching Frequency
- * 2 : 1 Input Range
- * Regulated Outputs
- * Continuous Short Circuit Protection
- * Five-Sided Metal Case
- * Half-Brick size meet industrial standard
- * CE Mark Meets 2004/108/EC
- * UL60950-1 Approval
- * Without Tantalum Capacitor inside
(V2.X Only, with  Label)



MODEL NUMBER	INPUT VOLTAGE	OUTPUT VOLTAGE	OUTPUT CURRENT		INPUT CURRENT		% EFF.	Capacitor Load max.
			MIN.	MAX.	NO LOAD	FULL LOAD		
CHB150-48S25	36-75 VDC	2.5 VDC	0mA	30A	25 mA	2A	77	30000uF
CHB150-48S33	36-75 VDC	3.3 VDC	0mA	30A	25 mA	2.5A	82	30000uF
CHB150-48S05	36-75 VDC	5 VDC	0mA	30A	25 mA	3.6A	86	30000uF
CHB150-48S12	36-75 VDC	12 VDC	0mA	12.5A	25 mA	3.5A	89	12500uF
CHB150-48S15	36-75 VDC	15 VDC	0mA	10A	25 mA	3.5A	89	10000uF
CHB150-48S24	36-75 VDC	24 VDC	0mA	6.25A	25 mA	3.5A	89	62500uF

NOTE: 1. Nominal Input Voltage 48VDC

