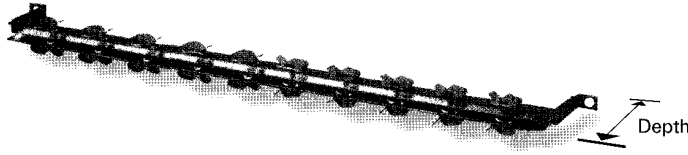


Cable Support Brackets



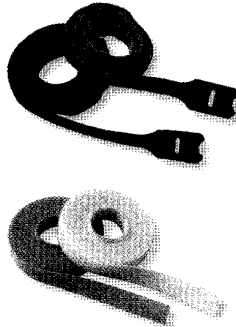
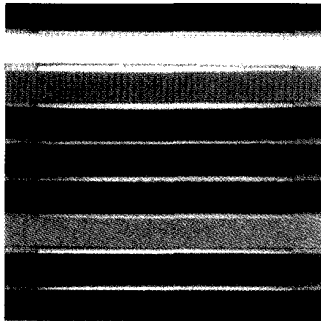
Description	Depth	Part Number
Cable Support Bracket	2 7/8"	556742-1
	4 1/2" (shown above)	556742-2

Product Facts

- :: Fit AMP Communications Outlet (ACO) Single-Port Patch Panels
- :: Provide additional support for heavier cables (such as Type 1)
- :: 16-Port panels accept one bracket
- :: 32-Port panels accept two brackets
- :: 64-port panels accept four brackets

3.6

VELCRO Cable Ties



Product Facts

- :: For 8-inch and 12-inch ties, an order quantity of one equals one roll of ten ties

Description	Part Number
1" x 8"	1375253-X
1" x 12"	1375254-X
5/8" x 5 yards	1375255-X
1" x 12" Flame Retardant*	1375256-2

X denotes color: -2 = Black, -3 = White, -4 = Gray, -5 = Orange, -6 = Blue, -7 = Red, -8 = Yellow, -9 = Green, 1--0 = Violet

*Note: Complies with NEC 300-22(c) and (d) for use in environmental air handling spaces. Available in Black only.

AMP-TY Nylon Cable Ties



Dimensions (Approximate)			Minimum Tensile Strength	Maximum Bundle Diameter in(mm)	Package Quantity	Color	Part Number
Length in(mm)	Width in(mm)	Thickness in(mm)					
4 (103.0)	0.096 (2.44)	0.037 (0.94)	18 lbs 80.1 N	0.75 (19.10)	1000	Natural	2-604771-9
						Black	2-604771-0
6 (155.0)	0.140 (3.56)	0.045 (1.14)	30 lbs 133.5 N	1.25 (31.75)	100	Natural	1-604771-9
						Black	1-604771-0
8 (204.0)	0.184 (4.67)	0.047 (1.19)	50 lbs 222.5 N	1.75 (44.45)	1000	Natural	2-603227-9
						Black	2-603227-0
12 (300.0)	0.183 (4.65)	0.051 (1.30)	50 lbs 222.5 N	3.00 (76.20)	100	Natural	1-603227-9
						Black	1-603227-0
12 (300.0)	0.183 (4.65)	0.051 (1.30)	50 lbs 222.5 N	3.00 (76.20)	1000	Natural	2-604772-9
						Black	2-604772-0
12 (300.0)	0.183 (4.65)	0.051 (1.30)	50 lbs 222.5 N	3.00 (76.20)	100	Natural	1-604772-9
						Black	1-604772-0
12 (300.0)	0.183 (4.65)	0.051 (1.30)	50 lbs 222.5 N	3.00 (76.20)	1000	Natural	2-604751-9
						Black	2-604751-0
12 (300.0)	0.183 (4.65)	0.051 (1.30)	50 lbs 222.5 N	3.00 (76.20)	100	Natural	1-604751-9
						Black	1-604751-0