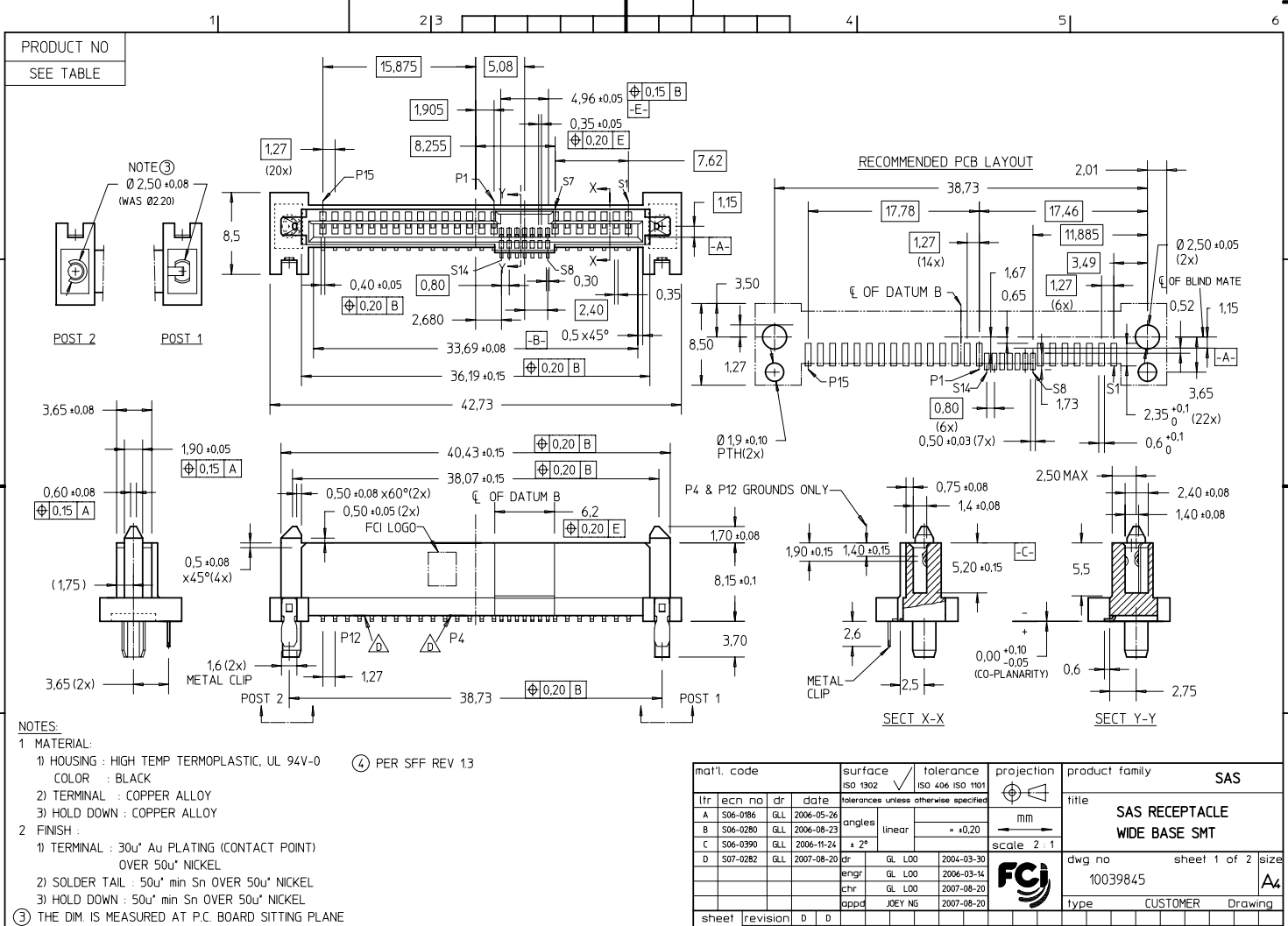


FCI CONFIDENTIAL  
 This document is the property of and embodies CONFIDENTIAL and PROPRIETARY information of FCI. No part of the information shown here may be reproduced, stored in a retrieval system, or used in any way or disclosed to others without the written consent of FCI.  
 Copyright © FCI



- NOTES:**
- MATERIAL:**
    - HOUSING : HIGH TEMP TERMOPLASTIC, UL 94V-0 (4) PER SFF REV 13  
COLOR : BLACK
    - TERMINAL : COPPER ALLOY
    - HOLD DOWN : COPPER ALLOY
  - FINISH :**
    - TERMINAL : 30u" Au PLATING (CONTACT POINT)  
OVER 50u" NICKEL
    - SOLDER TAIL : 50u" min Sn OVER 50u" NICKEL
    - HOLD DOWN : 50u" min Sn OVER 50u" NICKEL
- (3) THE DIM. IS MEASURED AT P.C. BOARD SITTING PLANE

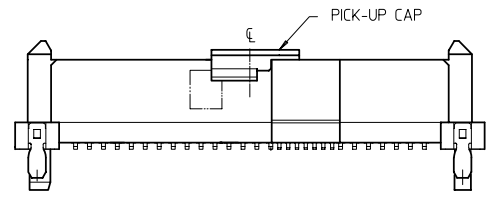
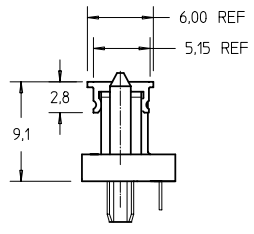
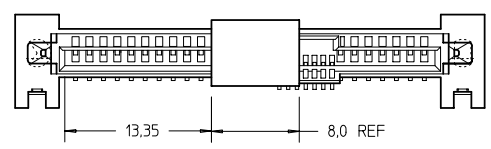
mat'l. code		surface	tolerance	projection	product family
		ISO 1302	ISO 406 ISO 1101		SAS
itr	ecn no	dr	date	tolerances unless otherwise specified	
A	S06-0186	GLL	2006-05-26	angles	mm
B	S06-0280	GLL	2006-08-23	linear	
C	S06-0390	GLL	2006-11-24	± 2°	scale 2 : 1
D	S07-0282	GLL	2007-08-20	dr	
				engr	
				chr	
				appd	
sheet	revision	D	D	scale 2 : 1	
index	sheet	1	2	title SAS RECEPTACLE WIDE BASE SMT dwg no 10039845 sheet 1 of 2 size A4 type CUSTOMER Drawing	

FCI CONFIDENTIAL

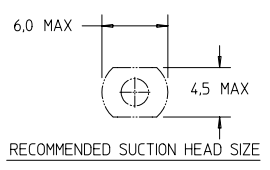
FCI CONFIDENTIAL  
The document is the property of and embodies CONFIDENTIAL and PROPRIETARY information of FCI. No part of the information shown on this drawing is to be disclosed, copied, or otherwise used without the written consent of FCI.  
Copyright © FCI

PRODUCT NO	PICK-UP CAP	PACKAGING	REMARK
10039845-001LF	NO	TRAY	--
10039845-001CLF	YES		
10039845-001C-TRLF	YES	TAPE & REEL	
10039845-051LF	NO	TRAY	NO PIN AT S8 TO S14

- NOTES
- ⑤ PART WITH PICK-UP CAP, P/N XXXXXXXX-XXXC LF
  - ⑥ THE STD PACKAGING IS IN TRAY
  - ⑦ FOR TAPE & REEL PACKAGING, SUFFIX '-TR' ADDED  
P/N XXXXXXXX-XXXC -TR LF
  - ⑧ THE HOUSING WILL WITHSTAND EXPOSURE TO 260°C PEAK TEMPERATURE FOR 10 SECONDS IN A CONVECTION, INFRA-RED OR VAPOR PHASE REFLOW OVEN
  - ⑨ THIS PRODUCT MEETS EUROPEAN UNION DIRECTIVES AND OTHER COUNTRY REGULATIONS AS DESCRIBED IN GS-22-008
  - ⑩ PART NUMBERS ENDING IN 'LF' MEANS FOR NOTE 8 LEAD FREE IDENTIFICATION
  - ⑪ A  $\Delta$  SYMBOL WILL BE NEXT TO ANY DIMENSION, VIEW, OR NOTE WHICH HAS BEEN MODIFIED WITH THE CURRENT DRAWING REVISION.



PART WITH PICK-UP CAP, SEE NOTE ⑤



mat'l. code		surface	tolerance	projection	product family
ISO 1302		ISO 406	ISO 1101	$\phi$	SAS
D		tolerances unless otherwise specified		mm	title
ecn no		angles	linear	mm	SAS RECEPTACLE
dr		$\pm 2^\circ$	$\pm 0.20$	scale 2:1	WIDE BASE SMT
date		dr	GL L00	2004-03-30	dwg no
		engr	GL L00	2006-03-14	10039845
		chr	GL L00	2007-08-20	sheet 2 of 2 size
		appd	JOEY NS	2007-08-20	A4
sheet index		revision sheet		1	type
					CUSTOMER Drawing