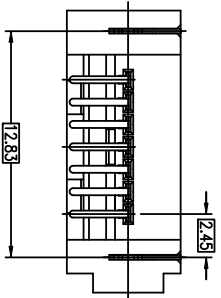
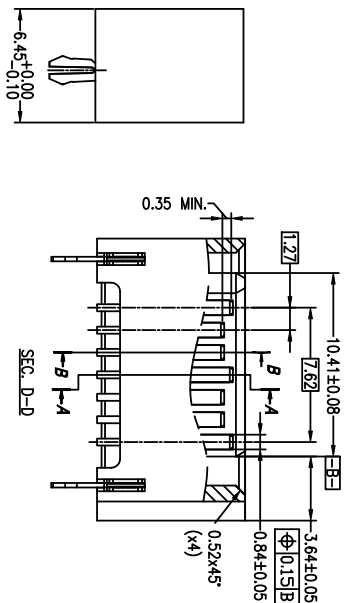
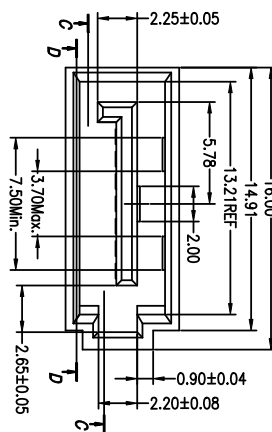
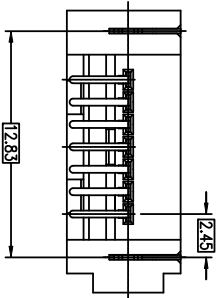
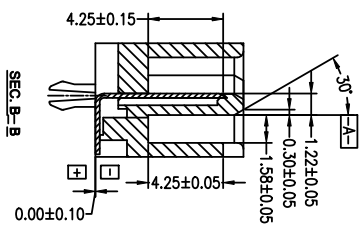
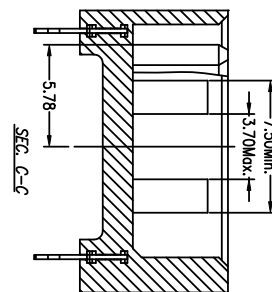




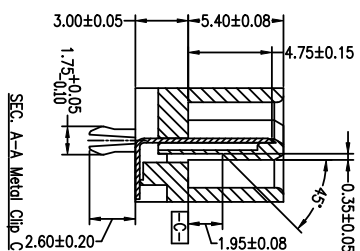
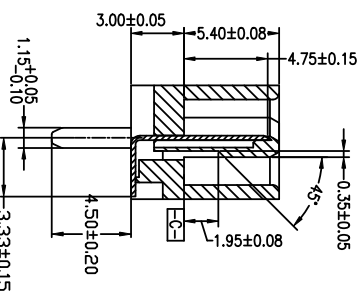
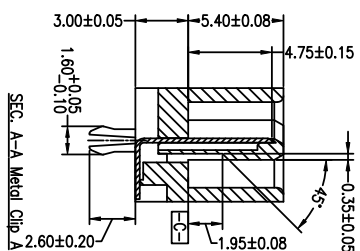
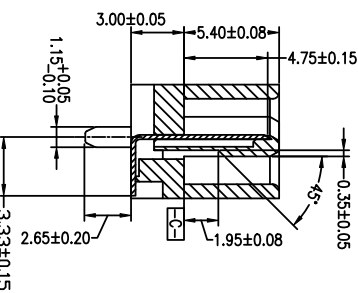
1 | 2



3 |



4



1 | 2

ACAD

3 |

4

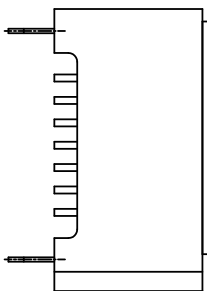
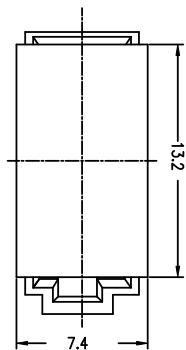
mat'l. code	ecn no.	dr	date	tolerances unless otherwise specified	CUSTOMER COPY	projection	title
H 109-1076	S.LIN	06/02/09	linear	X ± 0.30			S-ATA SIGNAL PLUG
B 106-0173	S.LIN	10/20/06		.XXX ± 0.10			SMT VERTICAL TYPE ASSY
C 107-1053	S.LIN	04/25/07	angles	0° ± 2°			
D 108-1013	S.LIN	01/23/08	dr	WADE LUU	MM		
E 108-1165	S.LIN	09/17/08	chr	WADE LUU		scde	
F 108-1165	S.LIN	09/17/08	chr	WADE LUU			
G 109-1061	S.LIN	04/30/09	pppd	STERLING LIN			
sheet index	revision	sheet	sheet	sheet	sheet	sheet	sheet
		1	2				

code code

1 of



1 | 2



PRODUCT WITH CAP FOR T & R PACKING

NOTES :

1. MATERIAL
 - i) HOUSING : HIGH TEMPERATURE THERMOPLASTIC UL94V-0
 - ii) TERMINAL : COPPER ALLOY
 - iii) HOLD DOWN : COPPER ALLOY
2. FINISH
 - i) TERMINAL : 15u" min Au PLATING AT CONTACT POINT
100u" min PURE MATT TIN OR GOLD FLASH PLATING AT SOLDER TAIL WITH NICKEL UNDERPLATE
 - ii) HOLD DOWN : 100-200 u" PURE MATT TIN PLATING.
3. P/N 10035691-XXXXL THE HOUSING WILL WITHSTAND EXPOSURE TO 260 DEGREE C PEAK TEMPERATURE FOR 10 SECONDS IN A REFLOW SOLDER APPLICATION WITH 1.6MM MINIMUM THICK CIRCUIT BOARD.
4. Packaging spec. GS-14-840.
5. Product Spec. GS-12-194.
6. Product Spec. 110-634 FOR 10035691-033LF, -023LF ONLY

3 |

6. PRODUCT NUMBERING:

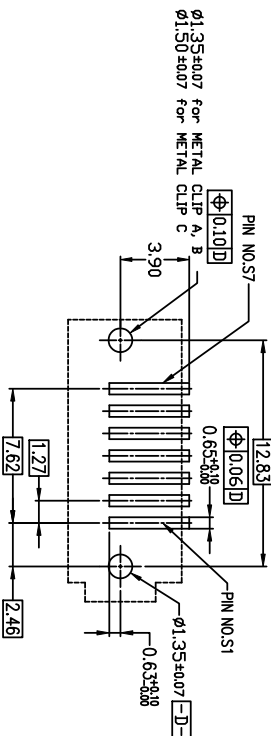
10035691-X X X X

BLANK: Plating Tin/Lead
LF: Plating Lead Free

- 2: Metal clip A with Tin at Solder Tail
- 3: Metal clip B with Tin at Solder Tail
- 4: Metal Clip B with G/F at Solder Tail
- 5: Metal Clip C with Tin at Solder Tail
- 6: Metal Clip D with G/F at Solder Tail
- S: Metal Clip B with Tin at Solder Tail
- 5u" Gold at Contact

- 0: Tube Packing
- 1: T&R Packing
- 2: T&R WITH CAP (NOTE 6)
- 3: TRAY WITH CAP (NOTE 6)
- Housing Color
- 0: Black
- 1: Blue

4



RECOMMENDED MOUNTING LAYOUT
RECOMMENDED PCB T = 1.60mm
TOLERANCE UNLESS OTHERWISE : ±0.1

1 | 2

mat'l. code		tolerances unless otherwise specified		CUSTOMER COPY		title	
ltr	ecn no	dr	date	lineor	projection	product family	SMT VERTICAL TYPE ASS'Y
H	T09-1076	S.Lin	06/02/09	lineor	MM	SATA	
B	T06-0173	S.Lin	10/20/06	.XXX ± 0.10			
C	T07-1053	S.Lin	04/25/07	angles 0° ±2°			
D	T08-1013	S.Lin	01/23/08	dr			
E	T08-1111	S.Lin	06/19/08	engr			
F	T08-1165	S.Lin	09/17/08	chr			
G	T09-1061	S.Lin	04/30/09	pppd			
sheet index	revision	H	H		scale	size	code
	sheet	1	2		NA	A4	TWN
						10035691	2 of

ACAD

3 |

code code

4