

**CHAMP .050 Series I Connectors, Printed Circuit Board Connectors (Continued)**

**Vertical Receptacles**

**Materials and Finish**

**Housing** — Glass filled nylon, rated 94V-0, black for standard. PPA, rated 94V-0 for High Temp.

**Contacts** — Phosphor bronze selectively plated with minimum of .000030 [0.00076] gold in mating area and tin-lead in solder tail area.

**Retention Leg (Board Lock)** — Brass, tin-lead plated.

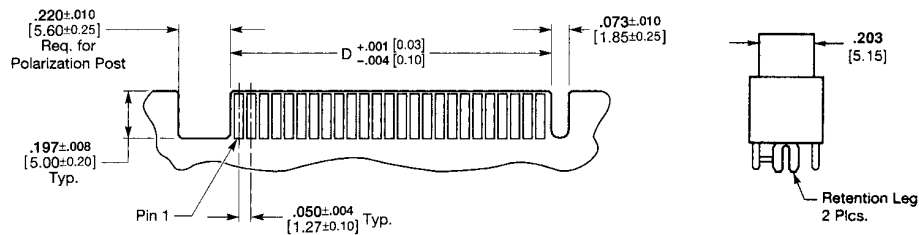
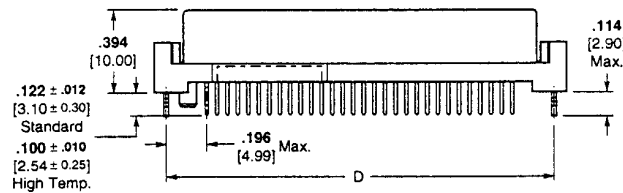
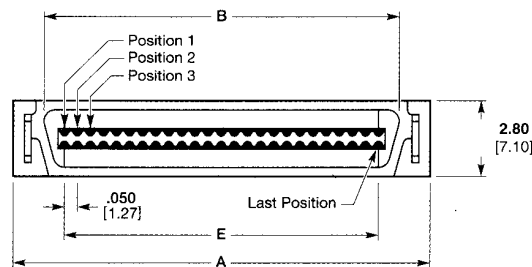
**Performance Specifications** — Page 19

**PC Board Accommodation** — .031 [0.79] to .063 [1.60] nominal thickness

**Mating Plug Connectors** —

Right Angle — Page 20  
Vertical — Page 22

**Mating Configurations** — Page 28



**Recommended PC Board Layout for Card-edge Applications**

Pos.	Dimensions						Keying Post <sup>2</sup>	w/o Post <sup>1</sup>	Part Number Standard Temp. w/o Post <sup>1</sup>
	A	B	C	D	E	F <sup>3</sup>			
20	.947 24.05	.668 16.97	.524 13.33	.843 21.41	.450 11.43	—	N/A	N/A	**3-175475-1
30	1.197 30.40	.918 23.32	.770 19.58	1.093 27.76	.700 17.78	—	—	N/A	5-175475-3
40	1.447 36.75	1.168 29.67	.985 25.03	1.343 34.11	.950 24.13	—	557103-5	N/A	5-175475-5
50	1.697 43.10	1.418 36.02	1.274 32.38	1.593 40.46	1.200 30.48	—	557103-9	786925-9 <sup>4</sup>	5-175475-6
60	1.947 49.45	1.668 42.37	1.524 38.73	1.843 46.81	1.450 36.83	—	1-557103-3	—	5-175475-7
68	2.147 54.53	1.868 47.45	1.724 43.81	2.043 51.89	1.650 41.91	—	1-557103-7	1-786925-7 <sup>4</sup>	5-175475-8
80	2.447 62.15	2.168 55.07	2.024 51.43	2.343 59.51	1.950 49.53	—	*2-557103-1	2-786925-1 <sup>4</sup>	5-175475-9
100	2.947 74.85	2.668 67.77	2.131 54.13	2.843 72.21	2.450 62.23	—	*2-557103-5	N/A	6-175475-0
120	3.447 87.55	3.418 86.82	3.024 76.83	3.343 84.91	2.950 74.93	1.671 42.44	2-557103-9	N/A	6-175475-1
130	3.697 93.90	3.406 86.52	3.274 83.18	3.593 91.26	3.200 81.28	1.796 45.59	—	3-786925-3 <sup>4</sup>	6-175475-2
140	3.947 100.25	3.668 93.17	3.524 89.51	3.843 97.61	3.450 87.63	1.922 48.82	—	N/A	N/A
160	4.447 112.95	4.160 105.87	4.024 102.21	4.343 110.31	3.950 100.33	2.171 55.14	3-557103-7	N/A	N/A
200	5.447 138.35	5.168 131.27	5.024 127.61	5.343 135.71	4.950 125.73	2.671 67.84	4-557103-1	N/A	N/A

<sup>1</sup> End Board Locks.

<sup>2</sup> End Board Locks and Keying Post.

<sup>3</sup> End and Center Board Locks and Keying Post. (See PC Board Layout Page 10).

<sup>4</sup> Contact Tyco Electronics for RoHS Part Number information.

\*Part Numbers without board locks are available — Contact Tyco Electronics at the numbers listed below.

\*\*Plating — .000020 [.00050] Minimum Gold.