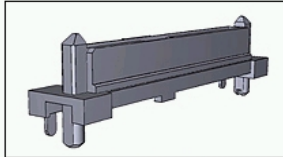


## 1735105-2 Product Details



1735105-2

TE Internal Number: 1735105-2

Active

[View 3D PDF](#)

### Serial ATA & Serial Attached SCSI

Always EU RoHS/ELV Compliant ([Statement of Compliance](#))

#### Product Highlights:

- Connector
- Receptacle
- Without Shell
- 29 Positions
- Number of Rows = Single

[View all Features](#)

### Have a Question?

Chat with a Product Information Specialist



#### Quick Links

- ▶ [Check Pricing & Availability](#)
- ▶ [Search for Tooling](#)
- ▶ [Product Feature Selector](#)
- ▶ [Contact Us About This Product](#)

[Add to My Part List](#) [Request Sample](#) [Find Similar Products](#) [Buy Product](#)

### Documentation & Additional Information

#### Product Drawings:

- [SAS BACKPLANE RECEPTACLE, VERTICAL, SMT](#) (PDF, English)

#### Catalog Pages/Data Sheets:

- None Available

#### Product Specifications:

- None Available

#### Application Specifications:

- None Available

#### Instruction Sheets:

- None Available

#### CAD Files: ([CAD Format & Compression Information](#))

- [2D Drawing](#) (DXF, Version A)
- [3D Model](#) (IGES, Version A)
- [3D Model](#) (STEP, Version A)

#### Related Products:

- [Tooling](#)

[List all Documents](#)

### Product Features (Please use the Product Drawing for all design activity)

#### Product Type Features:

- [Product Type](#) = Connector
- [Gender](#) = Receptacle
- [PCB Mount Angle](#) = Vertical
- [Receptacle Configuration](#) = SAS Backplane
- [PCB Mount Style](#) = Surface Mount
- [PCB Mount Retention](#) = With

#### Mechanical Attachment:

- Stackable = No
- Boardlock Material = Copper Alloy
- Boardlock Type = ZIF

#### Termination Related Features:

- Solder Tail Contact Plating = Matte Tin over Nickel (50)

#### Body Related Features:

- [Number of Positions](#) = 29
- [Number of Rows](#) = Single
- [PCB Mount Retention Type](#) = Hold Down Post(s)
- Mount Type = Printed Circuit Board

#### Contact Related Features:

- Contact Base Material = Copper Alloy
- [Contact Plating, Mating Area, Material](#) = Gold Flash

#### Housing Related Features:

- Housing Material = High Temperature Thermoplastic
- Housing Color = Black
- UL Flammability Rating = UL 94V-0

#### Configuration Related Features:

- Shell = Without

#### Industry Standards:

- [RoHS/ELV Compliance](#) = RoHS compliant, ELV compliant
- [Lead Free Solder Processes](#) = Reflow solder capable to 245°C, Reflow solder capable to 260°C
- RoHS/ELV Compliance History = Always was RoHS compliant

#### Conditions for Usage:

- [High Temperature Housing](#) = Yes

#### Packaging Related Features:

- Packaging Method = Tray

#### Other:

- Brand = Tyco Electronics

BOOKMARK

#### Corporate Information

[Who We Are](#)  
[Investors](#)  
[News Room](#)  
[Supplier Portal](#)  
[Careers](#)

#### Quick Links

[Check Distributor Inventory](#)  
[Cross Reference](#)  
[Find Documents & Drawings](#)  
[Product Compliance Support Center](#)  
[Site Map](#)

#### Customer Support

[Email or Chat with Us](#)  
[Find a Phone Number](#)  
[Search Knowledge Base](#)  
[Manage Your Account](#)

#### Sign up for our eNewsletter

Enter your email address

#### Follow Us On:



#### Visit Us On:

