

DWG. NO. SD-52409-006

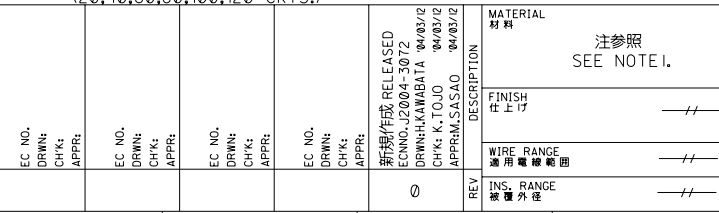
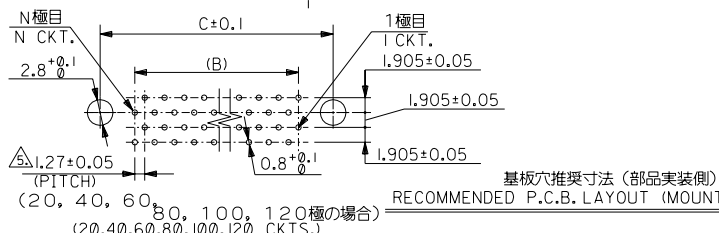
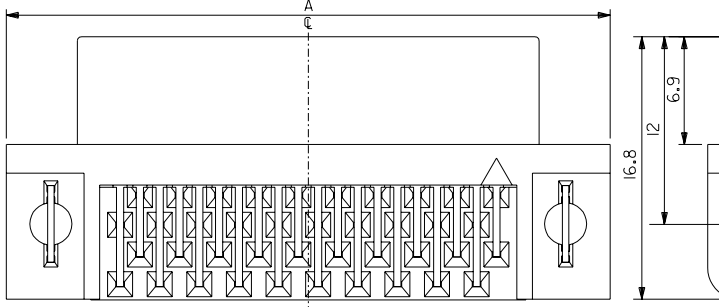
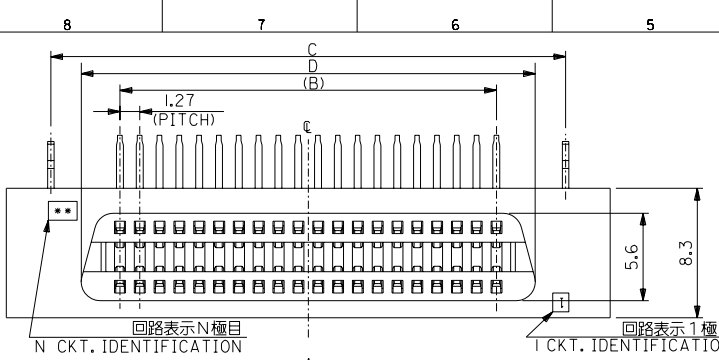
F

D

C

B

DO NOT SCALE DRAWING



- 注) 1.材質 MATERIAL
 HOUSING : GLASS FILLED POLYESTER, UL94V-0, COLOR:BLACK
 TERMINAL : PHOSPHOR BRONZE
 METAL PEG: PHOSPHOR BRONZE
- 2.メッキ仕様 PLATING
 接点部金メッキ : 0.1 MICROMETER MIN.
 CONTACT AREA : GOLD 0.1 MICROMETER MIN.
 半田付け部 : 錫メッキ 1.0 MICROMETER MIN.
 SOLDER AREA : TIN 1.0 MICROMETER MIN.
 下地メッキ : ニッケルメッキ 1.0 MICROMETER MIN.
 UNDER-PLATE : NICKEL 1.0 MICROMETER MIN.
- 3.推奨基板厚 : ±1.6±0.05
 RECOMMENDED P.C.B. THICKNESS : ±1.6±0.05
4. 嵌合相手 : 52340, 52411, 52327, 52412 シリーズ
 TO MATE WITH MOLEX : 52340, 52411, 52327, 52412 SERIES.
- △ 公差非累積 TOLERANCE NOT TO BE CUMULATIVE
6. 金属ペグ無しの製品は、52410-***1
 52410-***1: PRODUCT WITHOUT METAL PEG
7. 本製品は 52409-**01 の鉛フリー品である。
 THIS PRODUCT IS LEAD FREE OF 52409-**01.

79.90	83.82	74.93	89.50	52409-1271	120
67.20	71.12	62.23	76.80	-1071	100
54.50	58.42	49.53	64.10	-0871	80
41.80	45.72	36.83	51.40	-0671	60
35.45	39.37	30.48	45.05	-0571	50
29.10	33.02	24.13	38.70	-0471	40
22.75	26.67	17.78	32.35	-0371	30
16.40	20.32	11.43	26.00	52409-0271	20

MODEL NO. 52409-**71		DIMENSIONS:		SHT	REV
GENERAL TOLERANCES: (UNLESS SPECIFIED)		SCALE		DESIGN UNITS	
10 UNDER 未滿		—		mm □ INCH	
10 OVER 以上		+0.2		THIRD ANGLE PROJECTION	
30 UNDER 未滿		+0.25		□ mm □ INCH □ mm ONLY	
30 OVER 以上		+0.3		REVISE ON CAD ONLY	
ANGLE 角度		+3°		TITLE:	
CAD FILENAME		SD-52409-006.S01		1.27 B TO B RIGHT-ANGLE REC. ASS'Y -LEAD FREE-	
MATERIAL NO.		SEE CHART		MOLEX INCORPORATED	
DRAWING NO.		SD-52409-006		SHEET NO. 1 OF 1	
THIS DRAWING CONTAINS INFORMATION THAT IS PROPRIETARY TO MOLEX INCORPORATED AND SHOULD NOT BE USED WITHOUT WRITTEN PERMISSION.		SIZE B		EN-02J(097) MXJ-54	

8 7 6 5 4 3 2 1