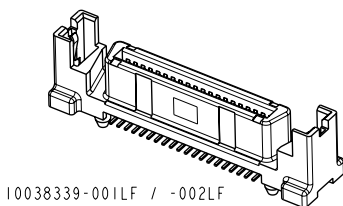
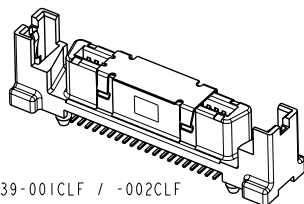


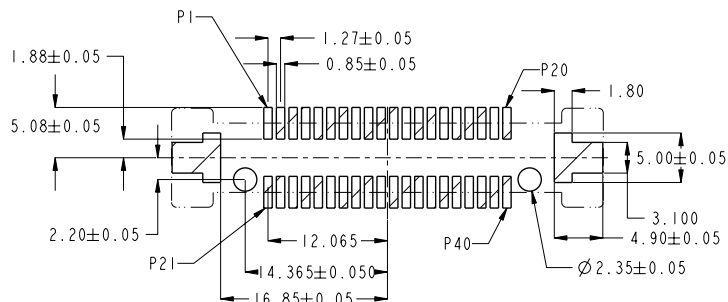
PRODUCT NO	REMARKS
10038339-001LF	WITHOUT PICK-UP CAP
10038339-001CLF	WITH PICK-UP CAP
10038339-002LF	WITHOUT PICK-UP CAP
10038339-002CLF	WITH PICK-UP CAP



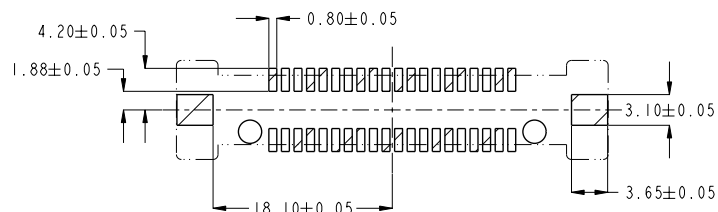
10038339-001LF / -002LF



10038339-001CLF / -002CLF



RECOMMENDED PCB LAYOUT FOR 10038339-001LF & -001CLF



RECOMMENDED PCB LAYOUT FOR 10038339-002LF & -002CLF

NOTES:

- MATERIAL :  
HOUSING : HIGH TEMPERATURE THERMOPLASTIC  
CONTACTS : COPPER ALLOY  
ESD CONTACTS : COPPER ALLOY
- PLATING :  
CONTACTS : 1.27um/50u" MIN NICKEL UNDERPLATE  
0.76um/30u" MIN GOLD AT CONTACT AREA  
2.54um/100u" MIN TIN AT SOLDER TAIL  
ESD CONTACTS : 1.27um/50u" MIN NICKEL UNDERPLATE  
2.54um/100u" MIN TIN AT OVERALL
- THE HOUSING WILL WITHSTAND EXPOSURE TO 260°C PEAK TEMPERATURE FOR 10 SECONDS IN A CONVECTION, INFRA-RED OR VAPOR PHASE REFLOW OVEN.
- THIS PRODUCT MEETS EUROPEAN UNION DIRECTIVES AND OTHER COUNTRY REGULATIONS AS DESCRIBED ON GS-22-008.

REV F - 2006-04-17

rev	ecm no	dr	date
A	S05-0136	TAY	2005-05-11
B	S05-0216	TAY	2005-08-01
C	S05-0275	TAY	2005-09-22
D	S07-0042	TAY	2007-02-07
E	S10-0071	TAY	2010-03-30
-	-	-	-
-	-	-	-

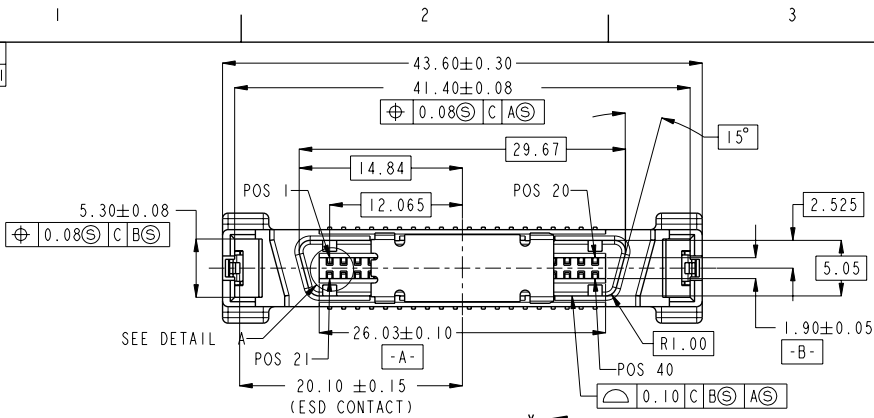
www.fciconnect.com		surface	ASME Y14.5	tolerance std	ASME Y14.5	projection	MM
Dr	KP TAY	2007-02-07	ANGULAR	0.x	±0.35	size	A4
Eng	KP TAY	2010-03-30	LINEAR	0.xx	±0.25	Scale	2:1
Chr	KP TAY	2010-03-30	0° ±2°	0.xxx	±0.13	ECN	S10-0071
Appr	JOEY NG	2010-03-30	Product family	Spec ref		-	
FCJ		SCA-2 & FIBER CHANNEL		part no	10038339		Rev.
RECEPT, SMT				customer	CUSTOMER		E
catalog no				sheet 1 of 2			

PDM: Rev:E

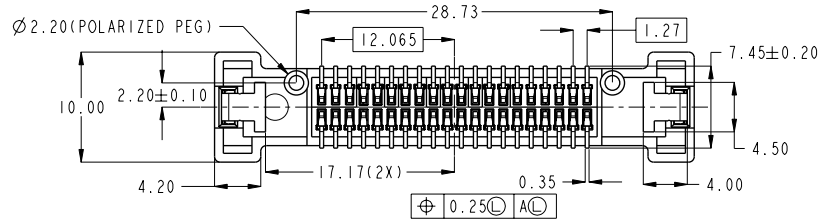
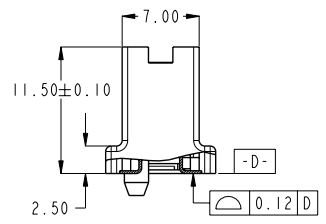
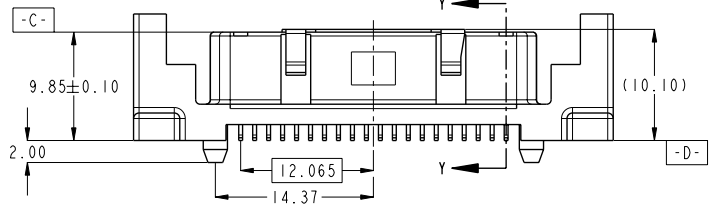
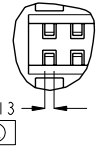
STATUS:Released

Printed: Dec 01, 2010

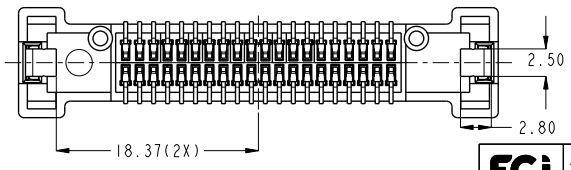
PRODUCT NO  
REFER TO PAGE 1



DETAIL A  
SCALE 4:1



10038339-001LF / -001CLF



10038339-002LF / -002CLF

	TITLE SCA-2 & FIBER CHANNEL RECEPT, SMT	DRWG NO 10038339	Rev. E
	CATALOG NO	CUSTOMER	SHEET 2 OF 2

REV F - 2008-04-17