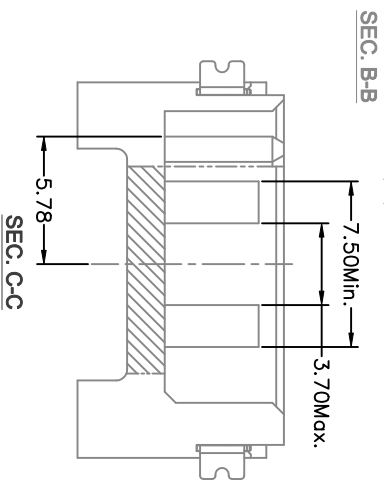
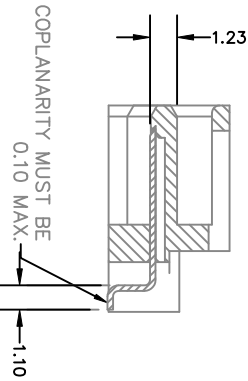
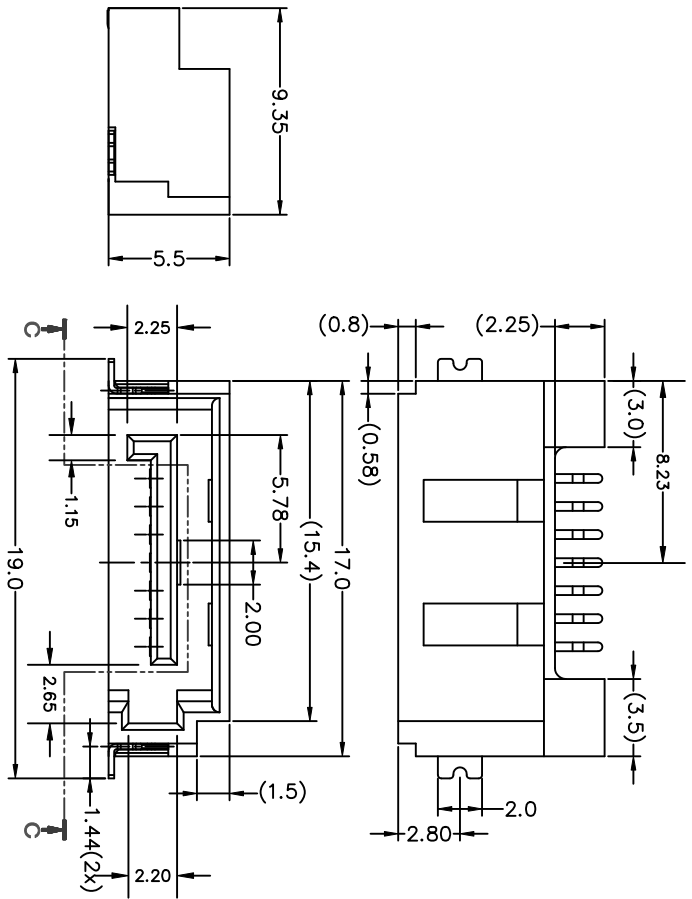
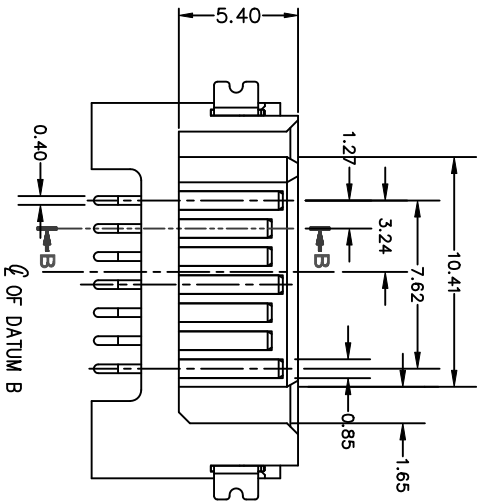


B

A



mat'l code		tolerances unless otherwise specified		CUSTOMER COPY		FCI		www.fciconnect.com	
itr	ecr no	dr	ddte	linear	projection	title	product family	code	
A	109-1051	S.LIN	04/10/09	.XX ± 0.25 .XXX ± 0.10 0° ± 2°	MM	S-ATA SIGNAL PLUG SMT RA TYPE ASSY	SATA	TWN	
				engr	scale	size	dwg no	sheet	
				chr	NA	A4	10096851	1 of	
				appd					
sheet	revision								
index	sheet	A	A						

1 | 2

1 | 2

3 |

4

ACAD

3 |

4

1 | 2

3 |

4

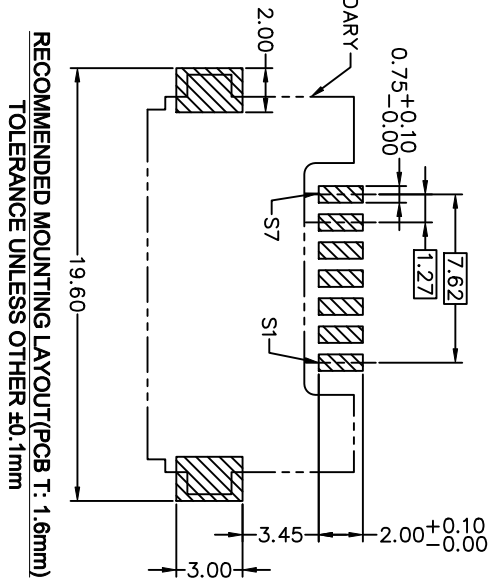
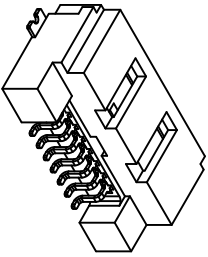
- NOTES :
1. MATERIAL
 - i) HOUSING : HIGH TEMPERATURE THERMOPLASTIC UL94V-0
 - ii) TERMINAL : COPPER ALLOY
 - iii) HOLD DOWN : COPPER ALLOY
 2. FINISH
 - i) TERMINAL : Au PLATING AT CONTACT POINT
 - ii) MATT TIN PLATING 100u" MIN AT SOLDER TAIL WITH NICKEL 50u" MIN UNDERPLATE.
 - iii) HOLD DOWN : MATT TIN PLATING.
 3. THE HOUSING WILL WITHSTAND EXPOSURE TO 260 DEGREE C PEAK TEMPERATURE FOR 10 SECONDS IN A CONVECTION, INFREARED, OR VAPOR PHASE REFLOW OVEN.
 4. Packaging spec. GS-14-840.
 5. Product Spec. GS-12-194.

10096851-0 X X X LF LEAD FREE

PRODUCT SPEC: BLANK - SEE NOTE 5

- 1: G/F PLATING AT CONTACT
- 2: 15U" GOLD AT CONTACT
- 3: 30U" GOLD AT CONTACT

0: T & R PACKING WITHOUT PICK UP CAP



mat'l code		tolerances unless otherwise specified		CUSTOMER COPY		FCI		title		code	
ltr	ecn no	dr	ddte	.X ± 0.38	projection	MM	product family	SA7A	size	dwg no	TWN
A	109-1051	S.LIN	04/10/09	.XX ± 0.25	STERLING LIN	04/10/09	SMT RA TYPE ASSY	A4	10096851	2 of	
				.XXX ± 0.10	engr	GARY HSIEH					
				0° ± 2°	chr	JOSEPH HSA					
					appr						
sheet	revision	A	A		scale	NA					
index	sheet	1	2								

1 | 2

AC.A11

3 |

4