

# Board to Board Connectors CHAMP 050 Series Connectors—Series I For Board to Board Connection

## Receptacle Header for Vertical Mount Type With Retention Leg

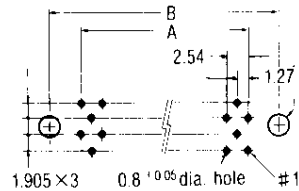
### Material and Finish:

Contacts—Phosphor bronze, duplex plated gold (see table) on contact area,  $1\mu\text{m}$  min. tin-lead or tin on post area, with entire contact underplated  $1\mu\text{m}$  min. nickel  
Housing—UL94V-0 rated, glass-filled 6/6 nylon, black  
Retention Leg—Brass,  $2\mu\text{m}$  min. tin-lead or tin over  $1.3\mu\text{m}$  min. underplated nickel

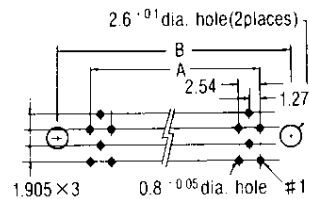
### PC Board Layout

(Required for solder resist on surface of PC board)

(Connector mount side)  
 $2.6^{+0.1}$  dia. hole (2 places)

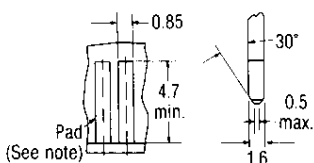
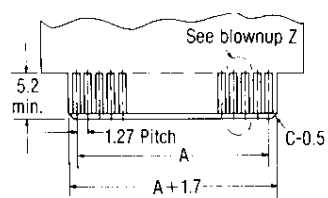


**20, 40, 60, 68, 80, 100 and 120 Positions**



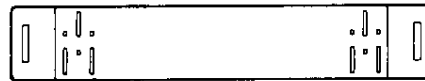
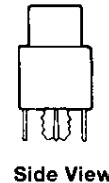
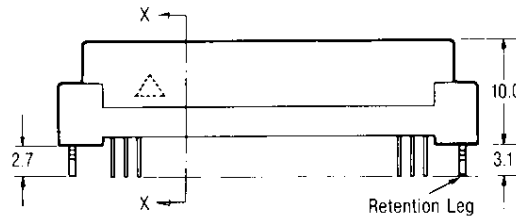
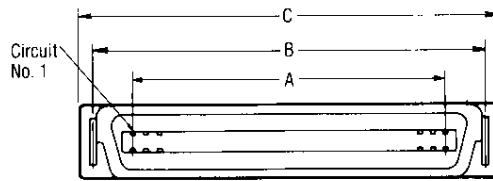
**30, 50, 130 Positions**

### PC Board Edge Mounting Dimension

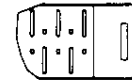


**Blowup Z Side View**

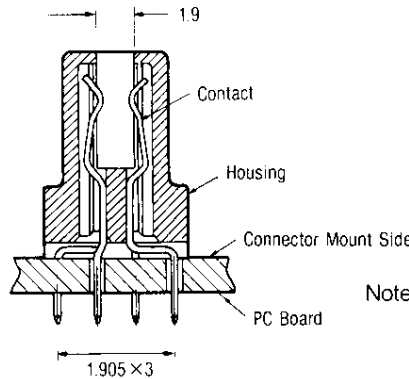
Note: Gold plated  $1.5\mu\text{m}$  min. with underplated nickel.



**30, 50, 130 Pos.**



**20, 40, 60, 68, 80, 100, 120 Pos.**



**Section X-X**

Note: For details on 140-through 200-position assemblies, or when requiring heat resistant material, see our catalog 82244.

No. of Pos.	Dimensions			Part Number		
	A	B	C	0.2 $\mu\text{m}$ thk. gold plated	0.5 $\mu\text{m}$ thk. gold plated	0.76 $\mu\text{m}$ thk. gold plated
20	11.43	21.40	24.1	<b>175475-1</b>	<b>3-175475-1</b>	<b>5-175475-1</b>
30	17.78	27.75	30.4	<b>175475-3</b>	<b>3-175475-3</b>	<b>5-175475-3</b>
40	24.13	34.10	36.8	<b>175475-5</b>	<b>3-175475-5</b>	<b>5-175475-5</b>
50	30.48	40.45	43.1	<b>175475-6</b>	<b>3-175475-6</b>	<b>5-175475-6</b>
60	36.83	46.80	49.5	<b>175475-7</b>	<b>3-175475-7</b>	<b>5-175475-7</b>
68	41.91	51.88	54.5	<b>175475-8</b>	<b>3-175475-8</b>	<b>5-175475-8</b>
80	49.53	59.50	62.2	<b>175475-9</b>	<b>3-175475-9</b>	<b>5-175475-9</b>
100	62.23	72.20	74.9	<b>1-175475-0</b>	<b>4-175475-0</b>	<b>6-175475-0</b>
120	74.93	84.90	87.6	<b>1-175475-1</b>	<b>4-175475-1</b>	<b>6-175475-1</b>
130	81.28	91.25	93.9	<b>1-175475-2</b>	<b>4-175475-2</b>	<b>6-175475-2</b>