

DWG. NO. SD-52409-006

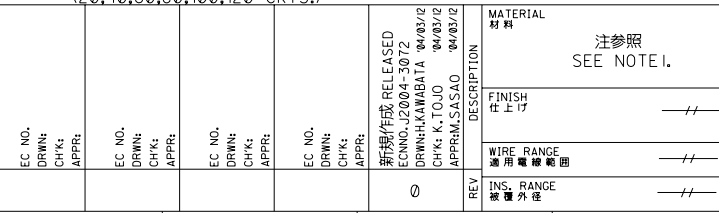
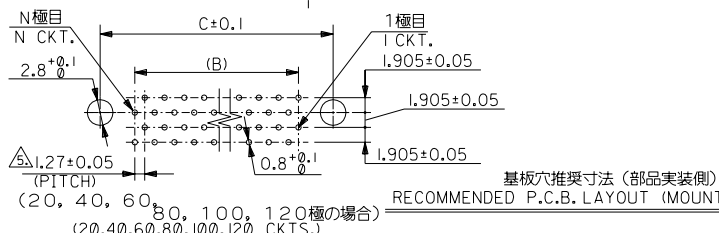
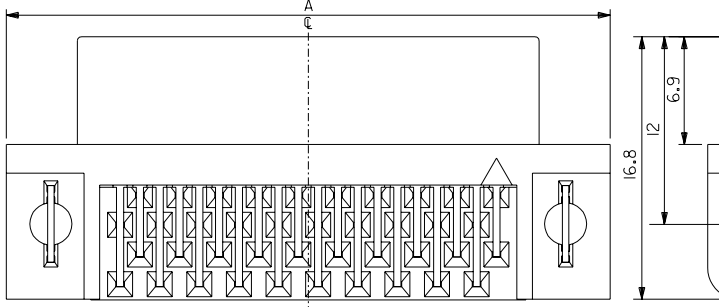
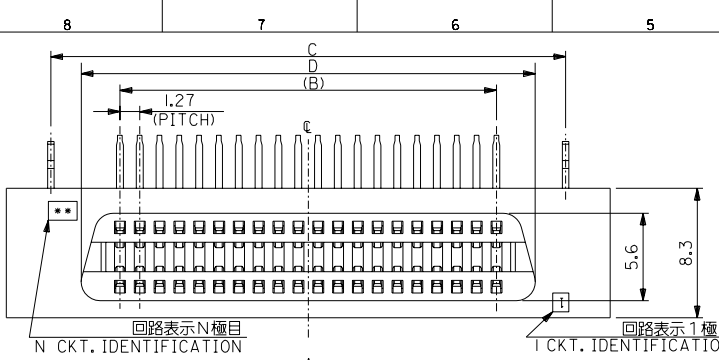
F

D

C

B

DO NOT SCALE DRAWING



- 注) 1. 材質 MATERIAL  
 HOUSING : GLASS FILLED POLYESTER, UL94V-0, COLOR:BLACK  
 TERMINAL : PHOSPHOR BRONZE  
 金属ペグ : PHOSPHOR BRONZE
2. メッキ仕様 PLATING  
 接点部金メッキ : 0.1 MICROMETER MIN.  
 CONTACT AREA : GOLD 0.1 MICROMETER MIN.  
 半田付け部 : 錫メッキ 1.0 MICROMETER MIN.  
 SOLDER AREA : TIN 1.0 MICROMETER MIN.  
 下地メッキ : ニッケルメッキ 1.0 MICROMETER MIN.  
 UNDER-PLATE : NICKEL 1.0 MICROMETER MIN.
3. 推奨基板厚 : ±1.6±0.05  
 RECOMMENDED P.C.B. THICKNESS : ±1.6±0.05
4. 嵌合相手 : 52340, 52411, 52327, 52412 シリーズ  
 TO MATE WITH MOLEX : 52340, 52411, 52327, 52412 SERIES.
- △ 公差非累積 TOLERANCE NOT TO BE CUMULATIVE
6. 金属ペグ無しの製品は、52410-\*\*\*1  
 52410-\*\*\*1: PRODUCT WITHOUT METAL PEG
7. 本製品は 52409-\*\*01 の鉛フリー品である。  
 THIS PRODUCT IS LEAD FREE OF 52409-\*\*01.

79.90	83.82	74.93	89.50	52409-1271	120
67.20	71.12	62.23	76.80	-1071	100
54.50	58.42	49.53	64.10	-0871	80
41.80	45.72	36.83	51.40	-0671	60
35.45	39.37	30.48	45.05	-0571	50
29.10	33.02	24.13	38.70	-0471	40
22.75	26.67	17.78	32.35	-0371	30
16.40	20.32	11.43	26.00	52409-0271	20

MODEL NO. 52409-**71		DIMENSIONS:		SHT	REV
GENERAL TOLERANCES: (UNLESS SPECIFIED)		SCALE		DESIGN UNITS	
10 UNDER 未滿		—		mm □ INCH	
10 OVER 以上		+0.2		THIRD ANGLE PROJECTION	
30 UNDER 未滿		+0.25		□ mm □ INCH □ mm ONLY	
30 OVER 以上		+0.3		REVISE ON CAD ONLY	
ANGLE 角度		+3°		TITLE:	
CAD FILENAME		MATERIAL NO.		DRAWING NO.	
SD-52409-006.S01		SEE CHART		SD-52409-006	
THIS DRAWING CONTAINS INFORMATION THAT IS PROPRIETARY TO MOLEX INCORPORATED AND SHOULD NOT BE USED WITHOUT WRITTEN PERMISSION.		SHEET NO.		SIZE	
		1 OF 1		B	

EC NO.	DRWN:	CHK:	APPR:
EC NO.	DRWN:	CHK:	APPR:
EC NO.	DRWN:	CHK:	APPR:
EC NO.	DRWN:	CHK:	APPR:
0			

注参照 SEE NOTE I.

FINISH 仕上げ //

WIRE RANGE 適用電線範囲 //

INS. RANGE 被覆外径 //

新製/作成/RELEASED  
 ECNO. J2004-3072  
 DRWN: H. KAWABATA '04/03/12  
 CHK: K. TOJO '04/03/12  
 APPR: M. SASAO '04/03/12

基板穴推奨寸法 (部品実装側)  
 RECOMMENDED P.C.B. LAYOUT (MOUNTING SIDE)

(30, 50 極の場合)  
 (30, 50 CKTS.)

(20, 40, 60, 80, 100, 120 極の場合)  
 (20, 40, 60, 80, 100, 120 CKTS.)

EN-02J(097) MXJ-54